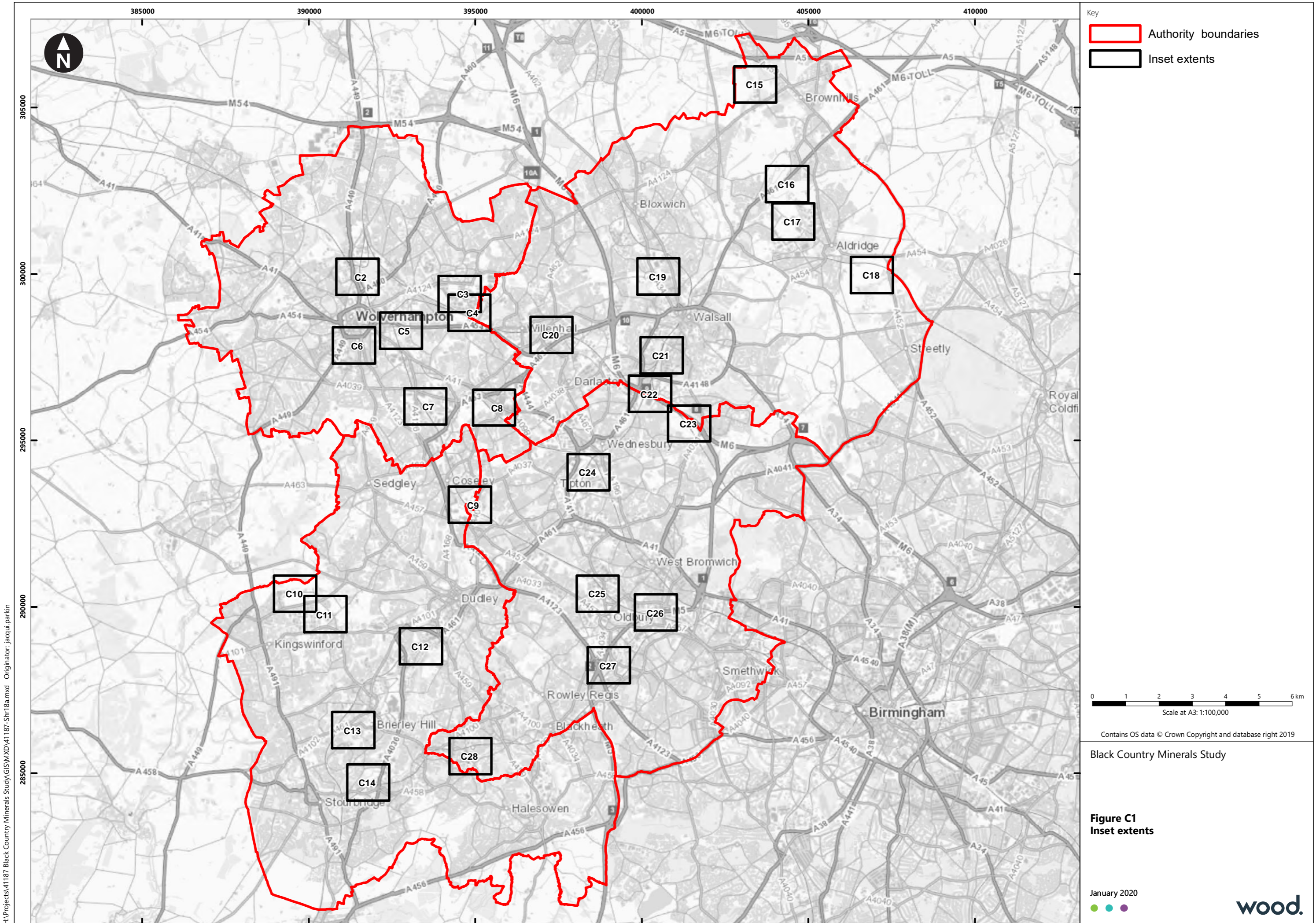




Appendix C

Supporting Figures





Key
 Authority boundaries
 Inset extents

0 1 2 3 4 5 6 km
 Scale at A3: 1:100,000

Contains OS data © Crown Copyright and database right 2019

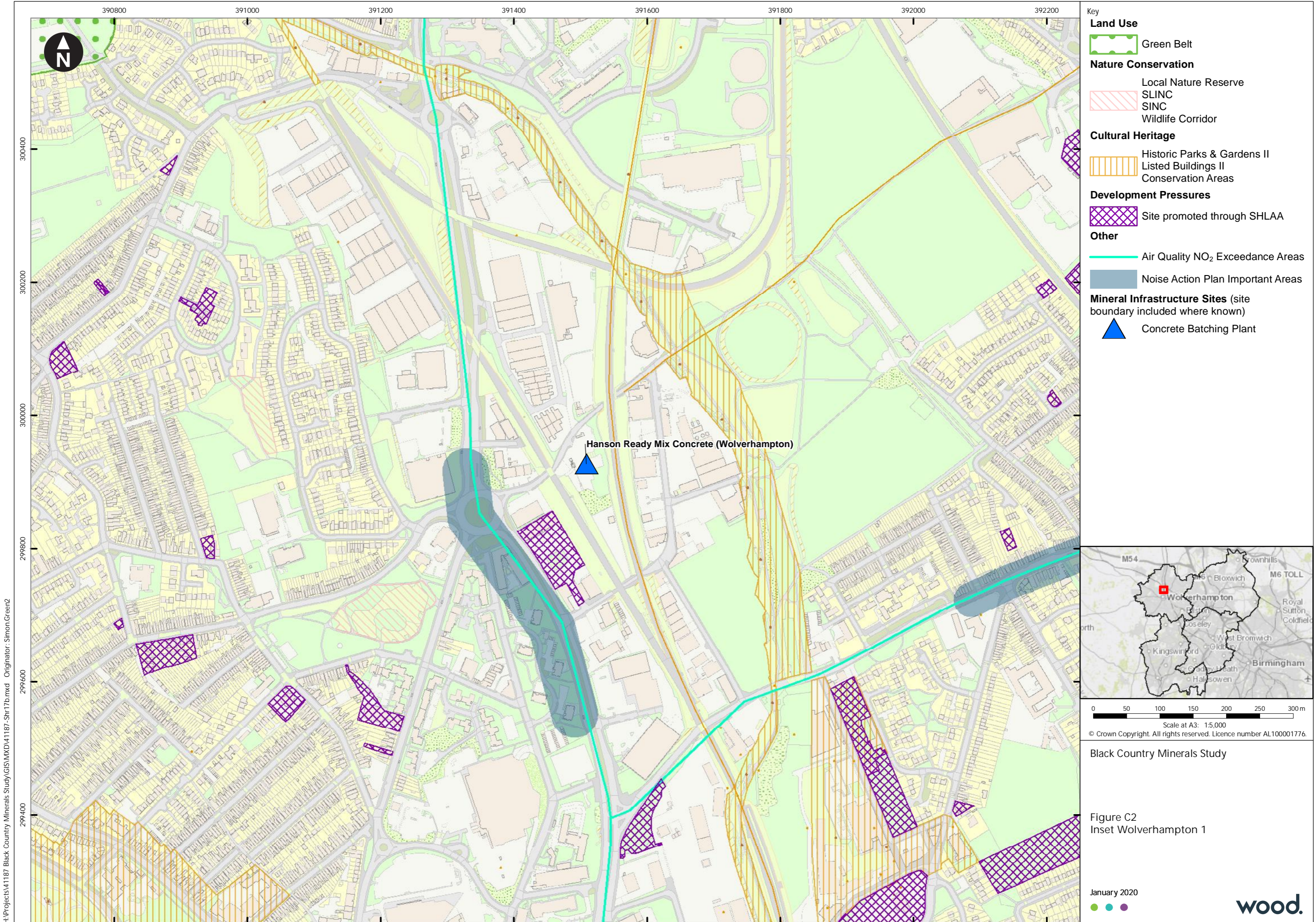
Black Country Minerals Study

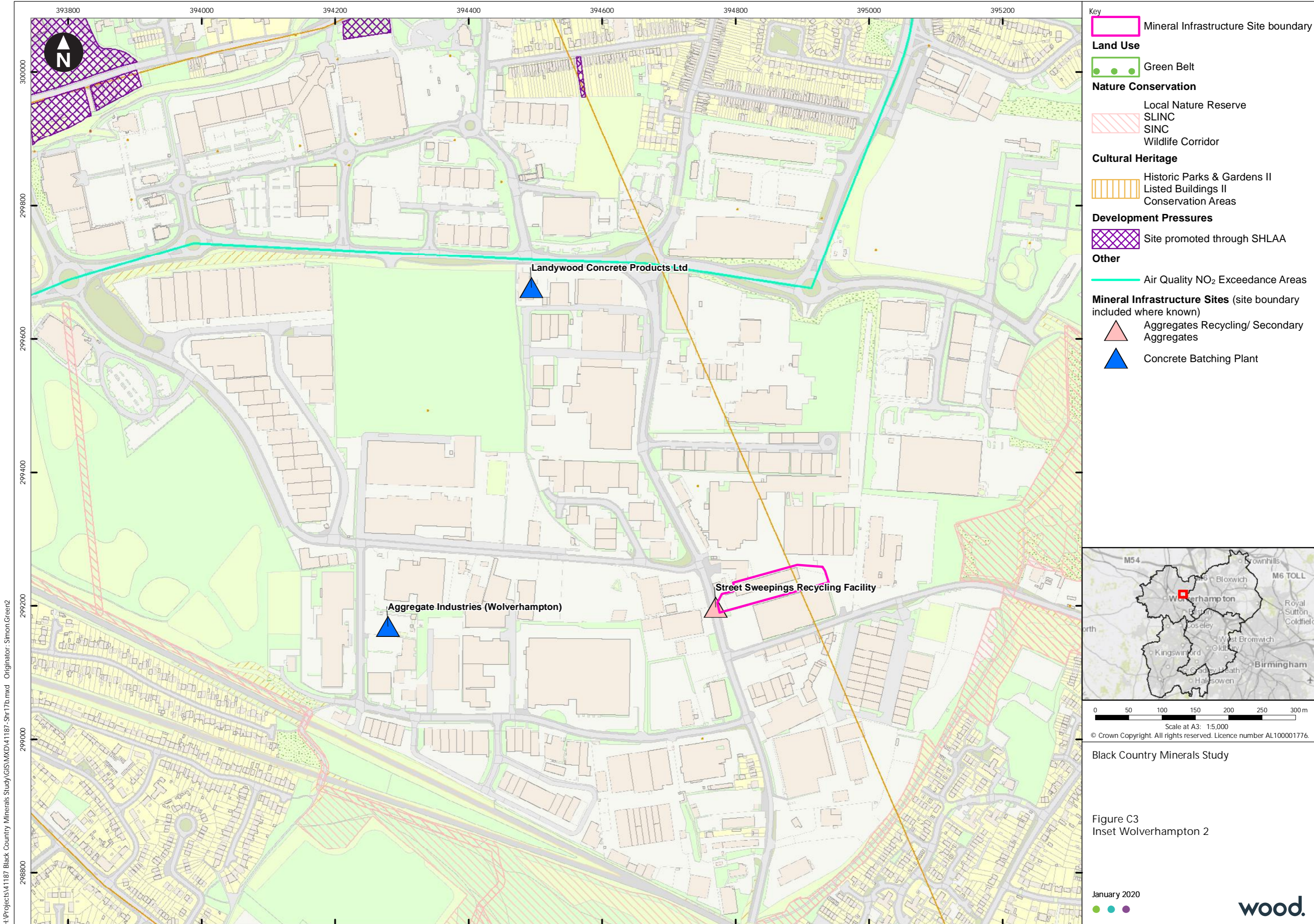
Figure C1
Inset extents

January 2020



H:\Projects\41187 Black Country Minerals Study\GIS\MXD\41187_Shr18a.mxd Originator: jacqui.parkin





- Key**
- Mineral Infrastructure Site boundary
 - Land Use**
 - Green Belt
 - Nature Conservation**
 - Local Nature Reserve
 - SLINC
 - SINC
 - Wildlife Corridor
 - Cultural Heritage**
 - Historic Parks & Gardens II
 - Listed Buildings II
 - Conservation Areas
 - Development Pressures**
 - Site promoted through SHLAA
 - Other**
 - Air Quality NO₂ Exceedance Areas
 - Mineral Infrastructure Sites (site boundary included where known)**
 - Aggregates Recycling/ Secondary Aggregates
 - Concrete Batching Plant

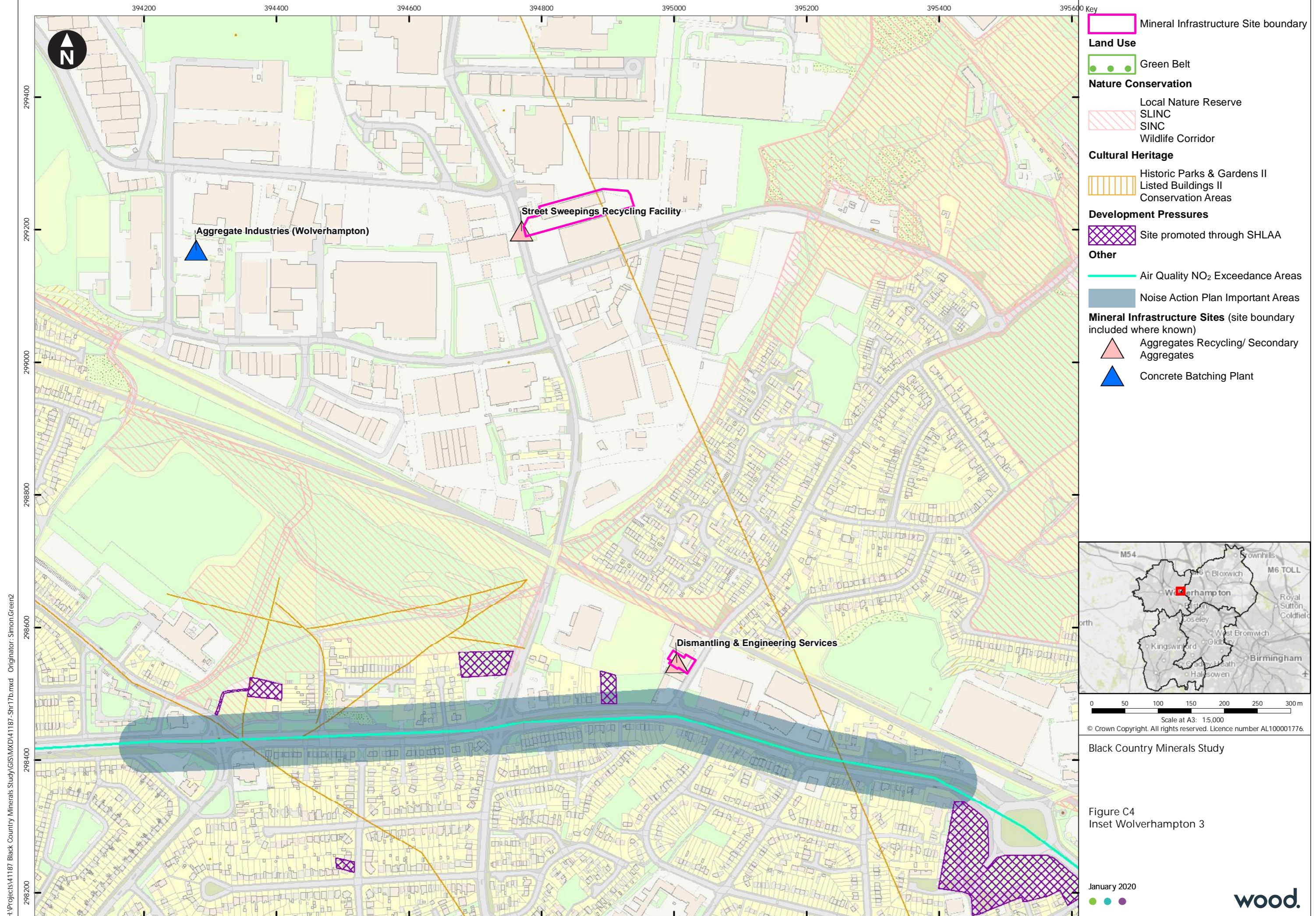


0 50 100 150 200 250 300m
 Scale at A3: 1:5,000
 © Crown Copyright. All rights reserved. Licence number AL100001776.

Black Country Minerals Study

Figure C3
 Inset Wolverhampton 2

H:\Projects\1187 Black Country Minerals Study\GIS\MXD\1187_Shr17b.mxd Originator: Simon Green2



H:\Projects\1187 Black Country Minerals Study\GIS\MXD\1187_Shr17b.mxd Originator: Simon.Green2



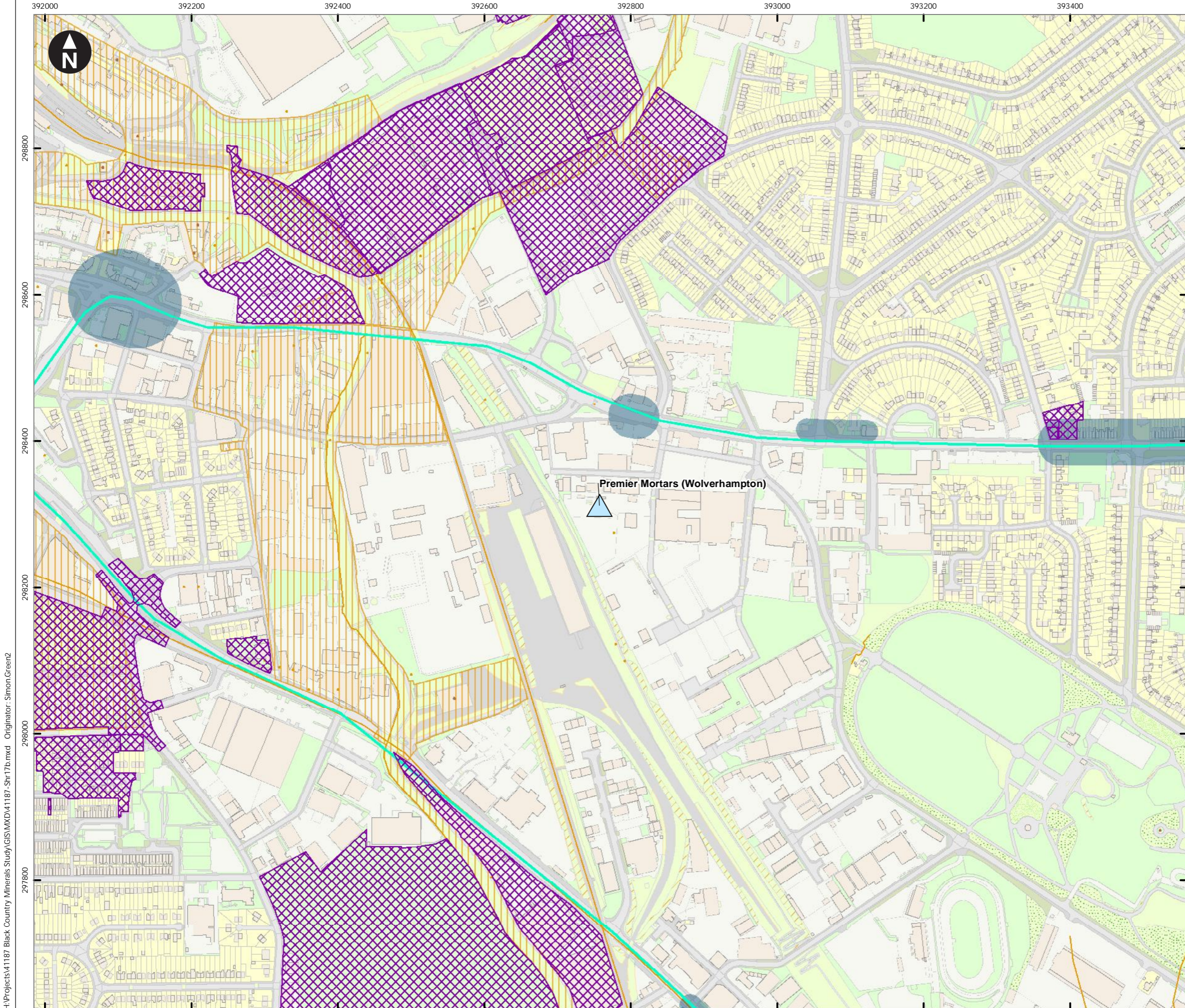
0 50 100 150 200 250 300m
Scale at A3: 1:5,000
© Crown Copyright. All rights reserved. Licence number AL100001776.

Black Country Minerals Study

Figure C4
Inset Wolverhampton 3

January 2020





Key

Land Use

- Green Belt

Nature Conservation

- Local Nature Reserve
- SLINC
- SINC
- Wildlife Corridor

Cultural Heritage

- Historic Parks & Gardens II
- Listed Buildings II
- Conservation Areas

Development Pressures

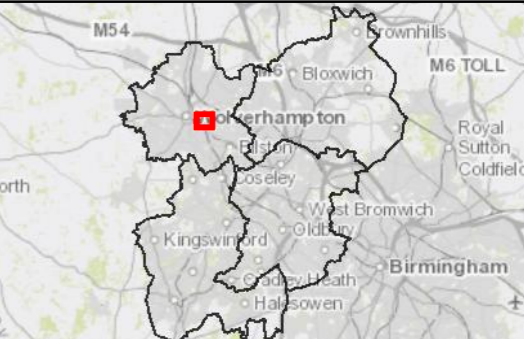
- Site promoted through SHLAA

Other

- Air Quality NO₂ Exceedance Areas
- Noise Action Plan Important Areas

Mineral Infrastructure Sites (site boundary included where known)

- Dry Silo Mortar Plant

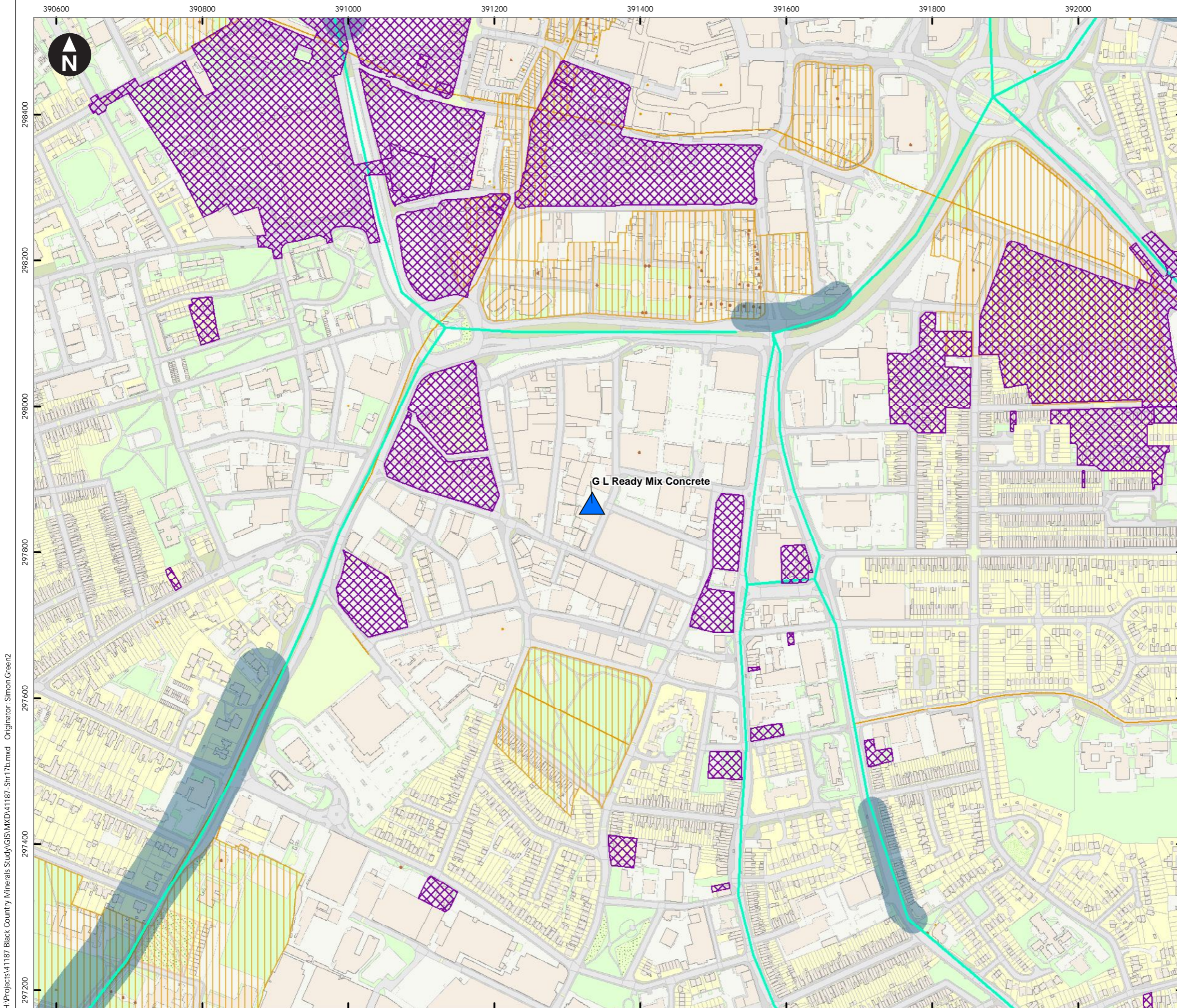


0 50 100 150 200 250 300m
 Scale at A3: 1:5,000
 © Crown Copyright. All rights reserved. Licence number AL100001776.

Black Country Minerals Study

Figure C5
 Inset Wolverhampton 4

H:\Projects\41187 Black Country Minerals Study\GIS\MXD\41187_Shr17b.mxd Originator: Simon.Green2



Key

Land Use

- Green Belt

Nature Conservation

- Local Nature Reserve
- SLINC
- SINC
- Wildlife Corridor

Cultural Heritage

- Historic Parks & Gardens II
- Listed Buildings II
- Conservation Areas

Development Pressures

- Site promoted through SHLAA

Other

- Air Quality NO₂ Exceedance Areas
- Noise Action Plan Important Areas

Mineral Infrastructure Sites (site boundary included where known)

- Concrete Batching Plant

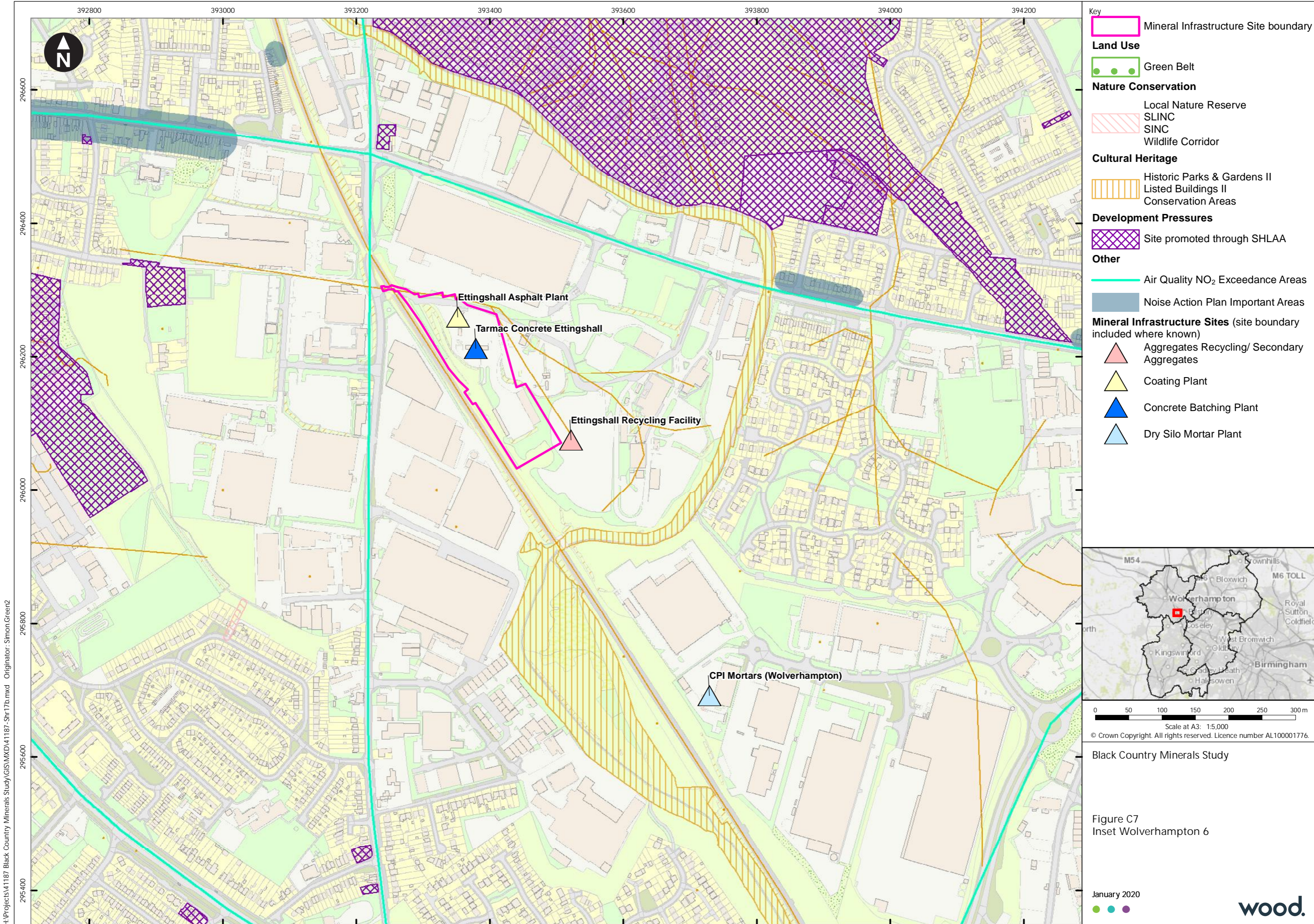


0 50 100 150 200 250 300m
 Scale at A3: 1:5,000
 © Crown Copyright. All rights reserved. Licence number AL100001776.

Black Country Minerals Study

Figure C6
 Inset Wolverhampton 5

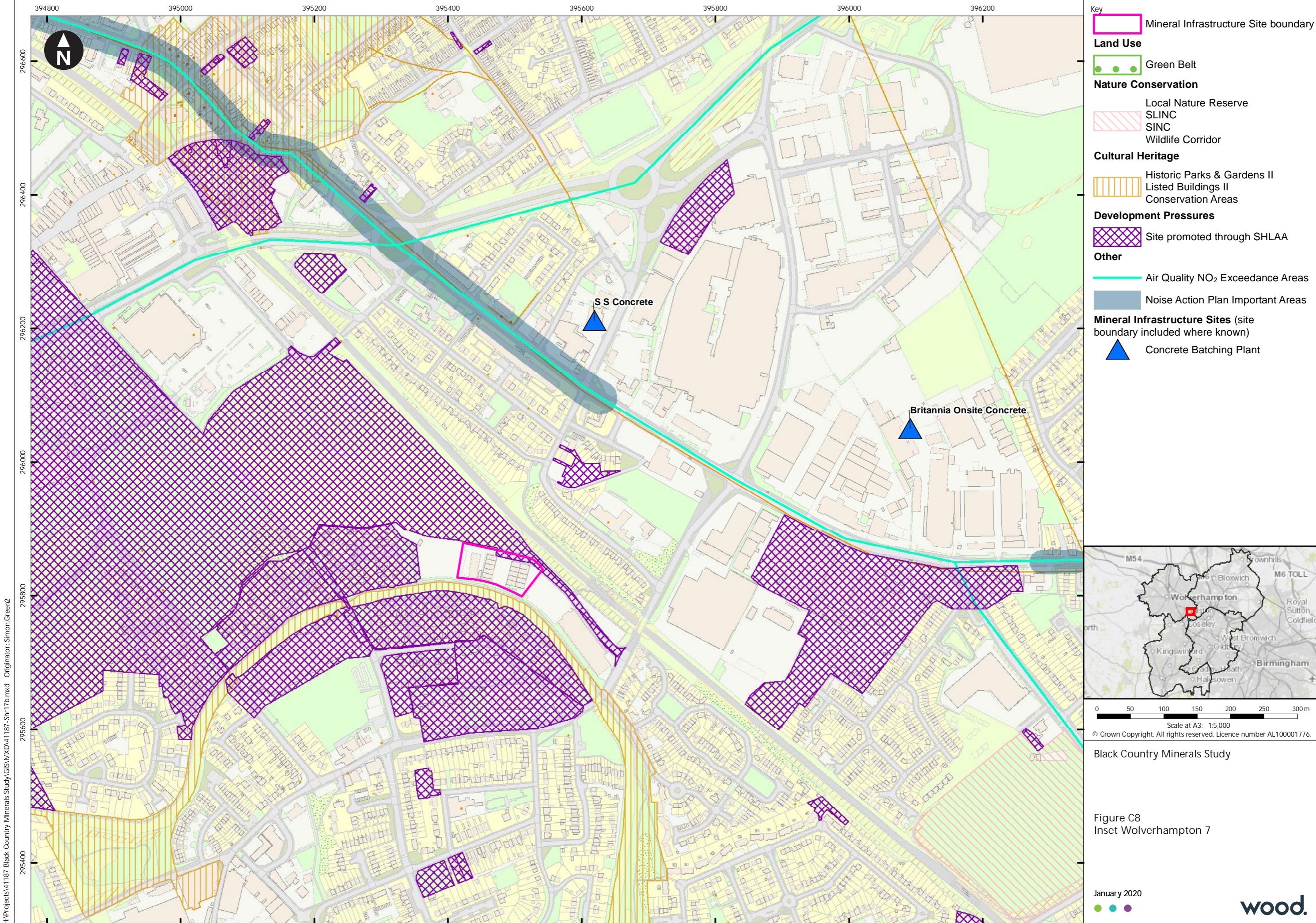
H:\Projects\41187 Black Country Minerals Study\GIS\MXD\41187_Shr17b.mxd Originator: Simon.Green2



H:\Projects\41187 Black Country Minerals Study\GIS\MXD\41187_Shr17b.mxd Originator: Simon Green2



0 50 100 150 200 250 300m
Scale at A3: 1:5,000
© Crown Copyright. All rights reserved. Licence number AL100001776.



- Key**
- Mineral Infrastructure Site boundary
 - Land Use**
 - Green Belt
 - Nature Conservation**
 - Local Nature Reserve
 - SLINC
 - SINC
 - Wildlife Corridor
 - Cultural Heritage**
 - Historic Parks & Gardens II
 - Listed Buildings II
 - Conservation Areas
 - Development Pressures**
 - Site promoted through SHLAA
 - Other**
 - Air Quality NO₂ Exceedance Areas
 - Noise Action Plan Important Areas
 - Mineral Infrastructure Sites (site boundary included where known)**
 - ▲ Concrete Batching Plant

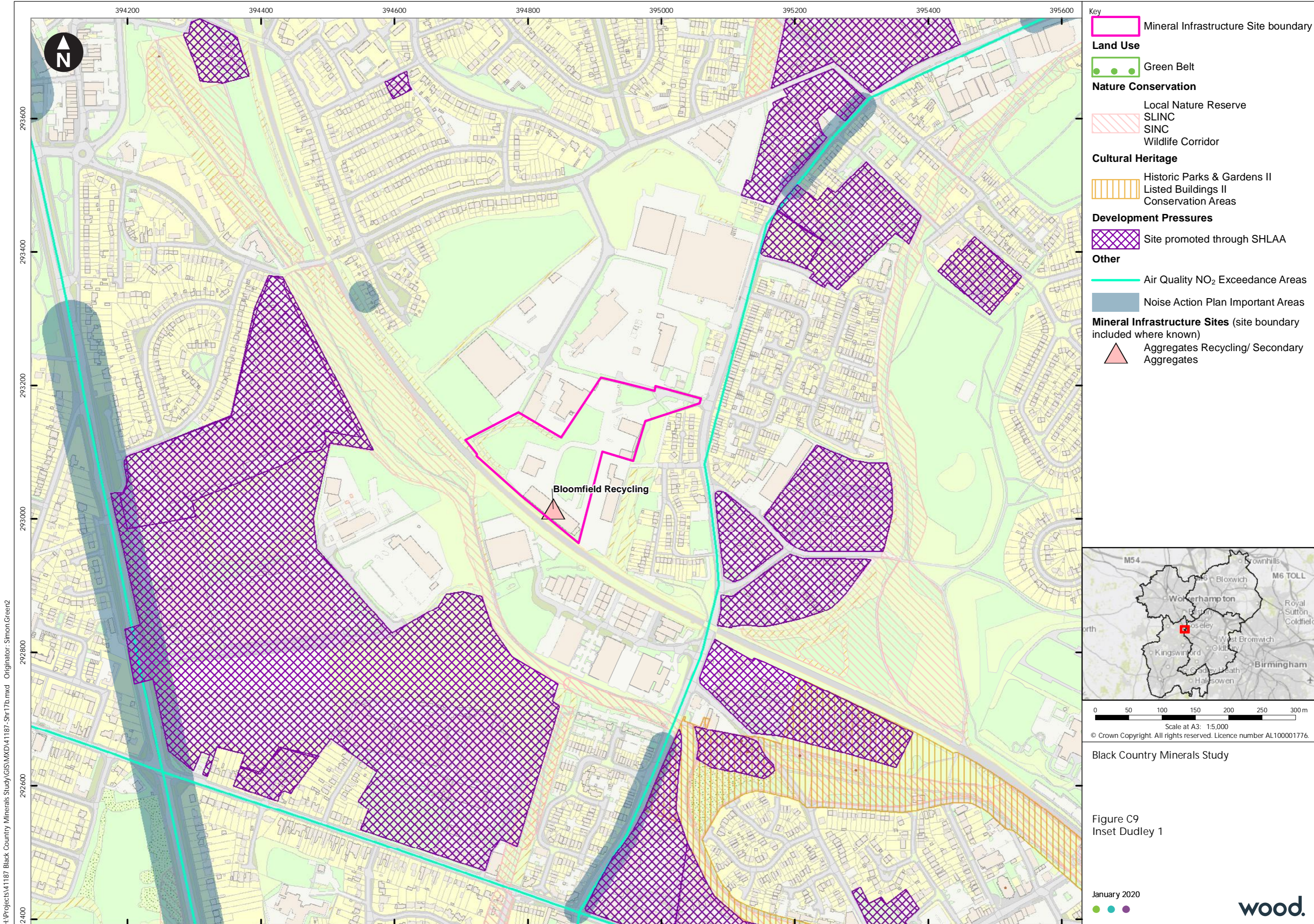


0 50 100 150 200 250 300m
 Scale at A3: 1:5,000
 © Crown Copyright. All rights reserved. Licence number AL100001776.

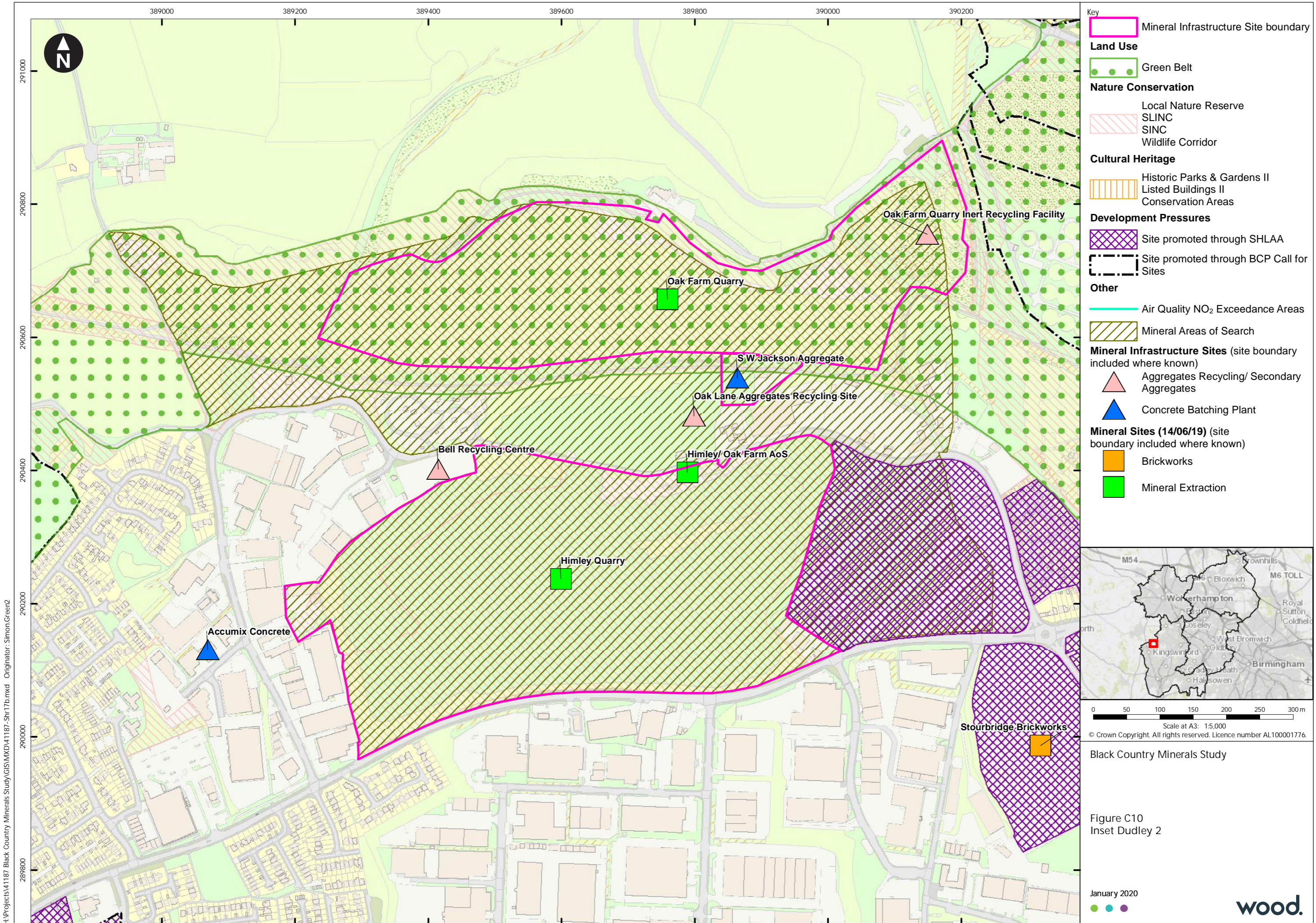
Black Country Minerals Study

Figure C8
 Inset Wolverhampton 7

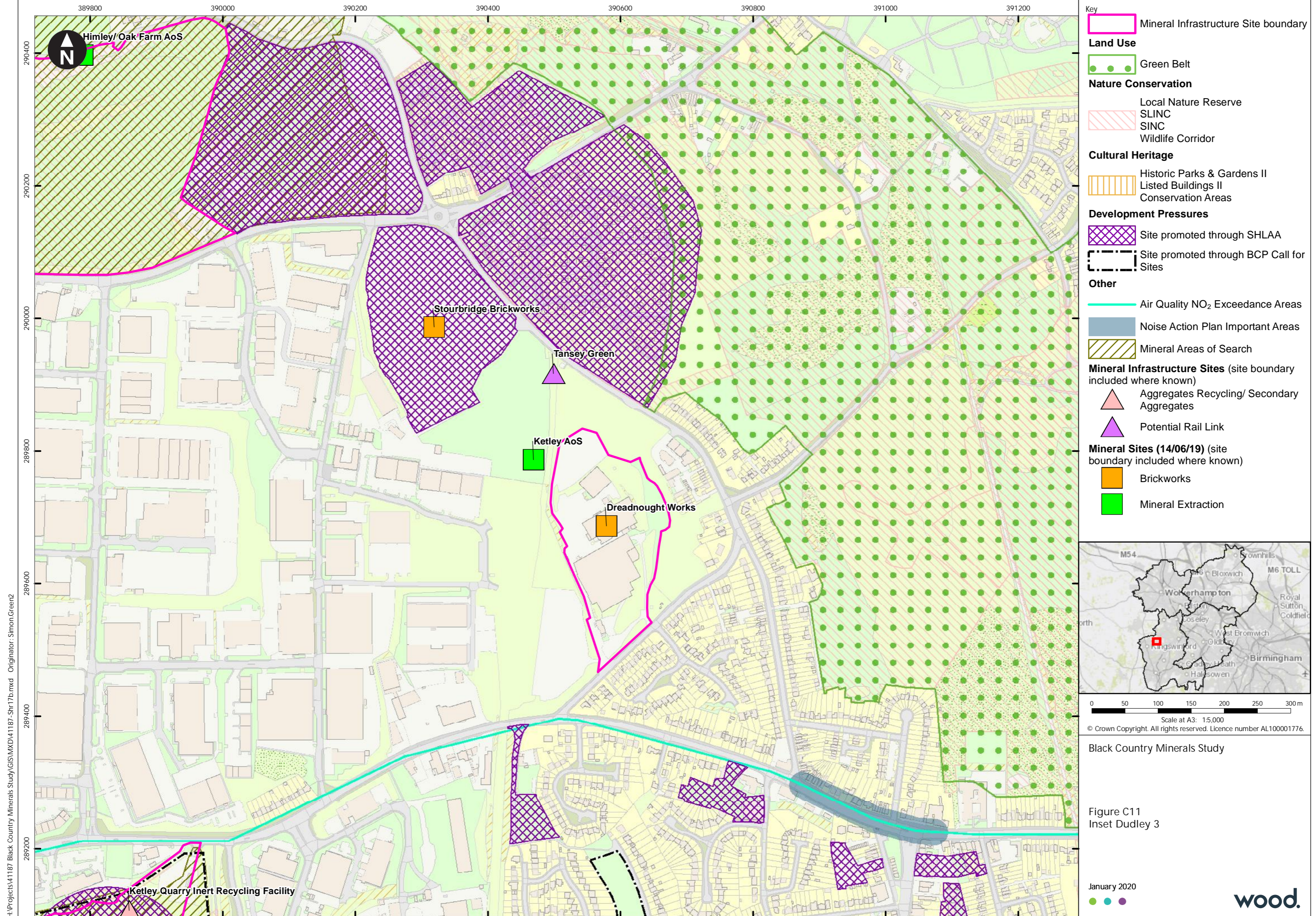
H:\Projects\41187 - Black Country Minerals Study\GIS\MXD\41187_Shr17b.mxd Originator: Simon Green2



H:\Projects\41187 - Black Country Minerals Study\GIS\MXD\41187_Shr17b.mxd Originator: Simon Green2



H:\Projects\41187 Black Country Minerals Study\GIS\MXD\41187_Shr17b.mxd Originator: Simon Green2



Key

- Mineral Infrastructure Site boundary

Land Use

- Green Belt

Nature Conservation

- Local Nature Reserve
- SLINC
- SINC
- Wildlife Corridor

Cultural Heritage

- Historic Parks & Gardens II
- Listed Buildings II
- Conservation Areas

Development Pressures

- Site promoted through SHLAA
- Site promoted through BCP Call for Sites

Other

- Air Quality NO₂ Exceedance Areas
- Noise Action Plan Important Areas
- Mineral Areas of Search

Mineral Infrastructure Sites (site boundary included where known)

- Aggregates Recycling/ Secondary Aggregates
- Potential Rail Link

Mineral Sites (14/06/19) (site boundary included where known)

- Brickworks
- Mineral Extraction

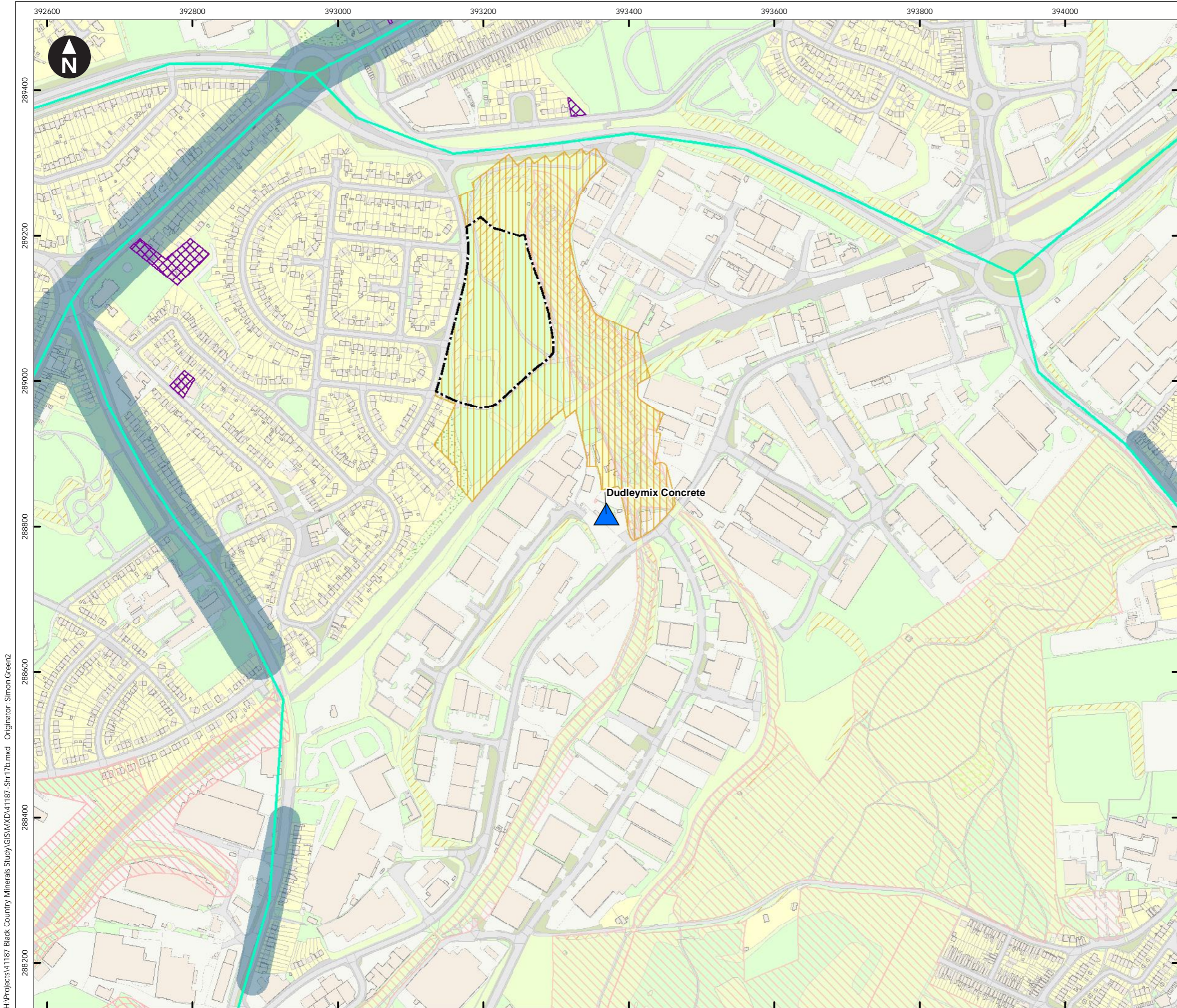


0 50 100 150 200 250 300m
 Scale at A3: 1:5,000
 © Crown Copyright. All rights reserved. Licence number AL100001776.

Black Country Minerals Study

Figure C11
 Inset Dudley 3

H:\Projects\41187 Black Country Minerals Study\GIS\MXD\41187_Shr17b.mxd Originator: Simon.Green2



Key

Land Use

- Green Belt

Nature Conservation

- Local Nature Reserve
- SLINC
- SINC
- Wildlife Corridor

Cultural Heritage

- Historic Parks & Gardens II
- Listed Buildings II
- Conservation Areas

Development Pressures

- Site promoted through SHLAA
- Site promoted through BCP Call for Sites

Other

- Air Quality NO₂ Exceedance Areas
- Noise Action Plan Important Areas

Mineral Infrastructure Sites (site boundary included where known)

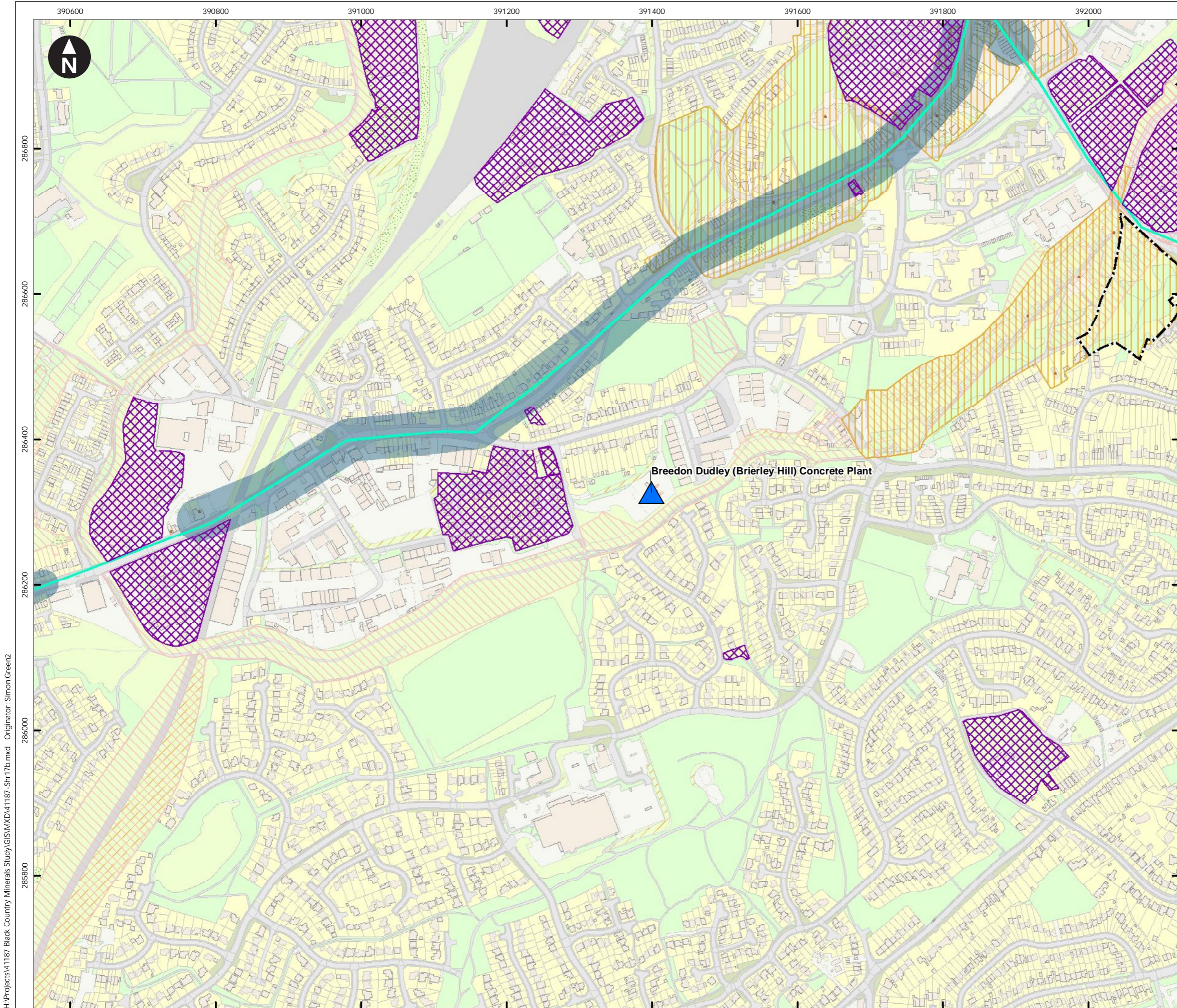
- Concrete Batching Plant



0 50 100 150 200 250 300m
 Scale at A3: 1:5,000
 © Crown Copyright. All rights reserved. Licence number AL100001776.

Black Country Minerals Study

Figure C12
 Inset Dudley 4



Key

Land Use

- Green Belt

Nature Conservation

- Local Nature Reserve
- SLINC
- SINC
- Wildlife Corridor

Cultural Heritage

- Historic Parks & Gardens II
- Listed Buildings II
- Conservation Areas

Development Pressures

- Site promoted through SHLAA
- Site promoted through BCP Call for Sites

Other

- Air Quality NO₂ Exceedance Areas
- Noise Action Plan Important Areas

Mineral Infrastructure Sites (site boundary included where known)

- Concrete Batching Plant

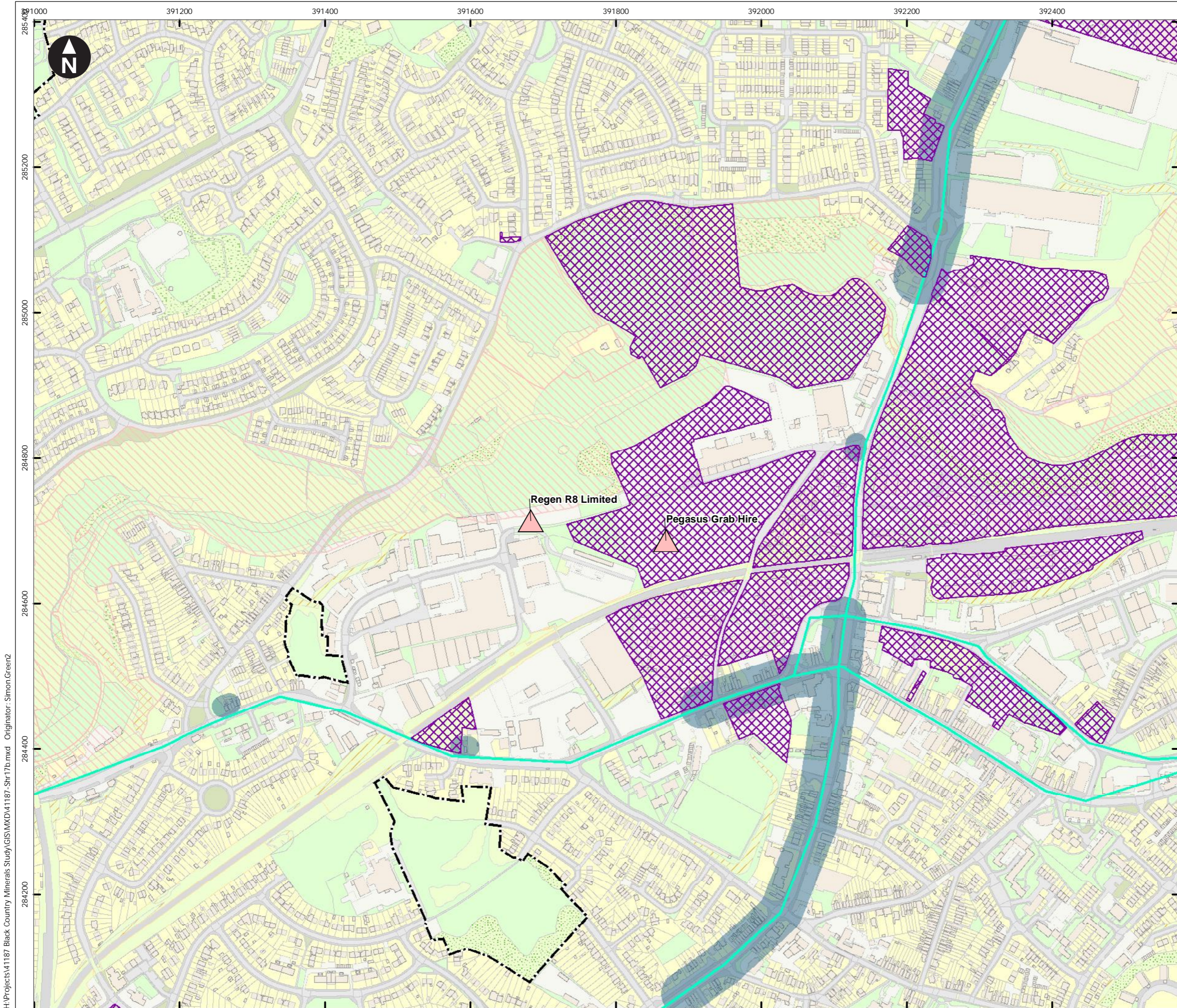
Breedon Dudley (Brierley Hill) Concrete Plant



0 50 100 150 200 250 300m
 Scale at A3: 1:5,000
 © Crown Copyright. All rights reserved. Licence number AL100001776.

Black Country Minerals Study

Figure C13
 Inset Dudley 5



Key

Land Use

- Green Belt

Nature Conservation

- Local Nature Reserve
- SLINC
- SINC
- Wildlife Corridor

Cultural Heritage

- Historic Parks & Gardens II
- Listed Buildings II
- Conservation Areas

Development Pressures

- Site promoted through SHLAA
- Site promoted through BCP Call for Sites

Other

- Air Quality NO₂ Exceedance Areas
- Noise Action Plan Important Areas

Mineral Infrastructure Sites (site boundary included where known)

- Aggregates Recycling/ Secondary Aggregates



0 50 100 150 200 250 300m
 Scale at A3: 1:5,000
 © Crown Copyright. All rights reserved. Licence number AL100001776.

Black Country Minerals Study

Figure C14
 Inset Dudley 6

wood.

