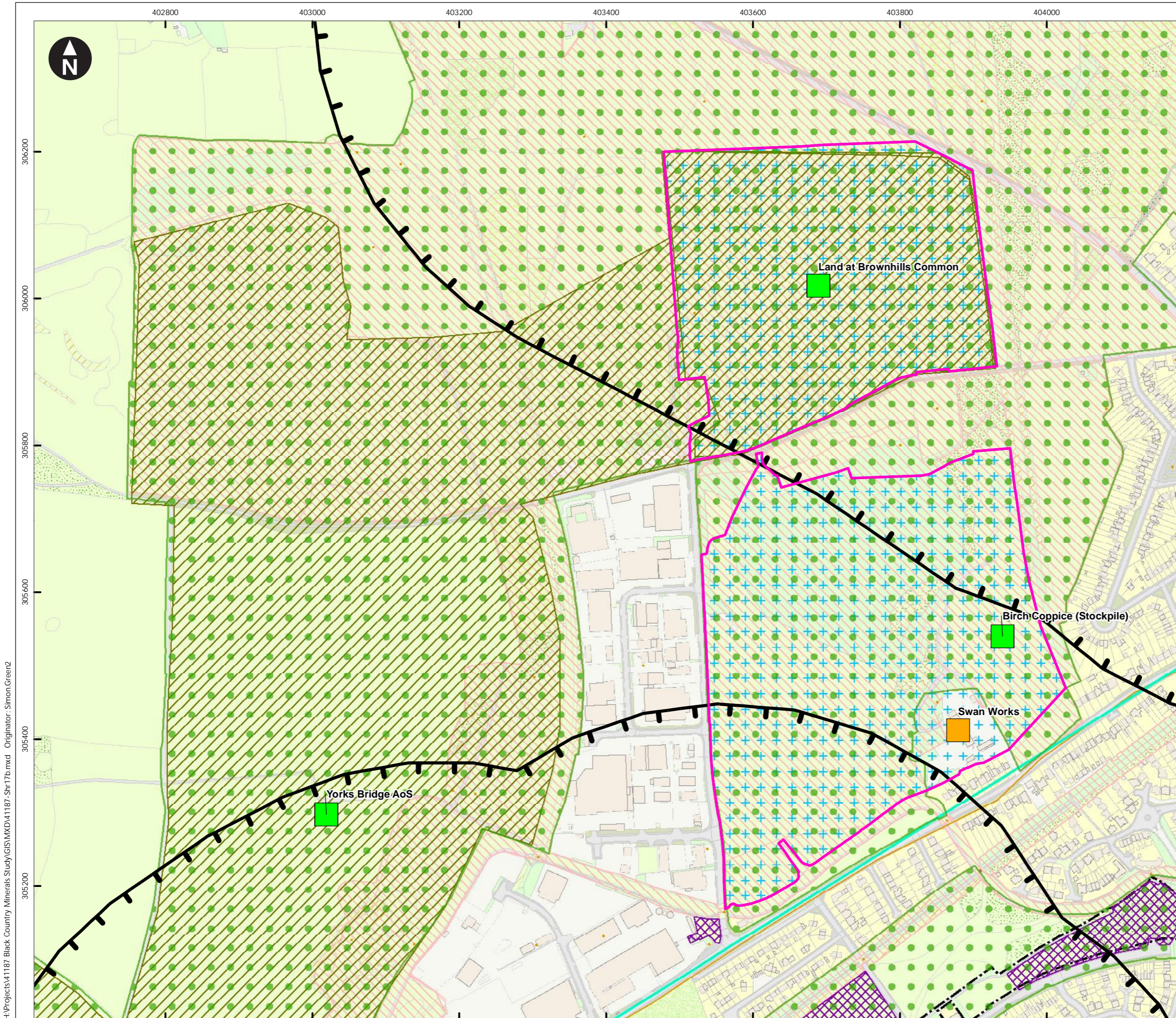




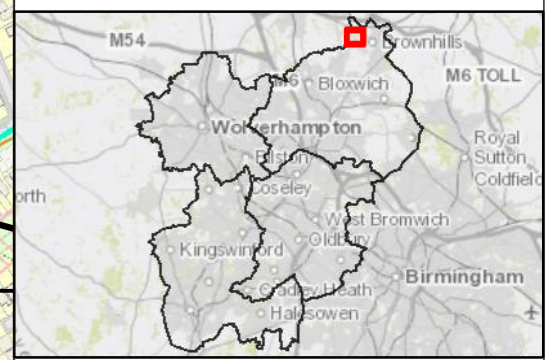
Appendix C

Supporting Figures





- Key**
- Mineral Infrastructure Site boundary
 - Land Use**
 - Green Belt
 - Nature Conservation**
 - Local Nature Reserve
 - SLINC
 - SINC
 - Wildlife Corridor
 - SSSI Impact Risk Zone
 - Cultural Heritage**
 - Historic Parks & Gardens II
 - Listed Buildings II
 - Conservation Areas
 - Development Pressures**
 - Site promoted through SHLAA
 - Site promoted through BCP Call for Sites
 - Other**
 - Air Quality NO₂ Exceedance Areas
 - Mineral Areas of Search
 - Permitted Mineral Sites
 - Mineral Sites (14/06/19)** (site boundary included where known)
 - Brickworks
 - Mineral Extraction

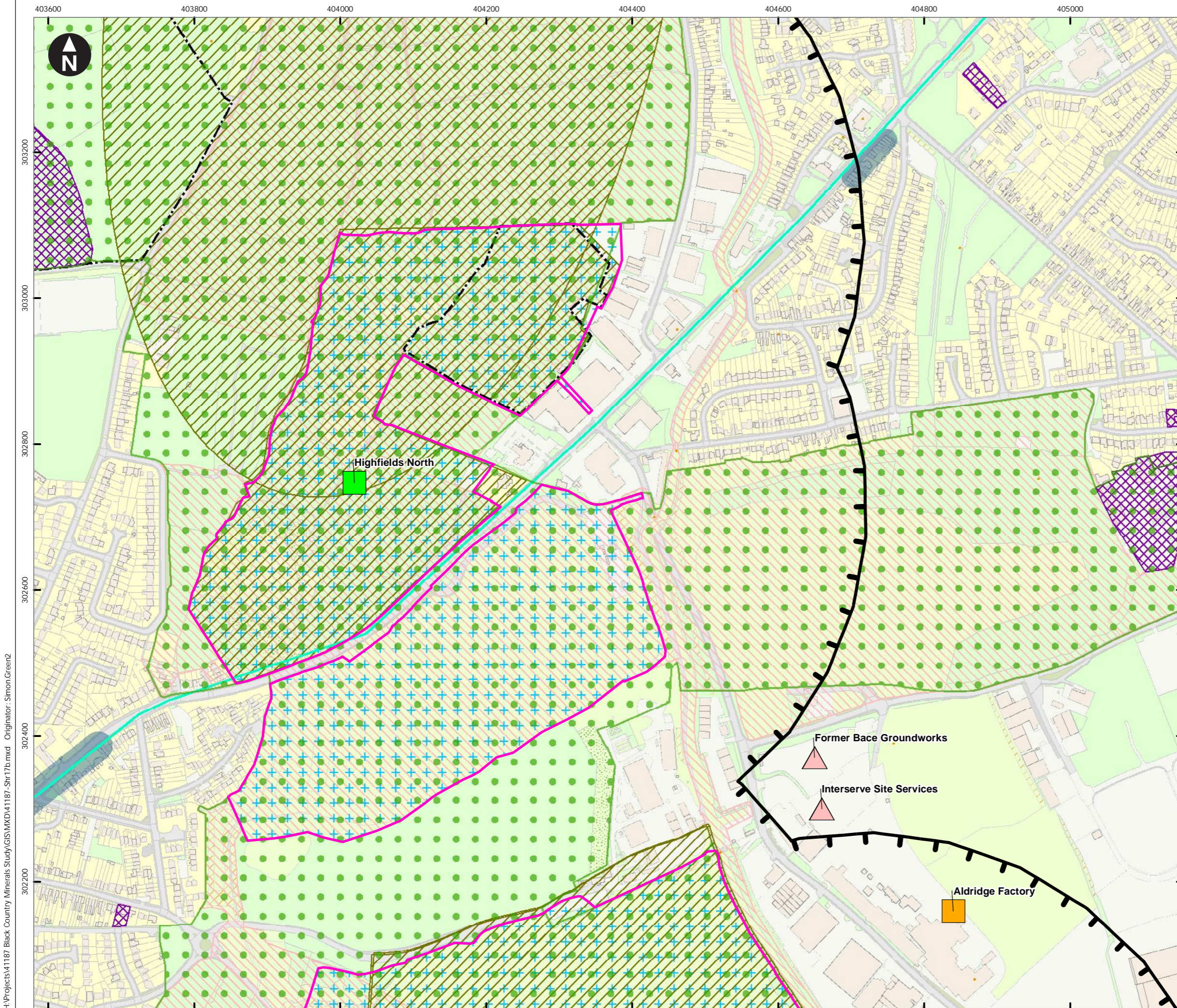


0 50 100 150 200 250 300 m
Scale at A3: 1:5,000
© Crown Copyright. All rights reserved. Licence number AL100001776.

Black Country Minerals Study

Figure C15
Inset Walsall 1

H:\Projects\41187 Black Country Minerals Study\GIS\MXD\41187_Shr17b.mxd Originator: Simon Green2



Key

- Mineral Infrastructure Site boundary
- Land Use**
 - Green Belt
- Nature Conservation**
 - Local Nature Reserve
 - SLINC
 - SINC
 - Wildlife Corridor
- SSSI Impact Risk Zone
- Cultural Heritage**
 - Historic Parks & Gardens II
 - Listed Buildings II
 - Conservation Areas
- Development Pressures**
 - Site promoted through SHLAA
 - Site promoted through BCP Call for Sites
- Other**
 - Air Quality NO₂ Exceedance Areas
 - Noise Action Plan Important Areas
 - Mineral Areas of Search
 - Permitted Mineral Sites
- Mineral Infrastructure Sites** (site boundary included where known)
 - Aggregates Recycling/ Secondary Aggregates
- Mineral Sites (14/06/19)** (site boundary included where known)
 - Brickworks
 - Mineral Extraction

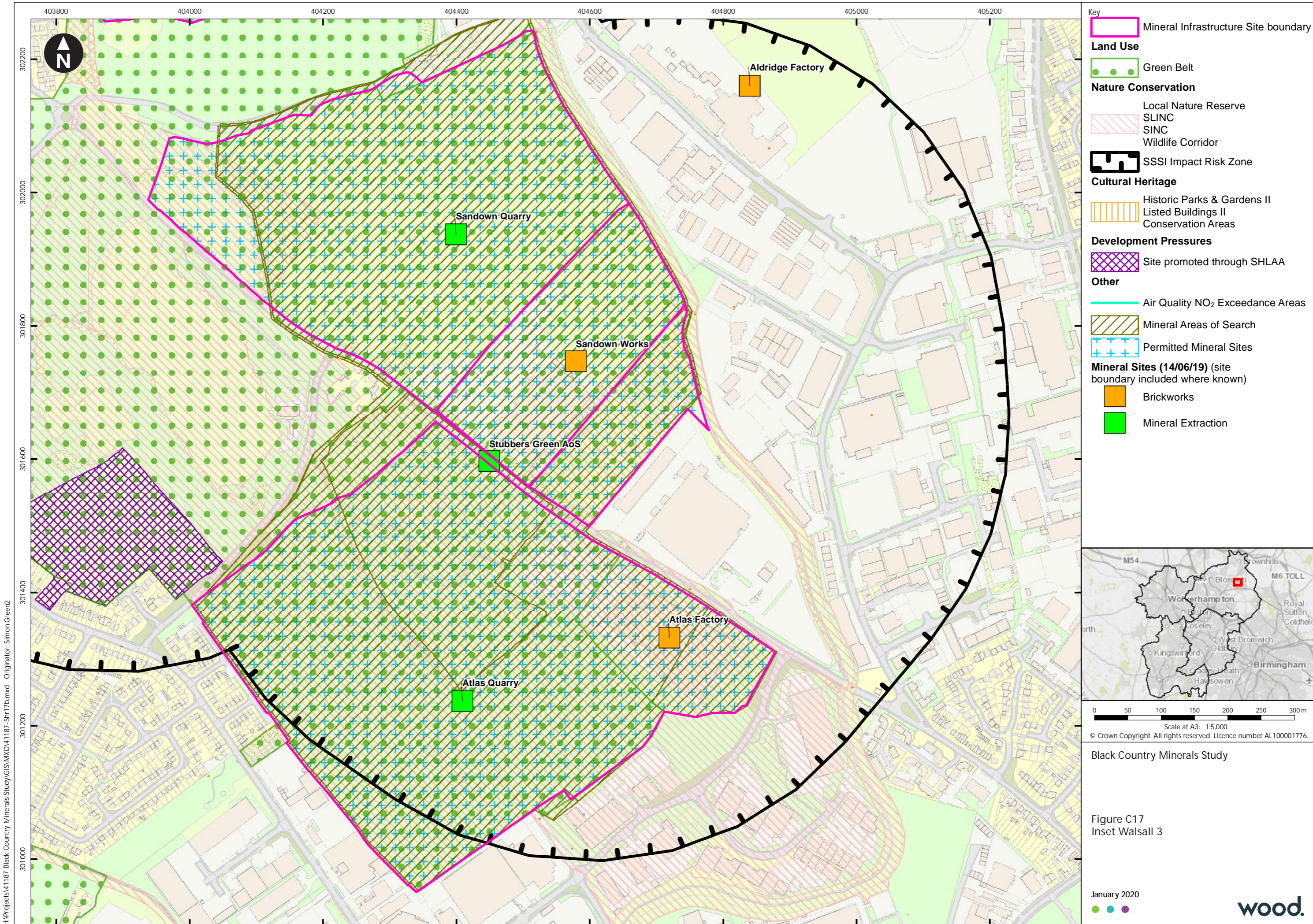


0 50 100 150 200 250 300m
 Scale at A3: 1:5,000
 © Crown Copyright. All rights reserved. Licence number AL100001776.

Black Country Minerals Study

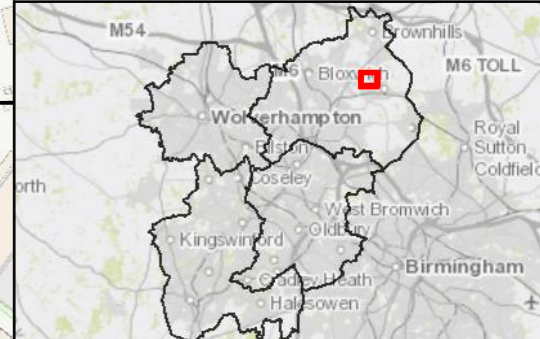
Figure C16
 Inset Walsall 2

January 2020



Key

- Mineral Infrastructure Site boundary
- Land Use**
 - Green Belt
- Nature Conservation**
 - Local Nature Reserve
 - SLINC
 - SINC
 - Wildlife Corridor
- SSSI Impact Risk Zone
- Cultural Heritage**
 - Historic Parks & Gardens II
 - Listed Buildings II
 - Conservation Areas
- Development Pressures**
 - Site promoted through SHLAA
- Other**
 - Air Quality NO₂ Exceedance Areas
 - Mineral Areas of Search
 - Permitted Mineral Sites
- Mineral Sites (14/06/19)** (site boundary included where known)
 - Brickworks
 - Mineral Extraction

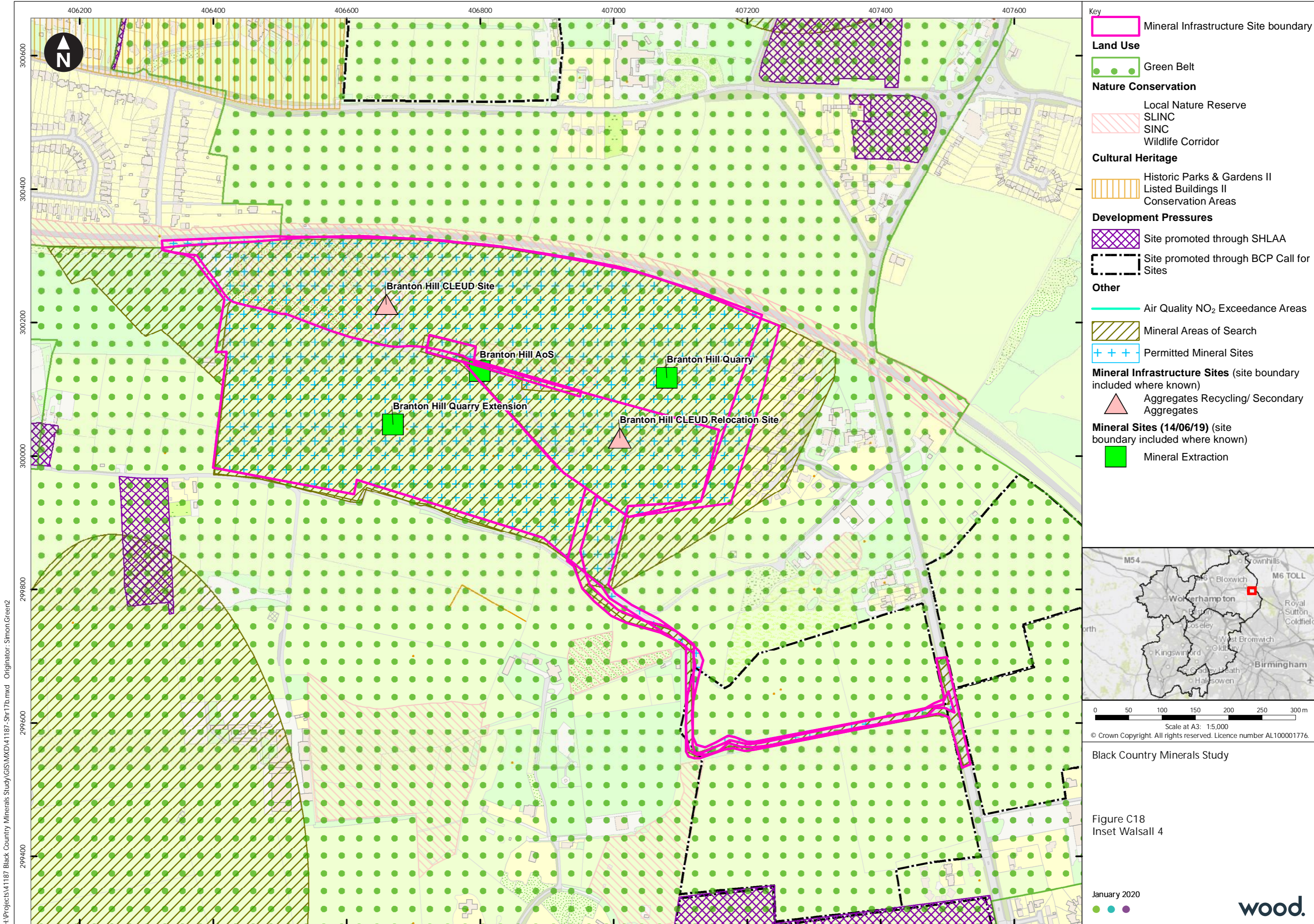


0 50 100 150 200 250 300m
 Scale at A3: 1:5,000
 © Crown Copyright. All rights reserved. Licence number AL100001776.

Black Country Minerals Study

Figure C17
 Inset Walsall 3

H:\Projects\41187 Black Country Minerals Study\GIS\MXD\41187_Shr17b.mxd Originator: Simon Green2



- Key**
- Mineral Infrastructure Site boundary
 - Land Use**
 - Green Belt
 - Nature Conservation**
 - Local Nature Reserve
 - SLINC
 - SINC
 - Wildlife Corridor
 - Cultural Heritage**
 - Historic Parks & Gardens II
 - Listed Buildings II
 - Conservation Areas
 - Development Pressures**
 - Site promoted through SHLAA
 - Site promoted through BCP Call for Sites
 - Other**
 - Air Quality NO₂ Exceedance Areas
 - Mineral Areas of Search
 - Permitted Mineral Sites
 - Mineral Infrastructure Sites** (site boundary included where known)
 - ▲ Aggregates Recycling/ Secondary Aggregates
 - Mineral Sites (14/06/19)** (site boundary included where known)
 - Mineral Extraction

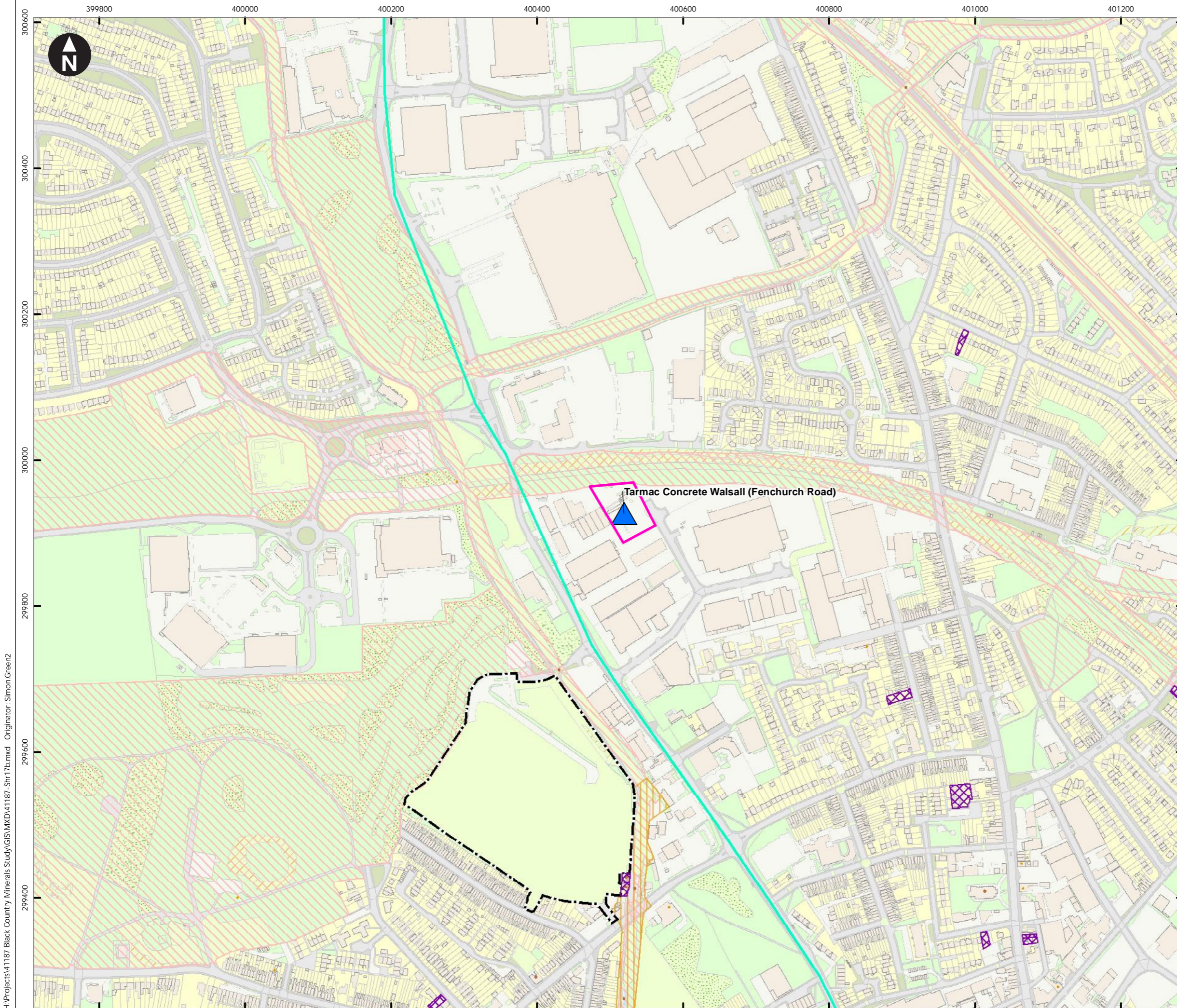


0 50 100 150 200 250 300 m
 Scale at A3: 1:5,000
 © Crown Copyright. All rights reserved. Licence number AL100001776.

Black Country Minerals Study

Figure C18
 Inset Walsall 4

H:\Projects\41187 Black Country Minerals Study\GIS\MXD\41187_Shr17b.mxd Originator: Simon Green2



Key

- Mineral Infrastructure Site boundary
- Land Use**
- Green Belt
- Nature Conservation**
- Local Nature Reserve
- SLINC
- SINC
- Wildlife Corridor
- Cultural Heritage**
- Historic Parks & Gardens II
- Listed Buildings II
- Conservation Areas
- Development Pressures**
- Site promoted through SHLAA
- Site promoted through BCP Call for Sites
- Other**
- Air Quality NO₂ Exceedance Areas
- Mineral Infrastructure Sites (site boundary included where known)**
- ▲ Concrete Batching Plant

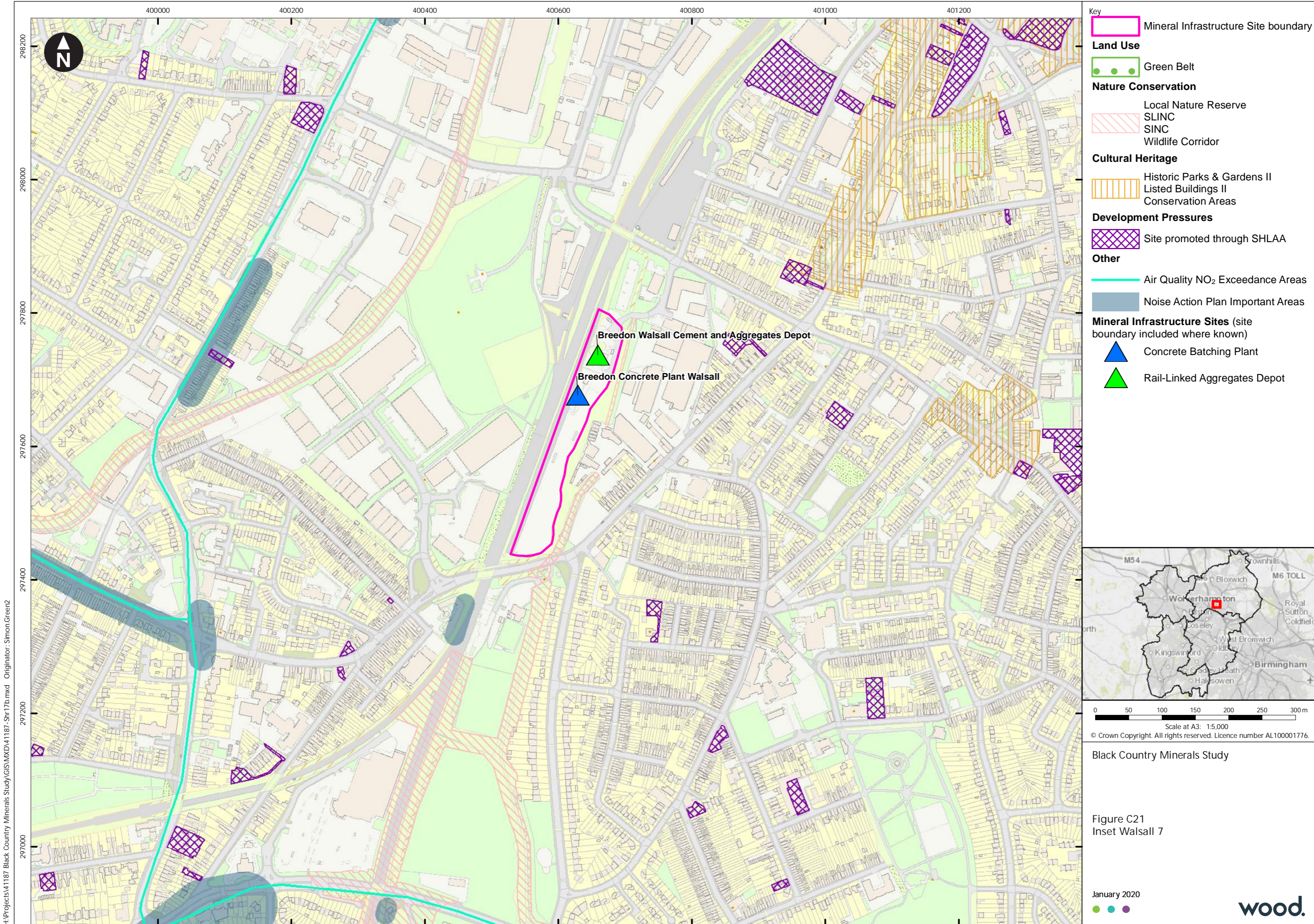


0 50 100 150 200 250 300m
 Scale at A3: 1:5,000
 © Crown Copyright. All rights reserved. Licence number AL100001776.

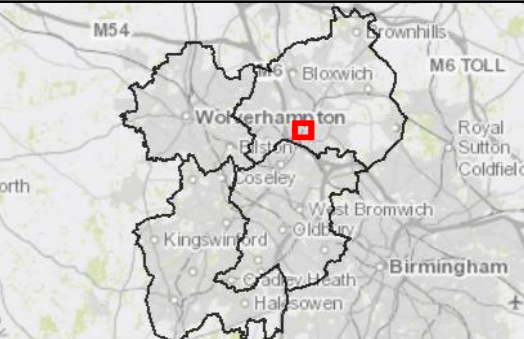
Black Country Minerals Study

Figure C19
 Inset Walsall 5

H:\Projects\41187 - Black Country Minerals Study\GIS\MXD\41187_Shr17\1b.mxd Originator: Simon.Green2



- Key**
- Mineral Infrastructure Site boundary
 - Land Use**
 - Green Belt
 - Nature Conservation**
 - Local Nature Reserve
 - SLINC
 - SINC
 - Wildlife Corridor
 - Cultural Heritage**
 - Historic Parks & Gardens II
 - Listed Buildings II
 - Conservation Areas
 - Development Pressures**
 - Site promoted through SHLAA
 - Other**
 - Air Quality NO₂ Exceedance Areas
 - Noise Action Plan Important Areas
 - Mineral Infrastructure Sites** (site boundary included where known)
 - ▲ Concrete Batching Plant
 - ▲ Rail-Linked Aggregates Depot

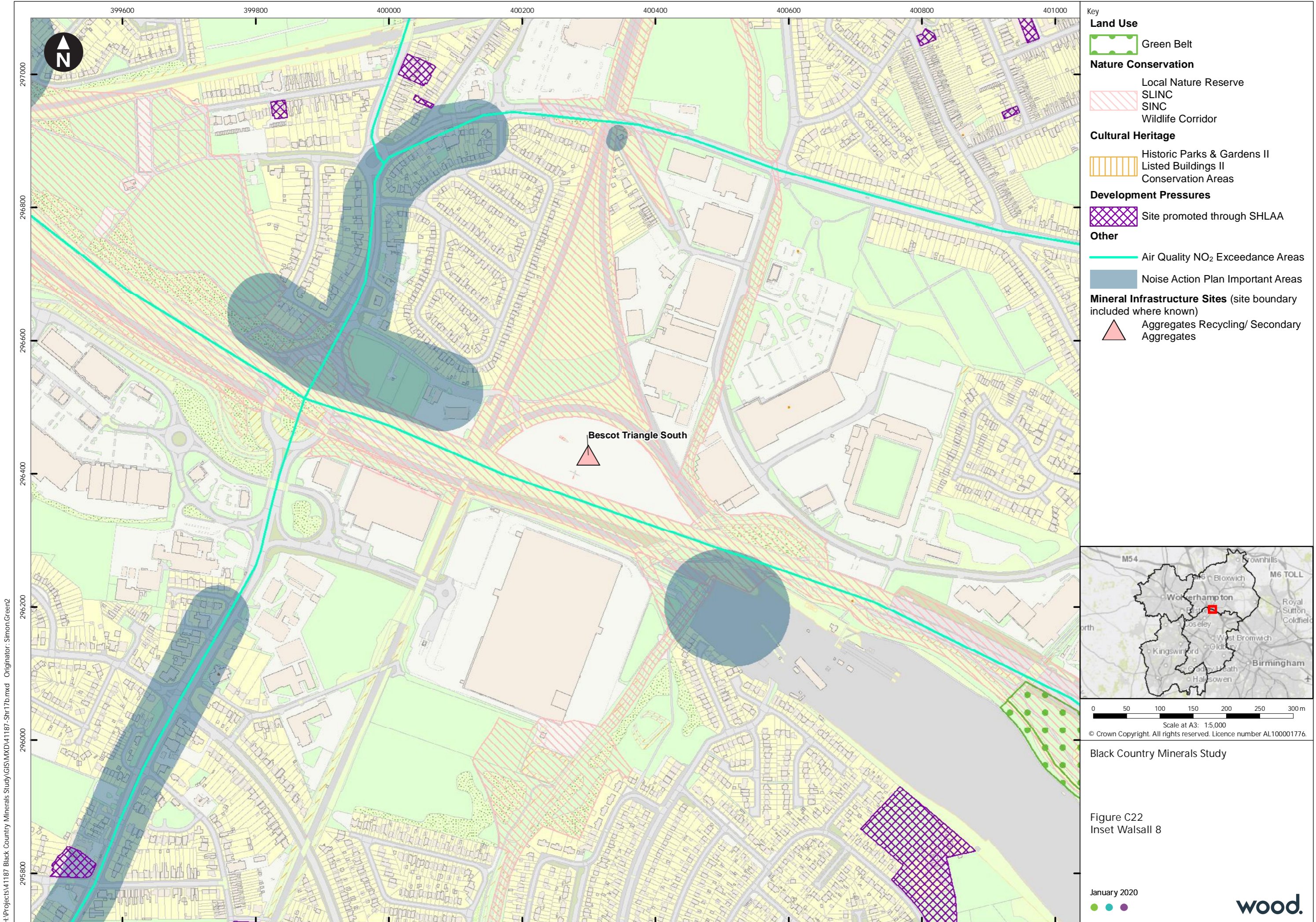


0 50 100 150 200 250 300m
 Scale at A3: 1:5,000
 © Crown Copyright. All rights reserved. Licence number AL100001776.

Black Country Minerals Study

Figure C21
 Inset Walsall 7

H:\Projects\41187 Black Country Minerals Study\GIS\MXD\41187_Shr17b.mxd Originator: Simon.Green2



- Key**
- Land Use**
 - Green Belt
 - Nature Conservation**
 - Local Nature Reserve
 - SLINC
 - SINC
 - Wildlife Corridor
 - Cultural Heritage**
 - Historic Parks & Gardens II
 - Listed Buildings II
 - Conservation Areas
 - Development Pressures**
 - Site promoted through SHLAA
 - Other**
 - Air Quality NO₂ Exceedance Areas
 - Noise Action Plan Important Areas
 - Mineral Infrastructure Sites (site boundary included where known)**
 - Aggregates Recycling/ Secondary Aggregates



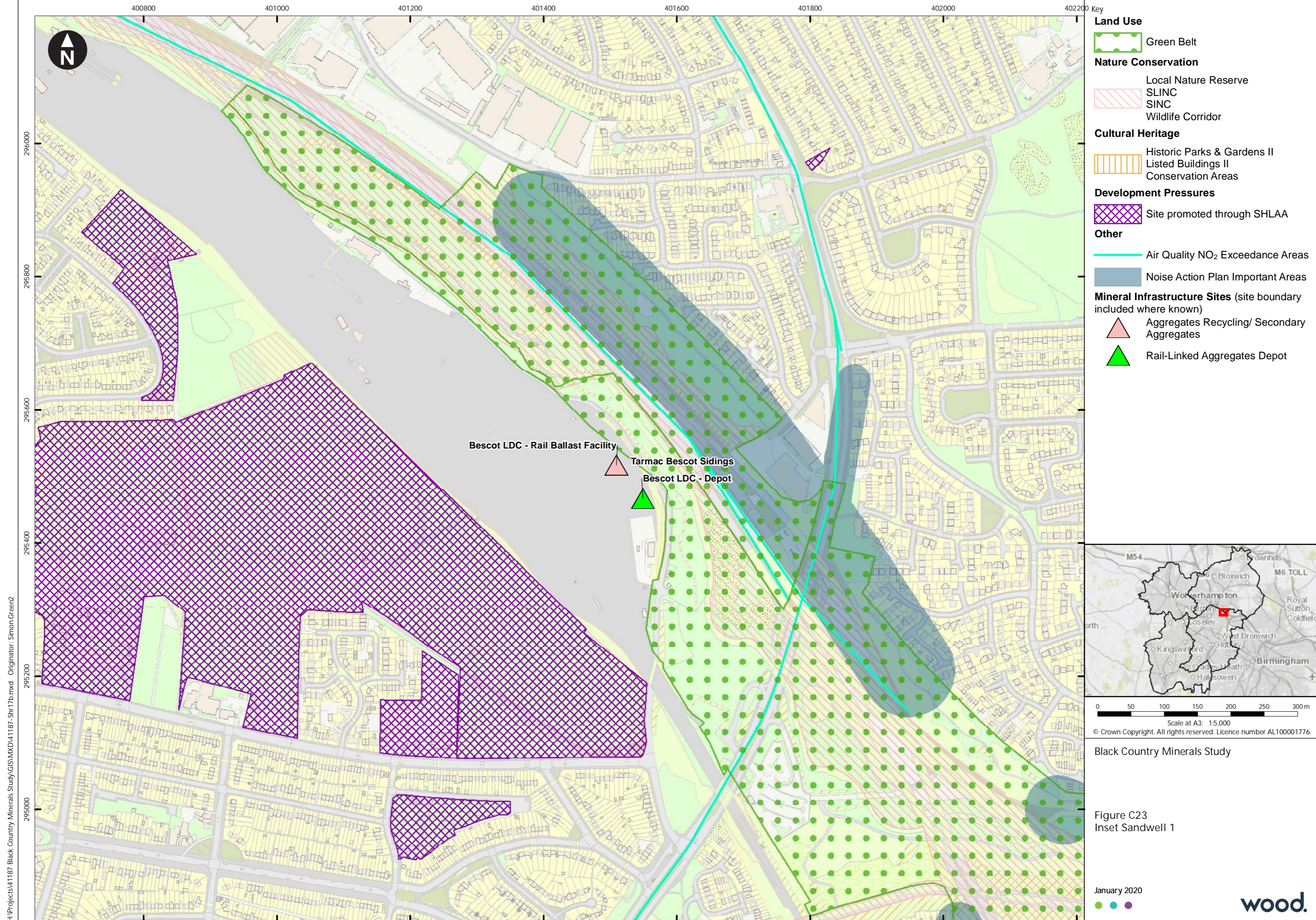
0 50 100 150 200 250 300m
 Scale at A3: 1:5,000
 © Crown Copyright. All rights reserved. Licence number AL100001776.

Black Country Minerals Study

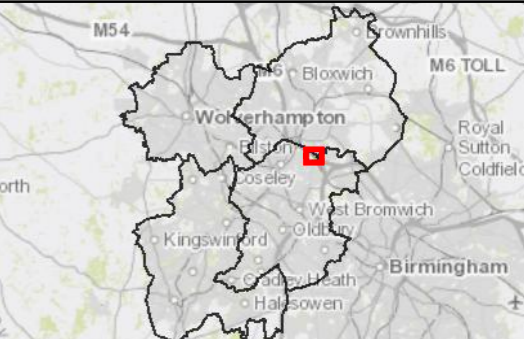
Figure C22
 Inset Walsall 8

January 2020

H:\Projects\1187 Black Country Minerals Study\GIS\MXD\1187_Shr17b.mxd Originator: Simon.Green2



- Key**
- Land Use**
 - Green Belt
 - Nature Conservation**
 - Local Nature Reserve
 - SLINC
 - SINC
 - Wildlife Corridor
 - Cultural Heritage**
 - Historic Parks & Gardens II
 - Listed Buildings II
 - Conservation Areas
 - Development Pressures**
 - Site promoted through SHLAA
 - Other**
 - Air Quality NO₂ Exceedance Areas
 - Noise Action Plan Important Areas
 - Mineral Infrastructure Sites** (site boundary included where known)
 - Aggregates Recycling/ Secondary Aggregates
 - Rail-Linked Aggregates Depot

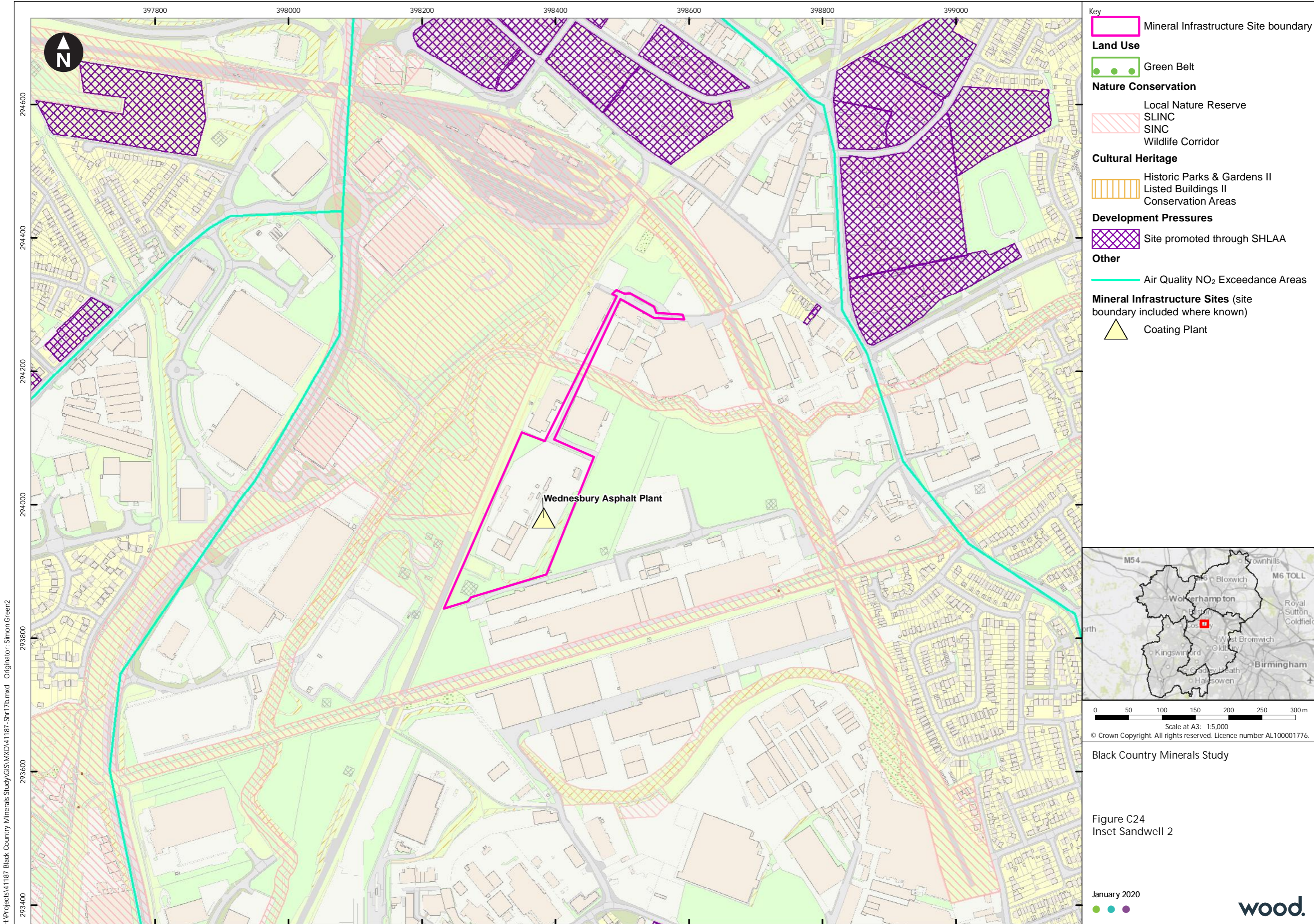


0 50 100 150 200 250 300m
 Scale at A3: 1:5,000
 © Crown Copyright. All rights reserved. Licence number AL100001776.

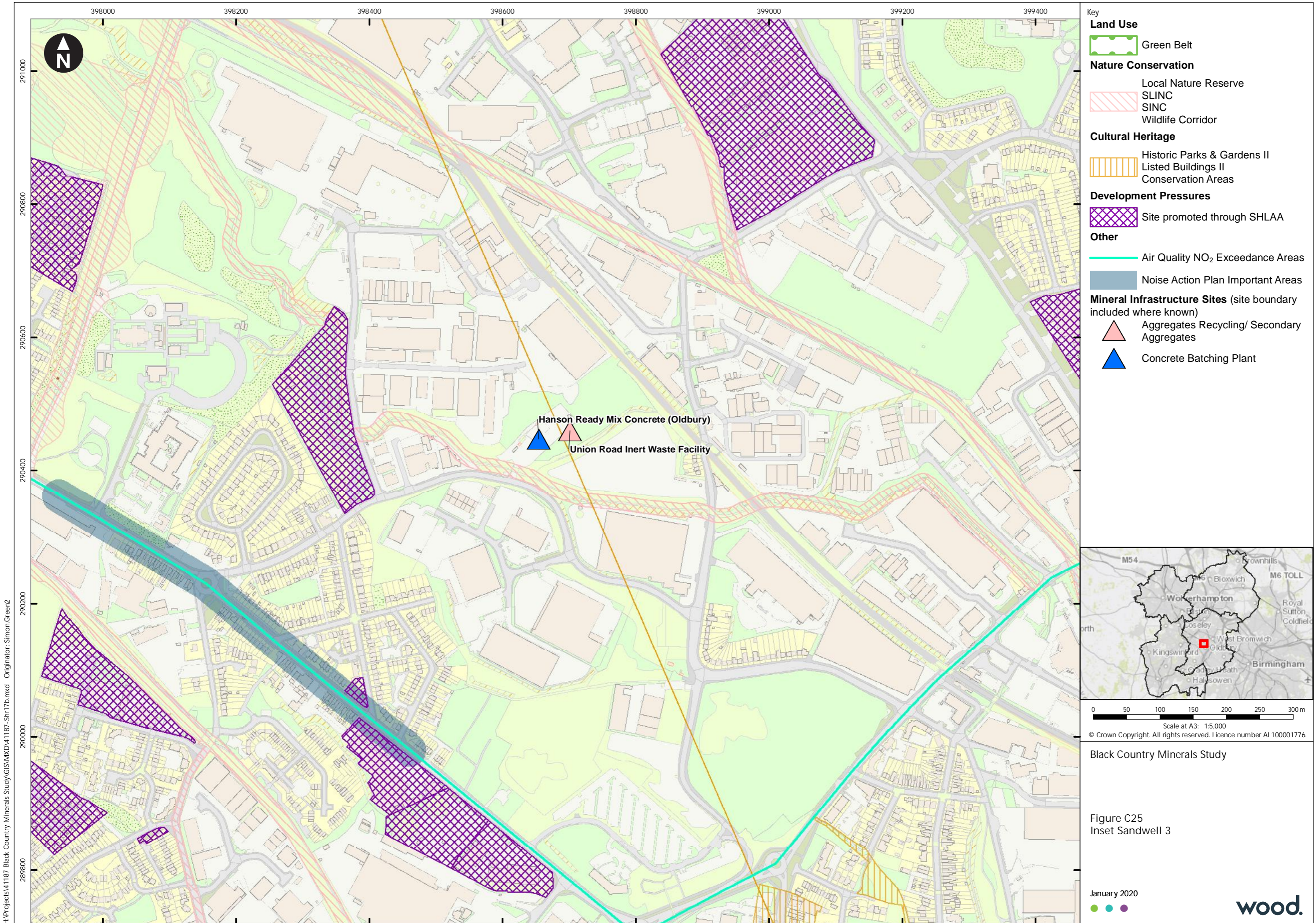
Black Country Minerals Study

Figure C23
 Inset Sandwell 1

H:\Projects\41187 - Black Country Minerals Study\GIS\MXD\41187_Shr17b.mxd Originator: Simon Green2



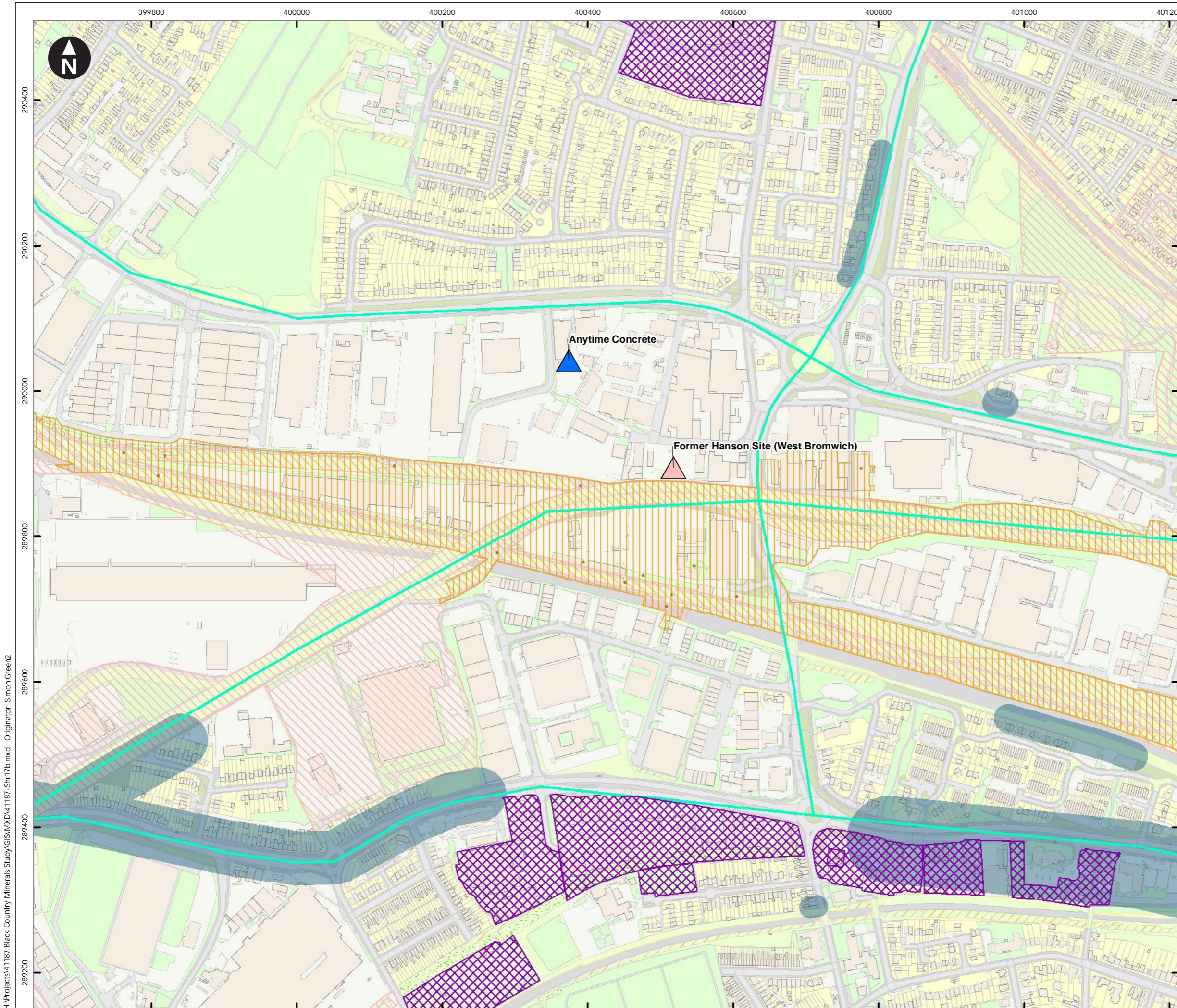
H:\Projects\1187 Black Country Minerals Study\GIS\MXD\1187_Shr17b.mxd Originator: Simon Green2



H:\Projects\41187 - Black Country Minerals Study\GIS\MXD\41187_Shr17b.mxd Originator: Simon Green2



0 50 100 150 200 250 300m
Scale at A3: 1:5,000
© Crown Copyright. All rights reserved. Licence number AL100001776.



Key

Land Use

- Green Belt

Nature Conservation

- Local Nature Reserve
- SLINC
- SINC
- Wildlife Corridor

Cultural Heritage

- Historic Parks & Gardens II
- Listed Buildings II
- Conservation Areas

Development Pressures

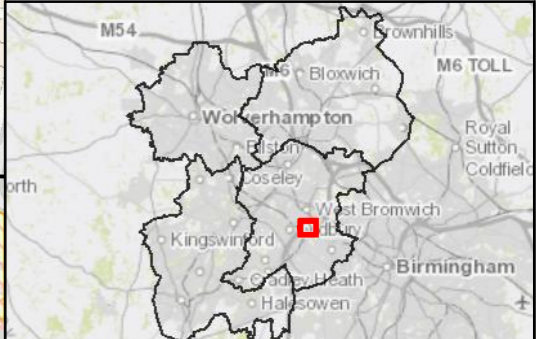
- Site promoted through SHLAA

Other

- Air Quality NO₂ Exceedance Areas
- Noise Action Plan Important Areas

Mineral Infrastructure Sites (site boundary included where known)

- Aggregates Recycling/ Secondary Aggregates
- Concrete Batching Plant



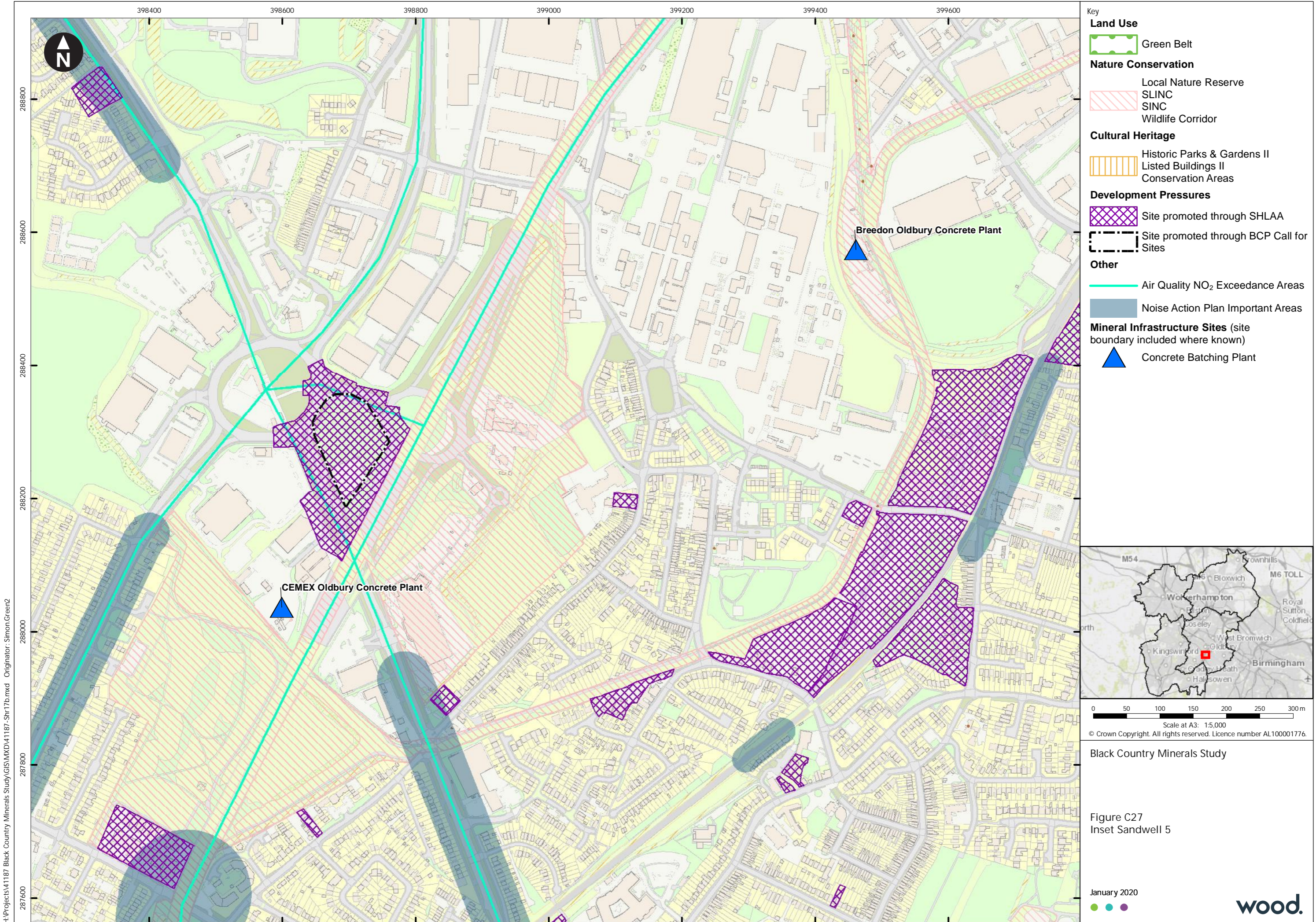
0 50 100 150 200 250 300m
 Scale at A3: 1:5,000
 © Crown Copyright. All rights reserved. Licence number AL100001776.

Black Country Minerals Study

Figure C26
 Inset Sandwell 4

January 2020

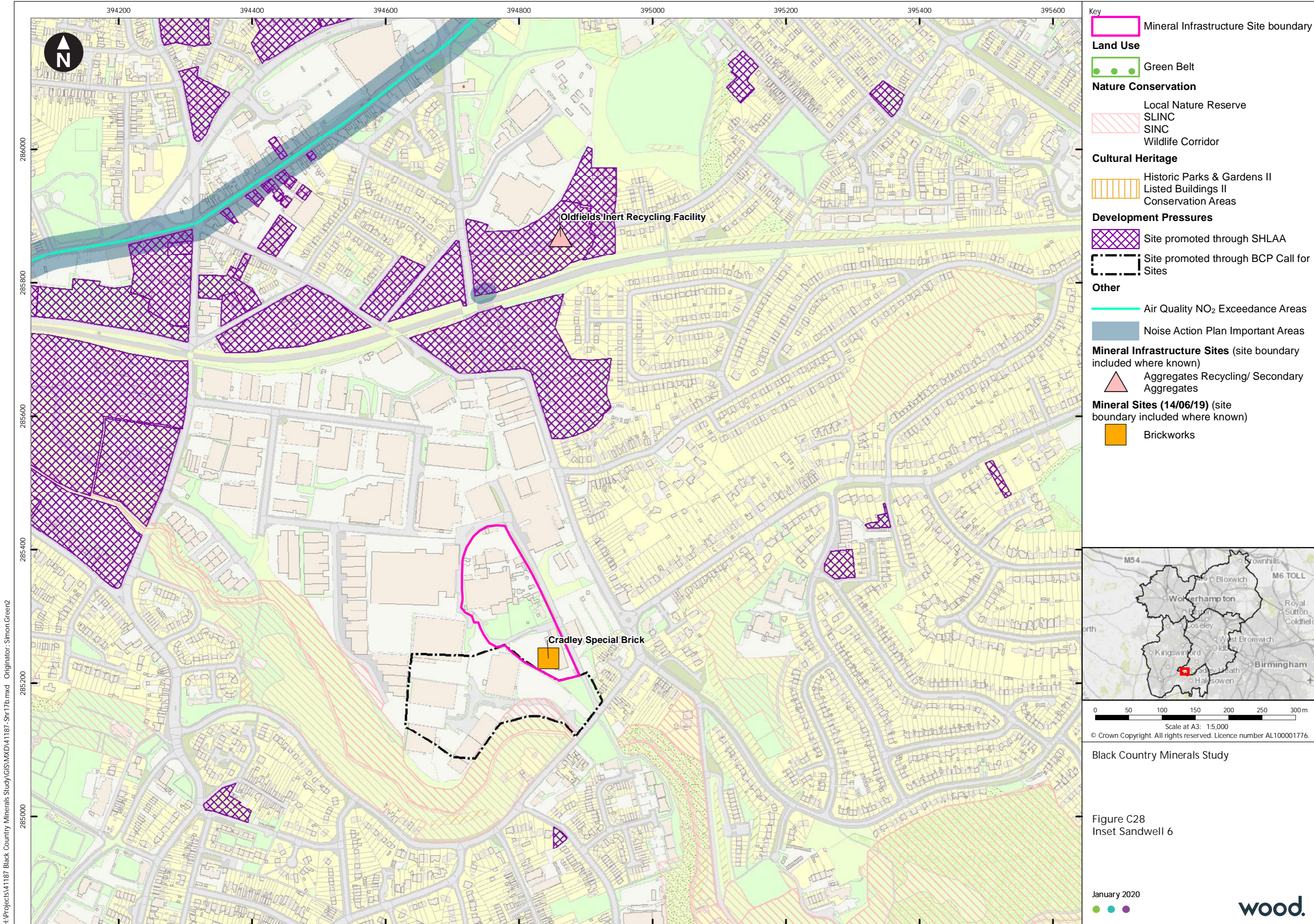
H:\Projects\41187 - Black Country Minerals Study\GIS\MXD\41187_Shr17b.mxd Originator: Simon Green2



H:\Projects\41187 - Black Country Minerals Study\GIS\MXD\41187_Shr17b.mxd Originator: Simon Green2

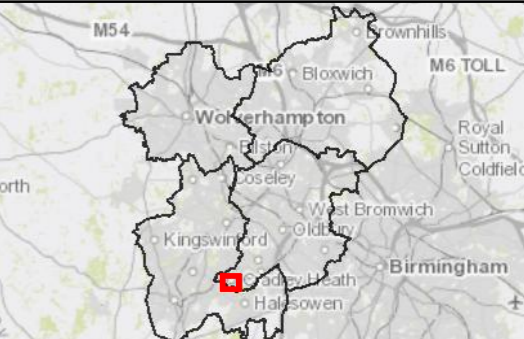


0 50 100 150 200 250 300m
Scale at A3: 1:5,000
© Crown Copyright. All rights reserved. Licence number AL10001776.



Key

- Mineral Infrastructure Site boundary
- Land Use**
- Green Belt
- Nature Conservation**
- Local Nature Reserve
- SLINC
- SINC
- Wildlife Corridor
- Cultural Heritage**
- Historic Parks & Gardens II
- Listed Buildings II
- Conservation Areas
- Development Pressures**
- Site promoted through SHLAA
- Site promoted through BCP Call for Sites
- Other**
- Air Quality NO₂ Exceedance Areas
- Noise Action Plan Important Areas
- Mineral Infrastructure Sites** (site boundary included where known)
- ▲ Aggregates Recycling/ Secondary Aggregates
- Mineral Sites (14/06/19)** (site boundary included where known)
- Brickworks



0 50 100 150 200 250 300m
 Scale at A3: 1:5,000
 © Crown Copyright. All rights reserved. Licence number AL100001776.

Black Country Minerals Study

Figure C28
 Inset Sandwell 6

H:\Projects\41187 Black Country Minerals Study\GIS\MXD\41187_Shr17b.mxd Originator: Simon.Green2

wood.

