

April 2023 Newsletter

AIR POLLUTION THEME OF THE MONTH: SHARED TRANSPORT



In this issue find out more about:

- > What is shared transport?
- > Bike share schemes
- > Car clubs
- > Car sharing
- > Shared transport availability in Sandwell

What is shared transport?

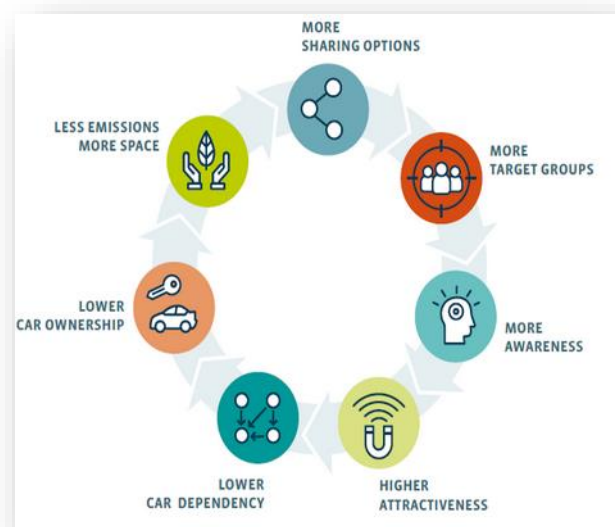
Shared transport, or shared mobility, is when passengers share a vehicle with other passengers as a group at the same time or over a period of time, such as personal rental. This reduces the cost of travel by splitting the costs. Shared transport- such as taking public transportation, carpooling, or bike hire schemes- provide a low-carbon mode of transportation. One of the main advantages of shared transport is its variety, meaning you are more likely to find a service that works for you. Other benefits include:

Reducing:

- Car dependency use and ownership
- Congestion
- Harmful air pollution emissions

Increasing:

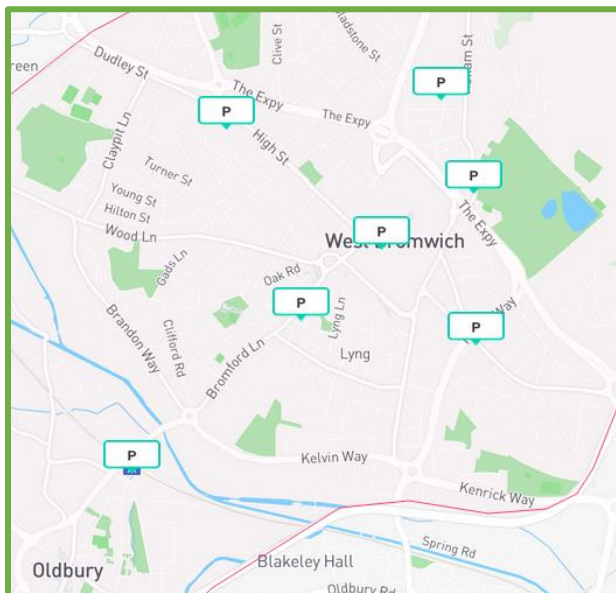
- Travel options and flexibility
- Use of sustainable and healthy travel modes
- Affordable mobility
- Safer streets



Bike Share Schemes

Bike share schemes make bikes available to the public that can be hired by the hour or the day.

Schemes can include docked (where bikes must be left and picked up from specific docking areas) or dockless (where bikes can be left and picked up from anywhere within a certain radius).



Beryl Bike Docking Stations in Sandwell

Did you know that Sandwell is part of the West Midlands 'Beryl' bike scheme? You can find out more, including where docking stations are located and how to get the app at <https://beryl.cc/scheme/west-midlands>.

The benefits of bike share schemes are:

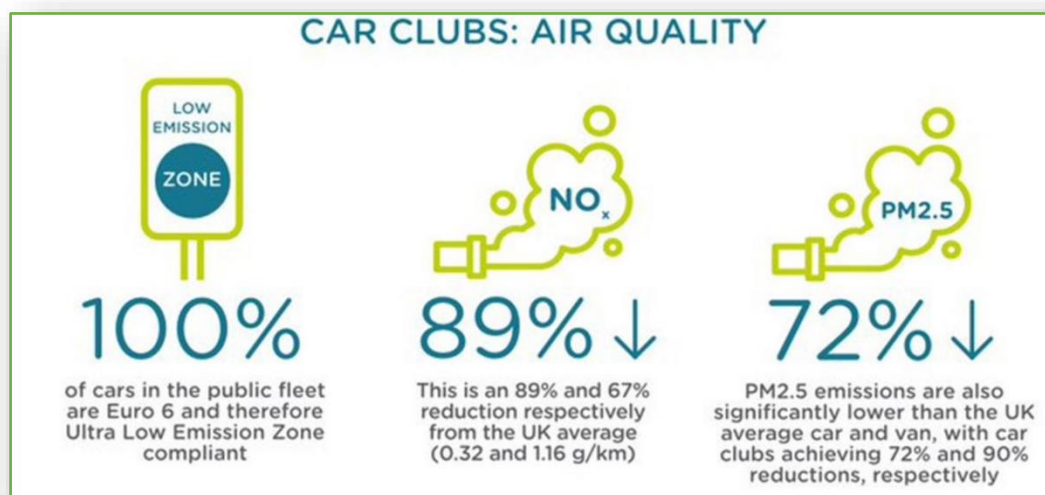
- Zero emission journeys.
- Improves your health, fitness, and well-being by facilitating active travel.
- Less expensive than a car because you just pay for the trips you make.
- Gives you the opportunity to explore cycling without having to buy a bike.
- The ability to use a bike without the need for storage.



Car clubs

Car clubs provide quick access to cars located in or near your local area without you needing to own a car yourself. They enable club members to share cars and pay only when they use them. Car clubs can be a less expensive option than purchasing a car, and they are also ideal for people who do not need to drive on a regular basis. Club car vehicles are typically newer than the average UK car and this means:

- 37% less CO2 emitted from the tailpipe.
- More comfortable drive.
- Safer to drive.
- Electric vehicles are often available.



The benefits of a car club include:

- Helping you to be more active, walking to and from your club car collection point.
- They are convenient and easy to use. Just book, show up, drive, and return.
- With no maintenance costs, no road tax, and no insurance, it is usually much cheaper than running a private car, particularly if you only use a car infrequently. You only pay as you drive!

Car sharing/carpooling

Car sharing, carpooling, or ride sharing is when two or more people travel together in one vehicle on routine, common trips. You may save money and

lessen your carbon footprint by splitting the cost of your car journeys with

friends, co-workers, and neighbours.

The benefits of carpooling include:



- Reduced congestion and improved local air quality by reducing the number of cars on the road.
- Reduces fuel consumption
- Reduces greenhouse gas (GHG) emissions
- Eliminates pollution
- Reduces your carbon footprint

Shared Transport Options in Sandwell

- To find people you can car share with in Sandwell, visit <https://liftshare.com/uk/community/sandwell> You can also register to join Sandwell Council liftshare community or carshare Sandwell on the same website.
- There's also the cycle hire scheme developed by Transport for West Midlands (TfWM), part of the West Midlands Combined Authority (WMCA) in partnership with local councils. There are cycling docks across the six towns in Sandwell, you just need to download the West Midland Cycle App here <https://www.wmcyclehire.co.uk/beryl/> then follow the instructions to find and unlock the nearest bike to you.
- For more information about how you can travel locally without needing a car, go to our Facebook page <https://www.facebook.com/walkandcyclesandwell/>
- 'TravelWise in Sandwell' is a page you can find all information regarding travelling by low carbon and sustainable modes. https://www.sandwell.gov.uk/info/200284/roads_travel_and_parking/1830/travelwise_in_sandwell. It also includes travel related advice for schools and businesses.
- **Como UK** is the national charity for shared transport. For more information on how to become a member visit <https://www.como.org.uk/>

If you have any questions about any of the items featured in this or previous newsletters, or maybe you have a story you would like to share about what your centre is doing to help improve local air quality, please contact us at pollution_control@sandwell.gov.uk.