

IMPORTANT
 The Contractor will be responsible for setting out the work. All dimensions must be obtained from or checked on site. Figured dimensions to be used in preference to scale.

- NOTES**
- All signs and road markings to be in accordance with The Traffic Signs Regulations and General Directions 2016 (TSRGD) and Chapter 5 Road Markings 2018.
 - For construction details refer to SMBC standard detail drawings SD/700/14 and 15.
 - Setting out to be agreed on site with the Engineer.
 - All dimensions to kerb face.
 - Statutory Undertakers searches to be checked prior to any excavations

- KEY**
- Highway Boundary
 - Cycleway/Footway/Build-Out
 - Transition kerbs
 - SP kerbs (50mm kerb face)
 - HB2 kerbs
 - EF kerbs
 - HB2 kerbs (50mm kerb face)
 - HB transition kerb (HB2 50mm face to BN drop kerb)
 - BN drop kerbs
 - HB quadrant concrete kerbs (305mm x 305mm x 255mm)
 - Pedestrian Guardrail
 - Tactile paving (400mm² modules) controlled crossing
 - Tactile paving (400mm² modules) Un-controlled crossing
 - Belisha Beacon
 - Shared cycleway/footway surfacing Ladder (footway)/Tramline (cycle track) 2.4m deep
 - Corduroy hazard warning surfacing
 - Traffic Sign



ASSISTANT DIRECTOR HIGHWAYS
 Robin Weare, BSc, C.Eng, M.I.C.E., MBA
 Sandwell Council House
 Freeth Street Oldbury
 West Midlands B69 3DE
 E-mail: Highways@sandwell.gov.uk

PROJECT
 A4030 SAFER ROADS FUND

LOCATION
 SMETHWICK

DRAWING TITLE
 GENERAL ARRANGEMENT
 PHASE 1
 SHEET 1 OF 5

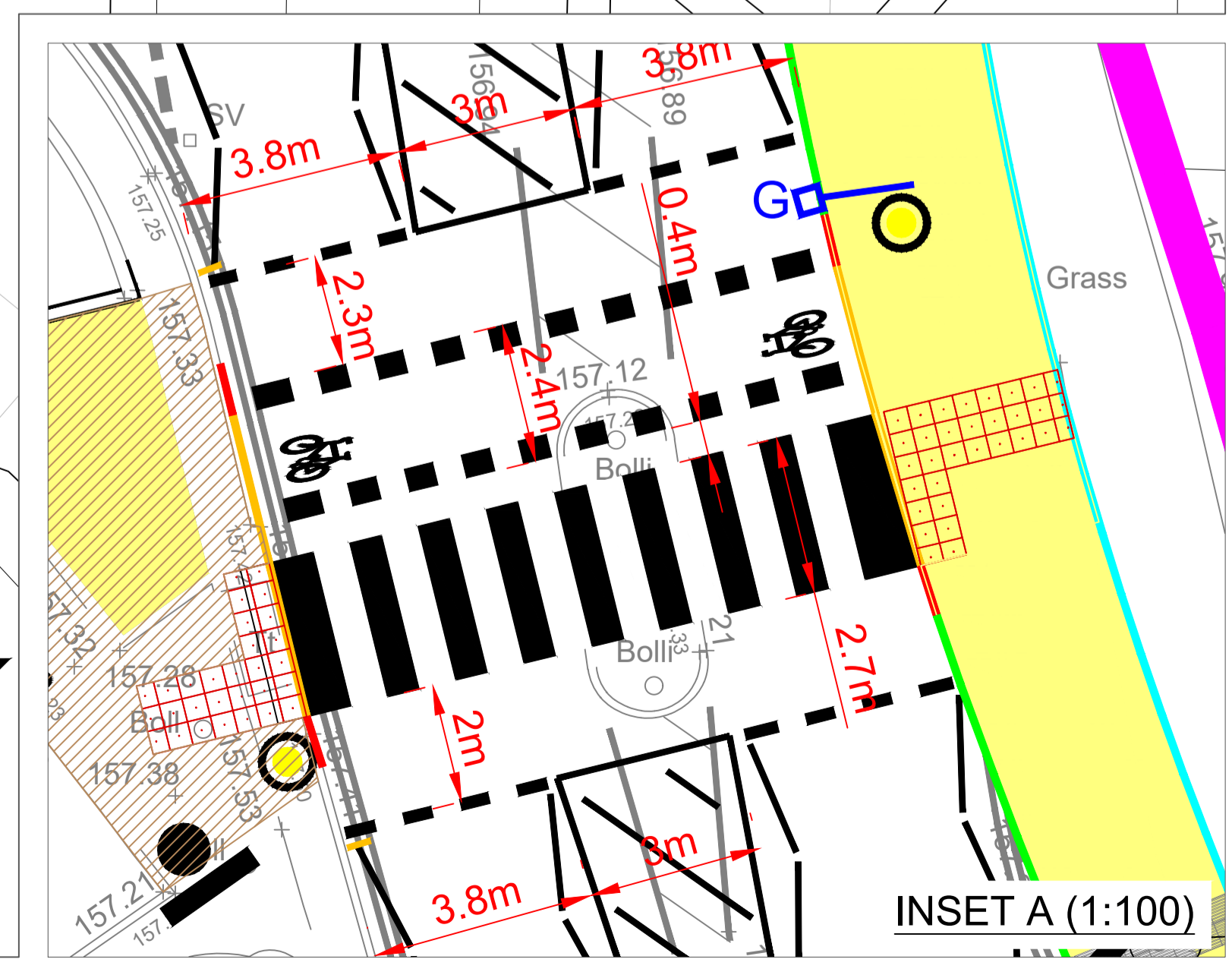
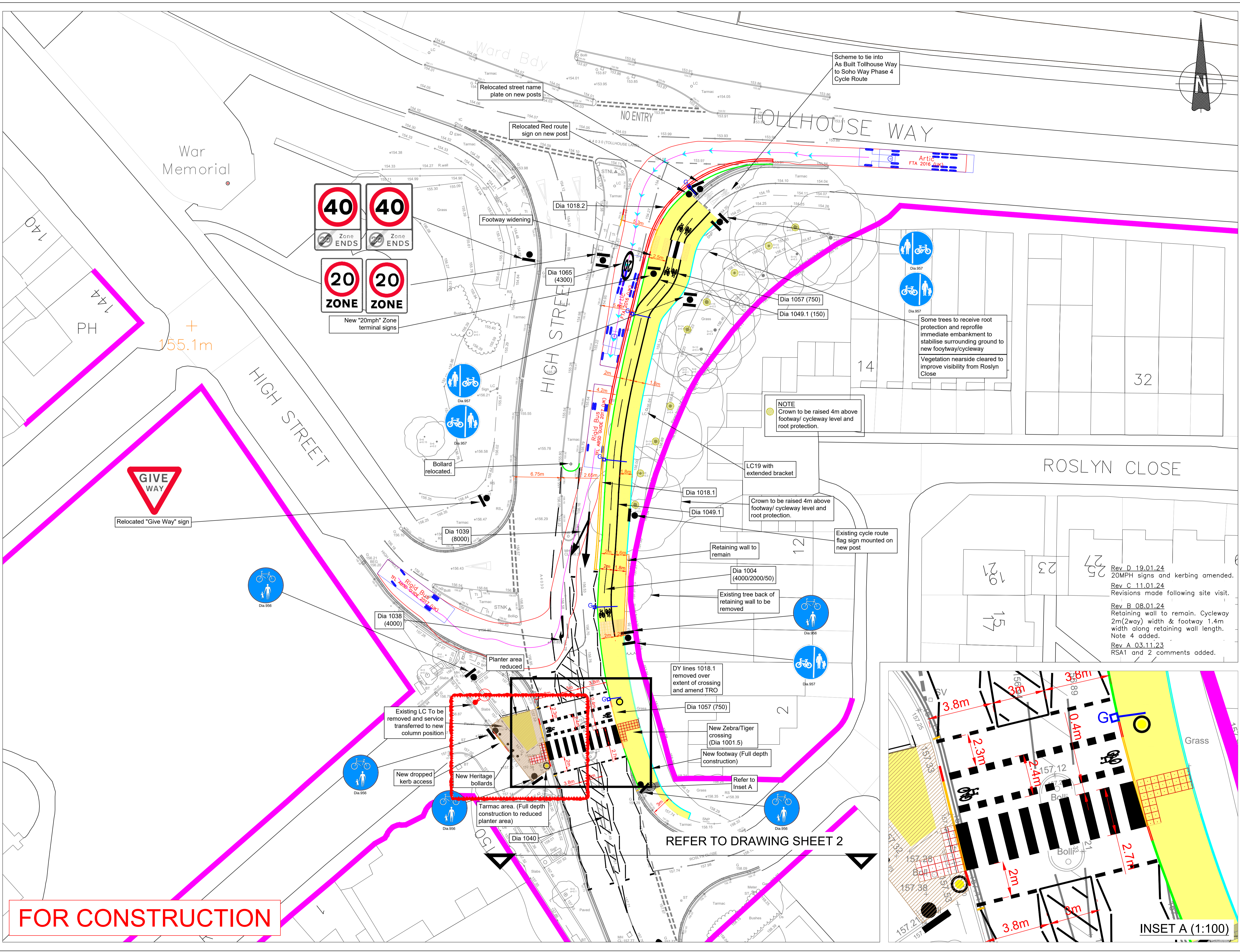
SCALE 1:250

ISSUED BY T.CHATWIN

DATE APRIL 2023

DRAWN BY D.FRANCIS

DRAWING No 41053 S/1 (Rev E)



FOR CONSTRUCTION

REFER TO DRAWING SHEET 2

Rev. D 19.01.24
 20MPH signs and kerbing amended.
 Rev. C 11.01.24
 Revisions made following site visit.
 Rev. B 08.01.24
 Retaining wall to remain. Cycleway
 2m(2way) width & footway 1.4m
 width along retaining wall length.
 Note 4 added.
 Rev. A 03.11.23
 RSA1 and 2 comments added.