

ASSISTANT DIRECTOR HIGHWAYS

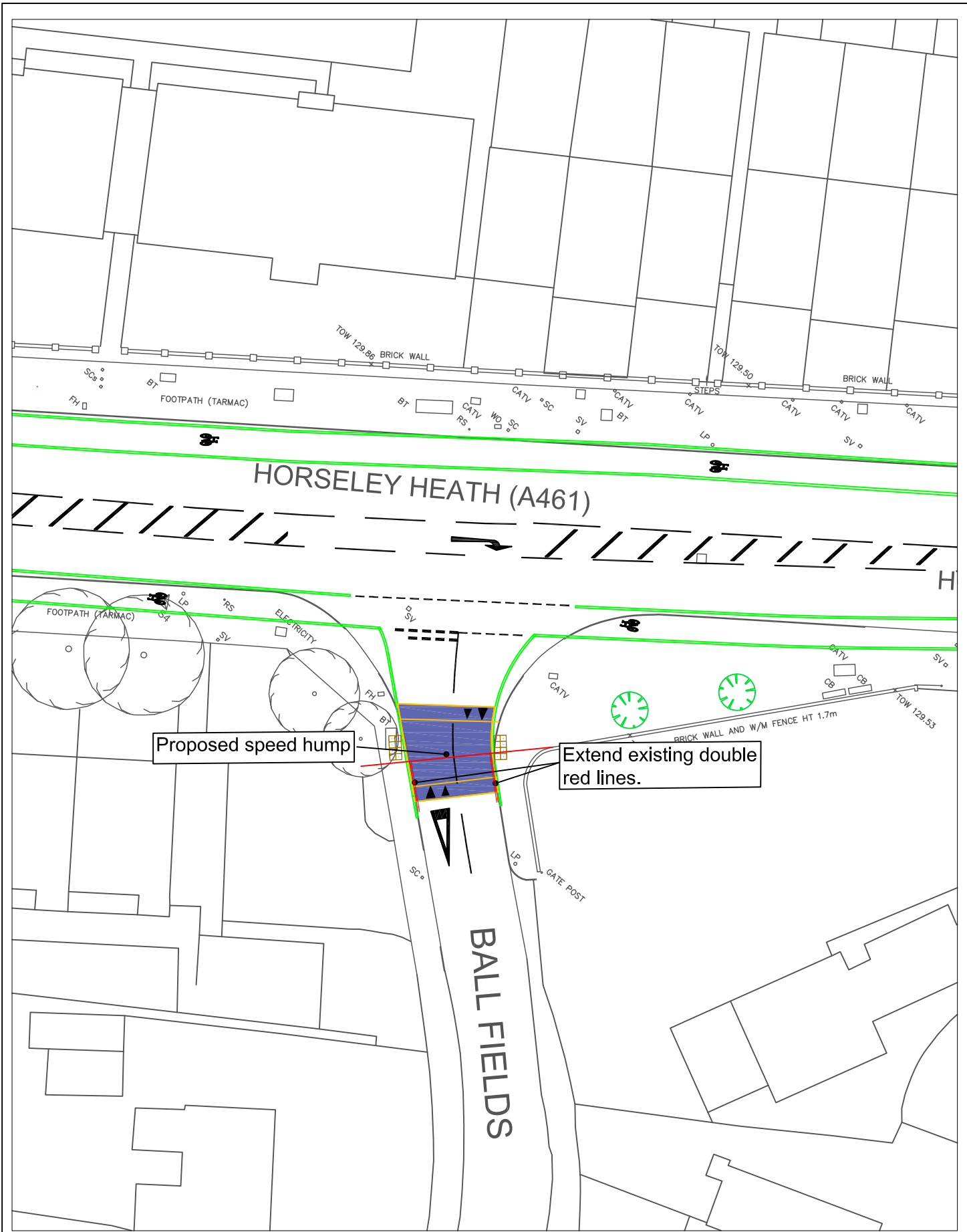
Robin Weare, B.Sc., C.Eng., M.I.C.E., MBA.
Sandwell Council House
Freeth Street Oldbury
West Midlands B69 3DE

E-mail: Highways@sandwell.gov.uk

**ACTIVE TRAVEL FUND 3 - PEAKE DRIVE TO GREAT BRIDGE, TIPTON
PROPOSED SPEED HUMP & PARKING RESTRICTIONS - ARNHEM WAY**



SCALE	N.T.S.
DATE	Oct 23
ISSUED BY	Assistant Director - Highways
DRAWING No	54,824 S/4 (7:16)
DRAWN BY	S.S.



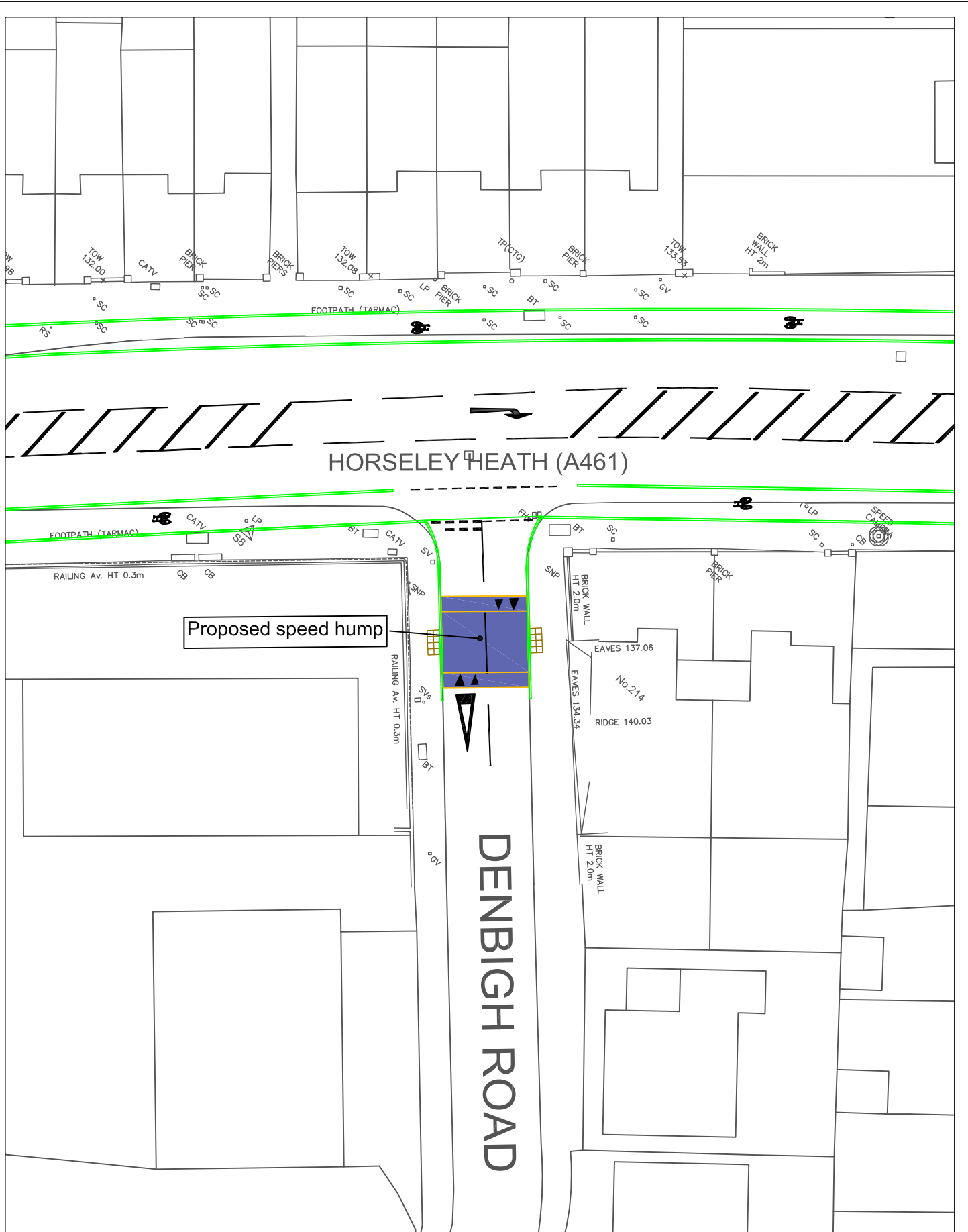


ASSISTANT DIRECTOR HIGHWAYS
 Robin Weare, BSc, C.Eng, M.I.C.E, MBA.
 Sandwell Council House
 Freeth Street Oldbury
 West Midlands B69 3DE
 E-mail: Highways@sandwell.gov.uk

ACTIVE TRAVEL FUND 3 - PEAKE DRIVE TO GREAT BRIDGE, TIPTON
PROPOSED SPEED HUMPS & PARKING RESTRICTIONS - BALLFIELDS

© Crown copyright and database rights 2012
 Ordnance Survey Licence No 100032119

SCALE	N.T.S.
DATE	Oct 23
ISSUED BY	Assistant Director - Highways
DRAWING No	54,824 S/4 13:16)
DRAWN BY	S.S.



Proposed speed hump

DENBIGH ROAD

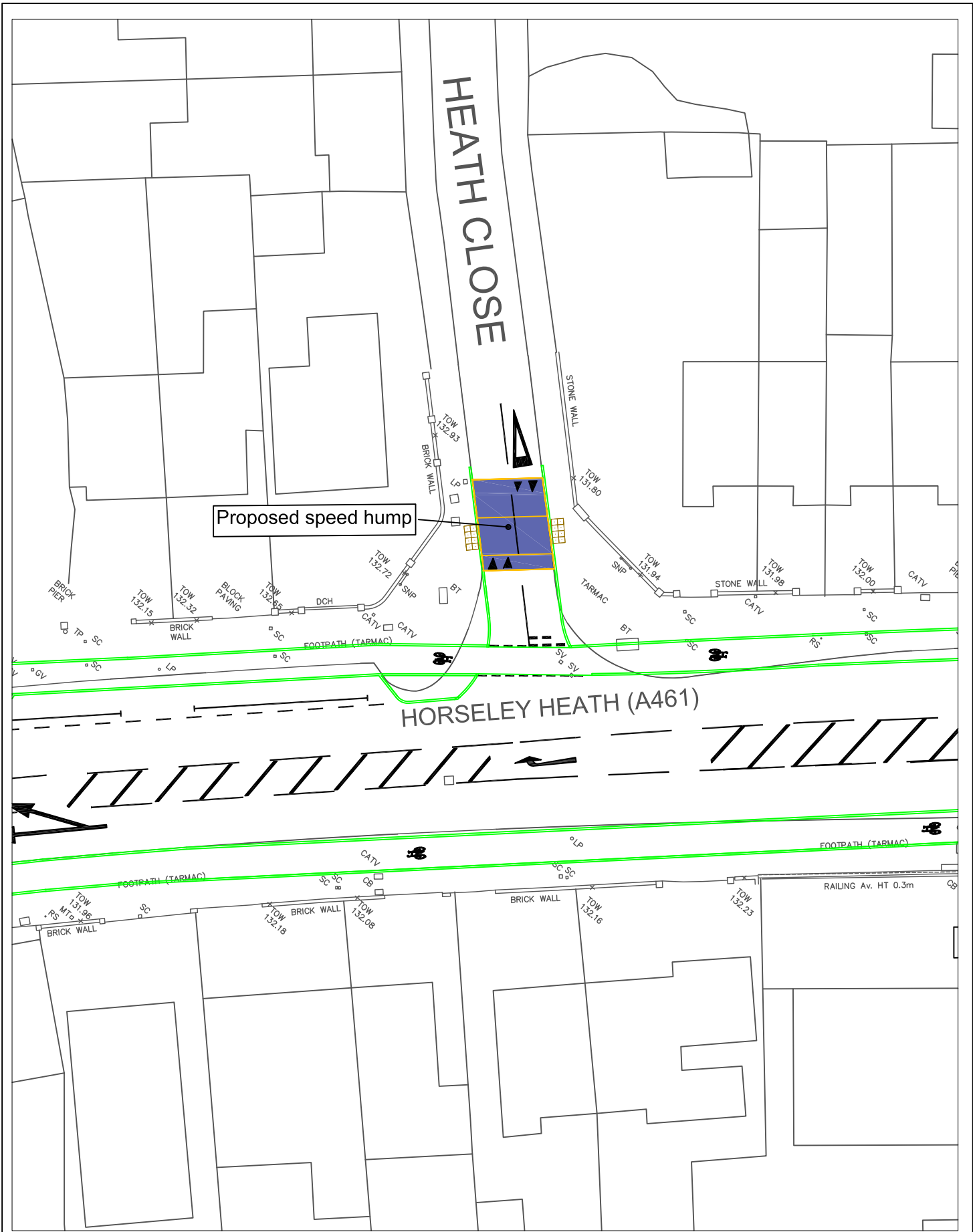
HORSELEY HEATH (A461)



ASSISTANT DIRECTOR HIGHWAYS
 Robin Weare, BSc, C.Eng, M.I.C.E, MBA.
 Sandwell Council House
 Freeth Street Oldbury
 West Midlands B69 3DE
 E-mail: Highways@sandwell.gov.uk

ACTIVE TRAVEL FUND 3 - PEAKE DRIVE TO GREAT BRIDGE, TIPTON
PROPOSED SPEED HUMP - DENBIGH ROAD

SCALE	N.T.S.
DATE	Oct 23
ISSUED BY	Assistant Director - Highways
DRAWING No	54,824 S/4 (4:16)
DRAWN BY	S.S.





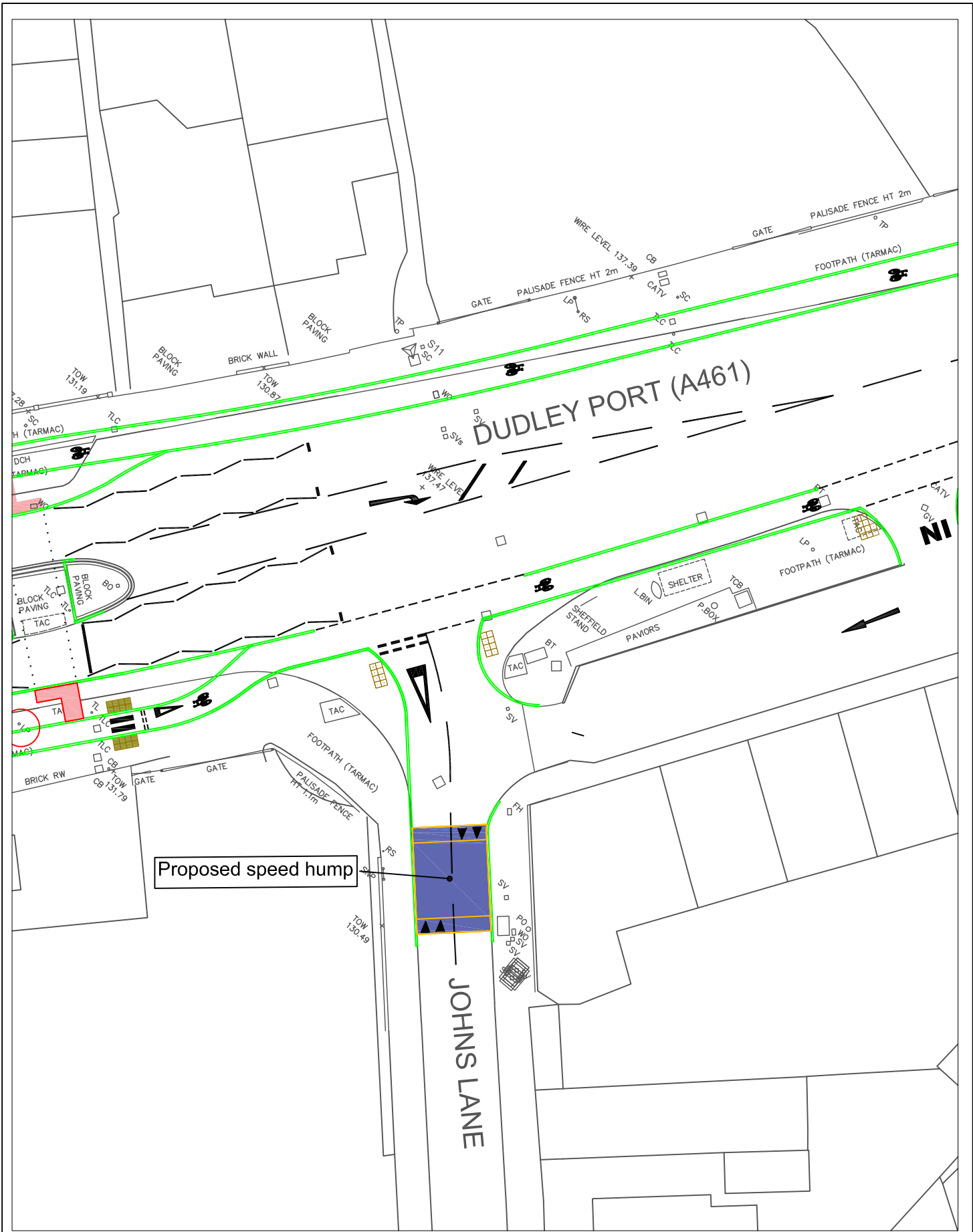
ASSISTANT DIRECTOR HIGHWAYS
 Robin Weare, BSc, C.Eng, M.I.C.E, MBA.
 Sandwell Council House
 Freeth Street Oldbury
 West Midlands B69 3DE
 E-mail: Highways@sandwell.gov.uk

ACTIVE TRAVEL FUND 3 - PEAKE DRIVE TO GREAT BRIDGE, TIPTON
PROPOSED SPEED HUMPS - HEATH CLOSE

N
 ↑

© Crown copyright and database rights 2012
 Ordnance Survey Licence No 100032119

SCALE	N.T.S.
DATE	Oct 23
ISSUED BY	Assistant Director - Highways
DRAWING No	54,824 S/4 (3:16)
DRAWN BY	S.S.



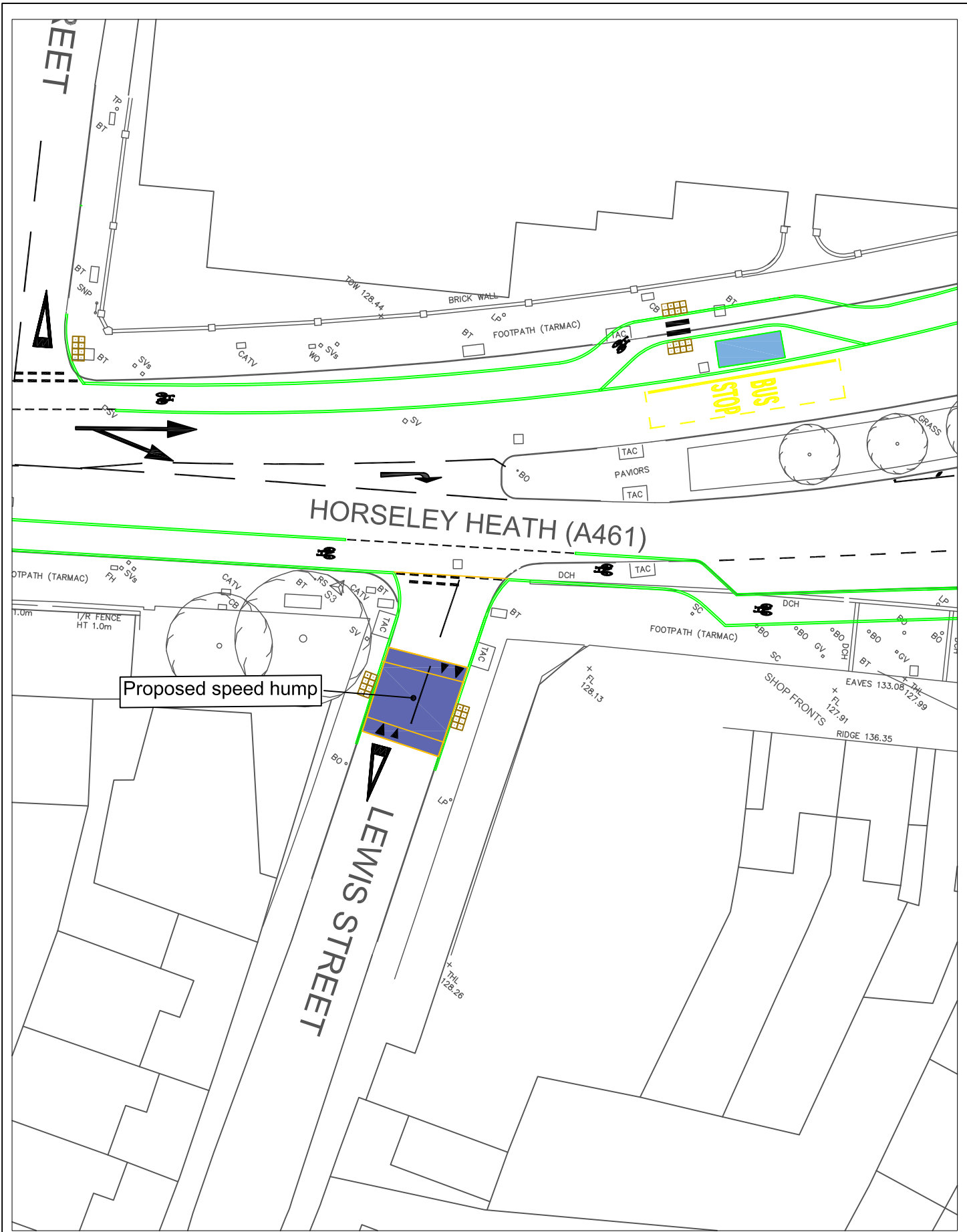


ASSISTANT DIRECTOR HIGHWAYS
 Robin Weare, BSc, C.Eng, M.I.C.E, MBA.
 Sandwell Council House
 Freeth Street Oldbury
 West Midlands B69 3DE
 E-mail: Highways@sandwell.gov.uk

ACTIVE TRAVEL FUND 3 - PEAKE DRIVE TO GREAT BRIDGE, TIPTON
PROPOSED SPEED HUMPS - JOHN'S LANE

© Crown copyright and database rights 2012
 Ordnance Survey Licence No 100032119

SCALE	N.T.S.
DATE	Oct 23
ISSUED BY	Assistant Director - Highways
DRAWING No	54,824 S/4 (2:16)
DRAWN BY	S.S.



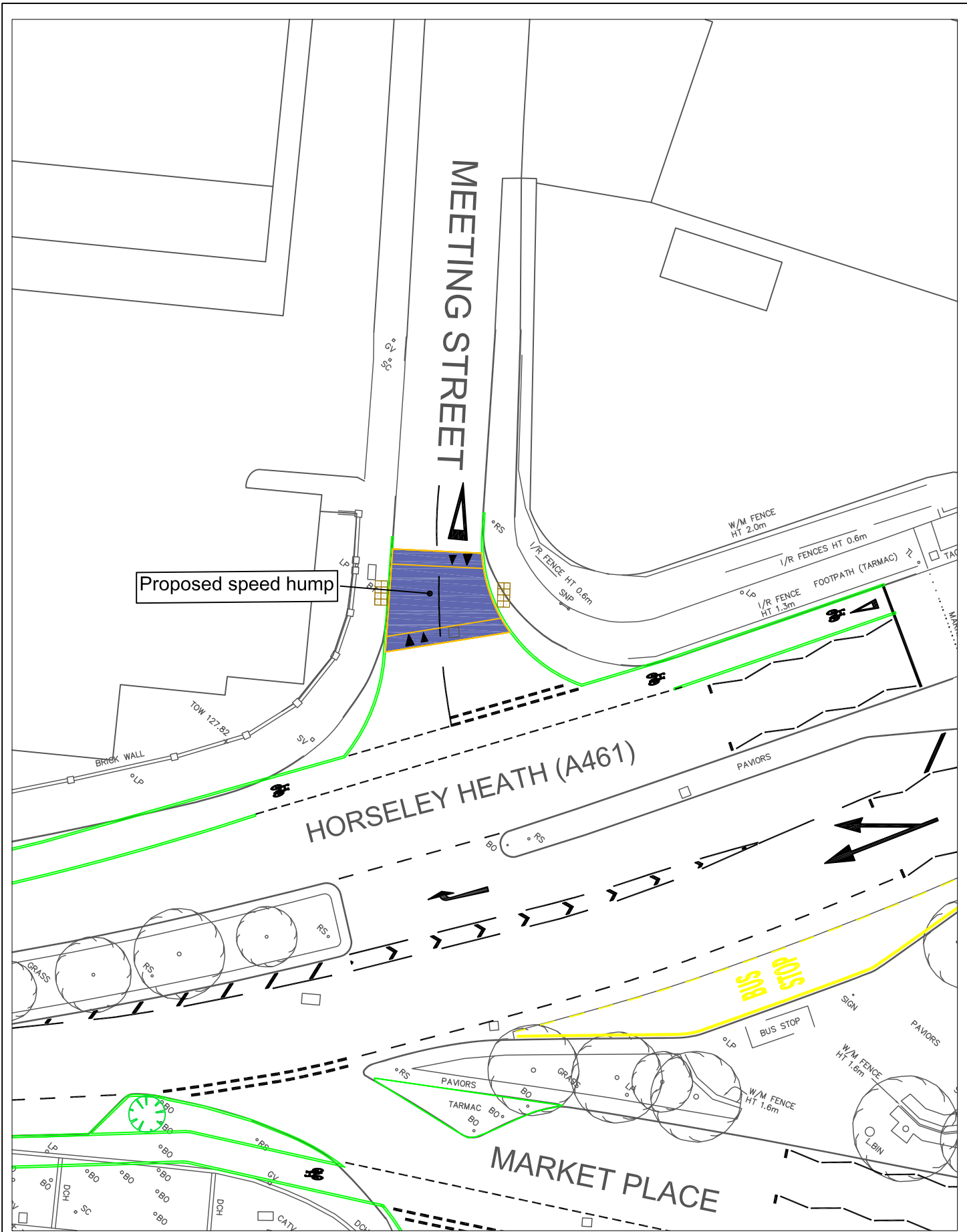


ASSISTANT DIRECTOR HIGHWAYS
 Robin Weare, BSc, C.Eng, M.I.C.E, MBA.
 Sandwell Council House
 Freeth Street Oldbury
 West Midlands B69 3DE
 E-mail: Highways@sandwell.gov.uk

ACTIVE TRAVEL FUND 3 - PEAKE DRIVE TO GREAT BRIDGE, TIPTON
PROPOSED SPEED HUMPS- LEWIS STREET

© Crown copyright and database rights 2012
 Ordnance Survey Licence No 100032119

SCALE	N.T.S.
DATE	Oct 23
ISSUED BY	Assistant Director - Highways
DRAWING No	54,824 S/4 14:16)
DRAWN BY	S.S.



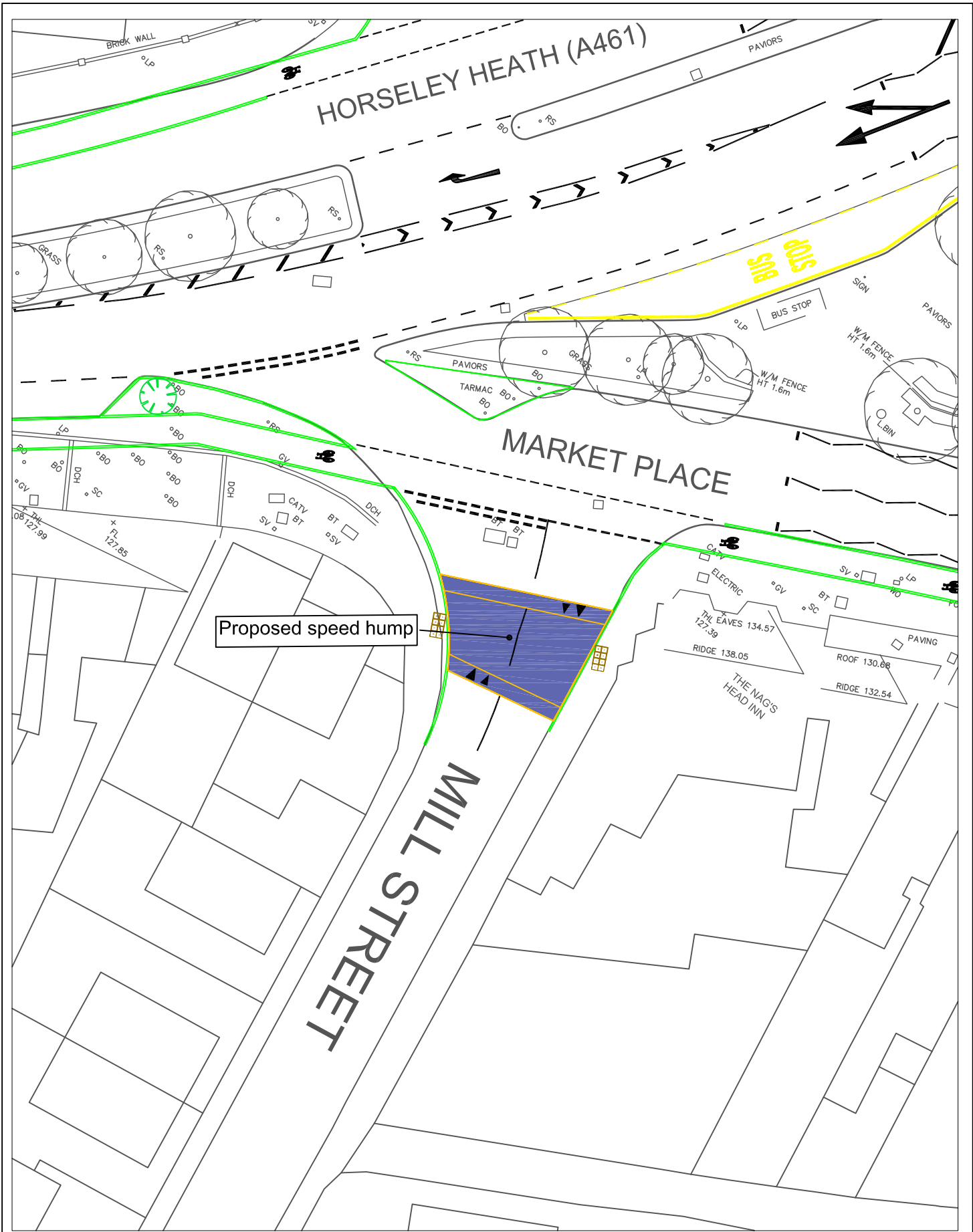


ASSISTANT DIRECTOR HIGHWAYS
 Robin Weare, BSc, C.Eng, M.I.C.E, MBA.
 Sandwell Council House
 Freeth Street Oldbury
 West Midlands B69 3DE
 E-mail: Highways@sandwell.gov.uk

ACTIVE TRAVEL FUND 3 - PEAKE DRIVE TO GREAT BRIDGE, TIPTON
PROPOSED SPEED HUMP - MEETING STREET

© Crown copyright and database rights 2012
 Ordnance Survey Licence No 100032119

SCALE	N.T.S.
DATE	Oct 23
ISSUED BY	Assistant Director - Highways
DRAWING No	54,824 S/4 16:16)
DRAWN BY	S.S.



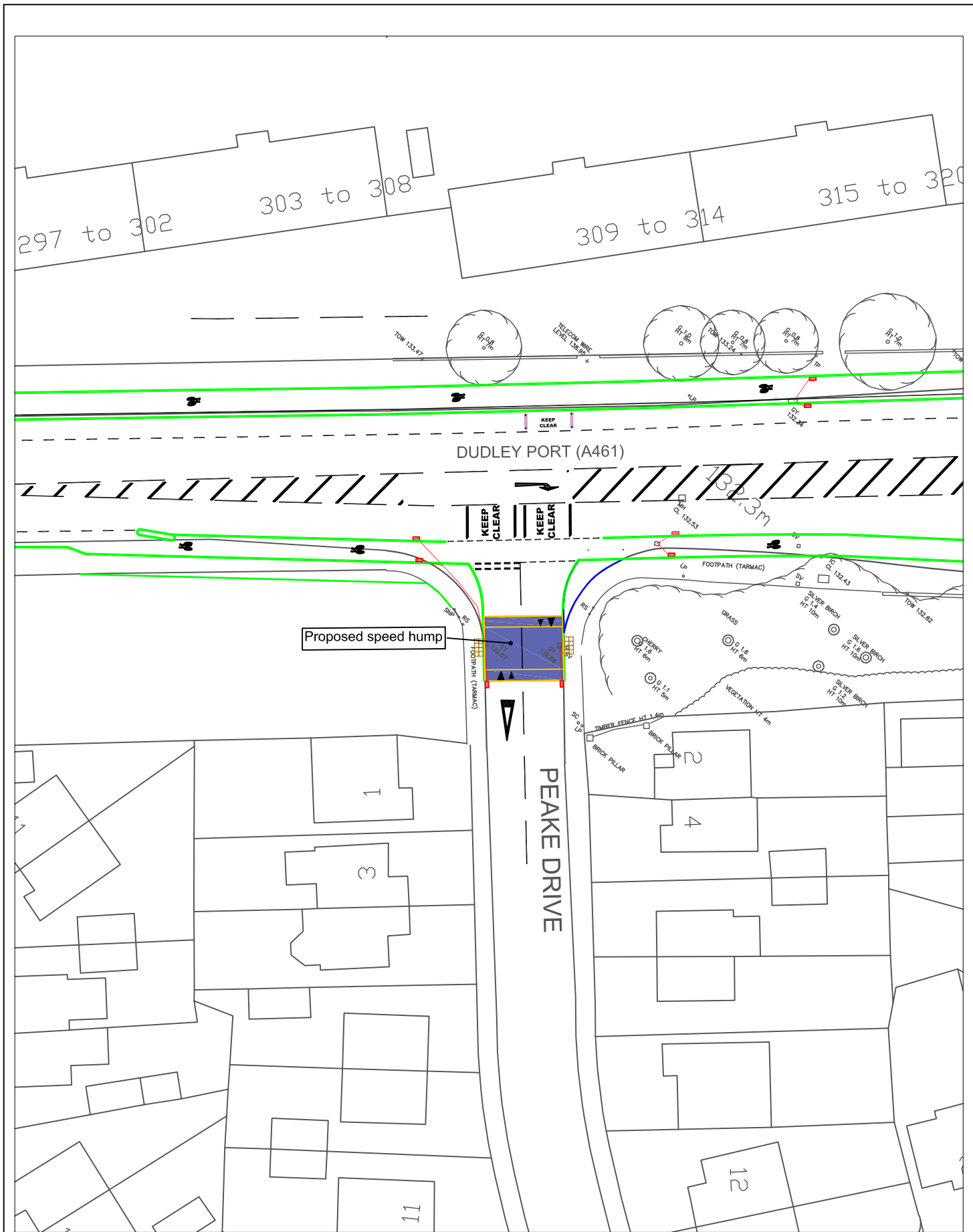


ASSISTANT DIRECTOR HIGHWAYS
 Robin Weare, BSc, C.Eng, M.I.C.E, MBA.
 Sandwell Council House
 Freeth Street Oldbury
 West Midlands B69 3DE
 E-mail: Highways@sandwell.gov.uk

**ACTIVE TRAVEL FUND 3 - PEAKE DRIVE TO
 GREAT BRIDGE, TIPTON
 PROPOSED SPEED HUMPS - MILL STREET**

© Crown copyright and database rights 2012
 Ordnance Survey Licence No 100032119

SCALE	N.T.S.
DATE	Oct 23
ISSUED BY	Assistant Director - Highways
DRAWING No	54,824 S/4 15:16)
DRAWN BY	S.S.



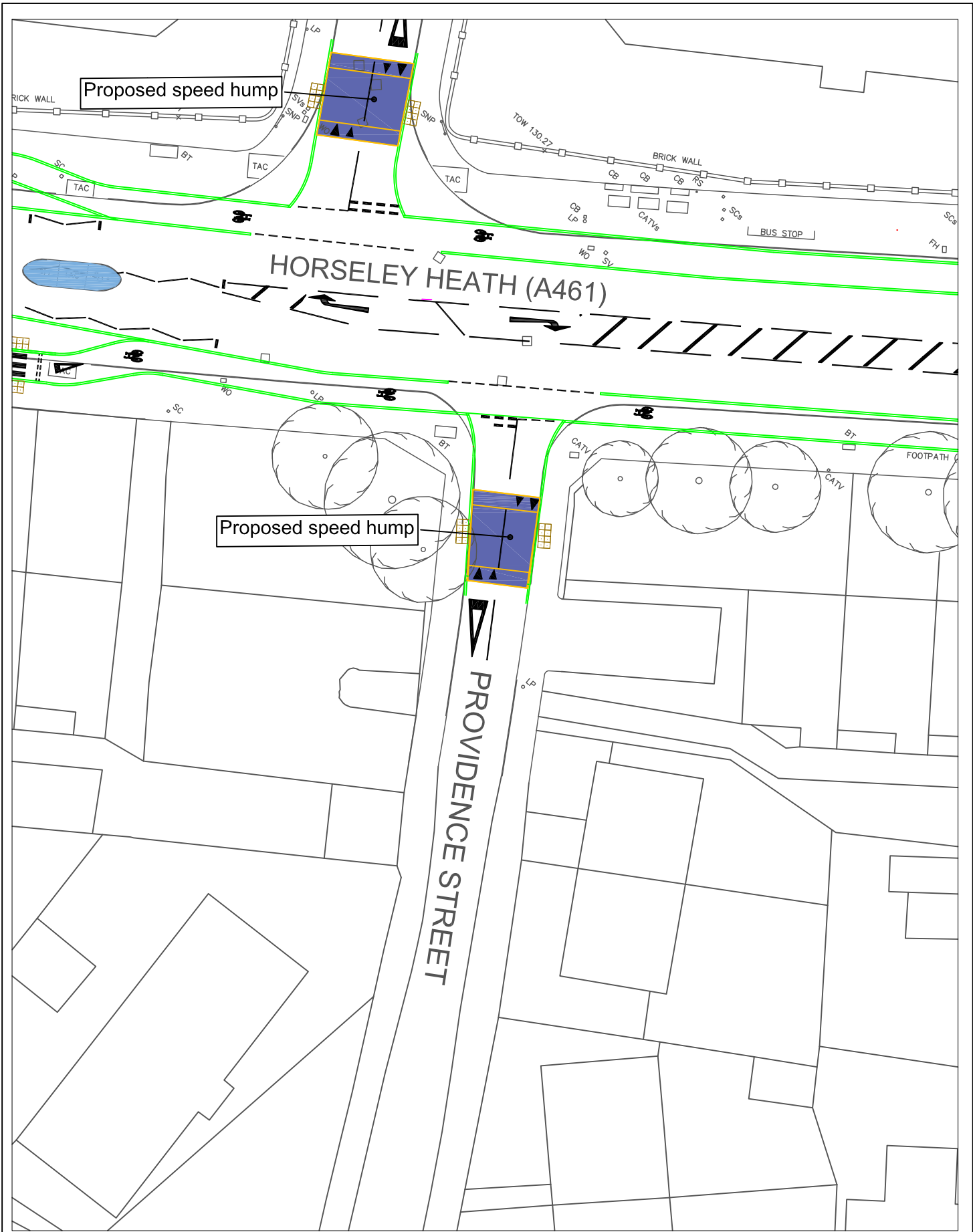


ASSISTANT DIRECTOR HIGHWAYS
 Robin Weare, BSc, C.Eng, M.I.C.E., MBA.
 Sandwell Council House
 Freeth Street Oldbury
 West Midlands B69 3DE
 E-mail: Highways@sandwell.gov.uk

ACTIVE TRAVEL FUND 3 - PEAKE DRIVE TO GREAT BRIDGE, TIPTON
PROPOSED SPEED HUMP - PEAKE DRIVE

© Crown copyright and database rights 2012
 Ordnance Survey Licence No 100032119

SCALE	N.T.S.
DATE	Oct 23
ISSUED BY	Assistant Director - Highways
DRAWING No	54,824 S/4 (1:16)
DRAWN BY	S.S.

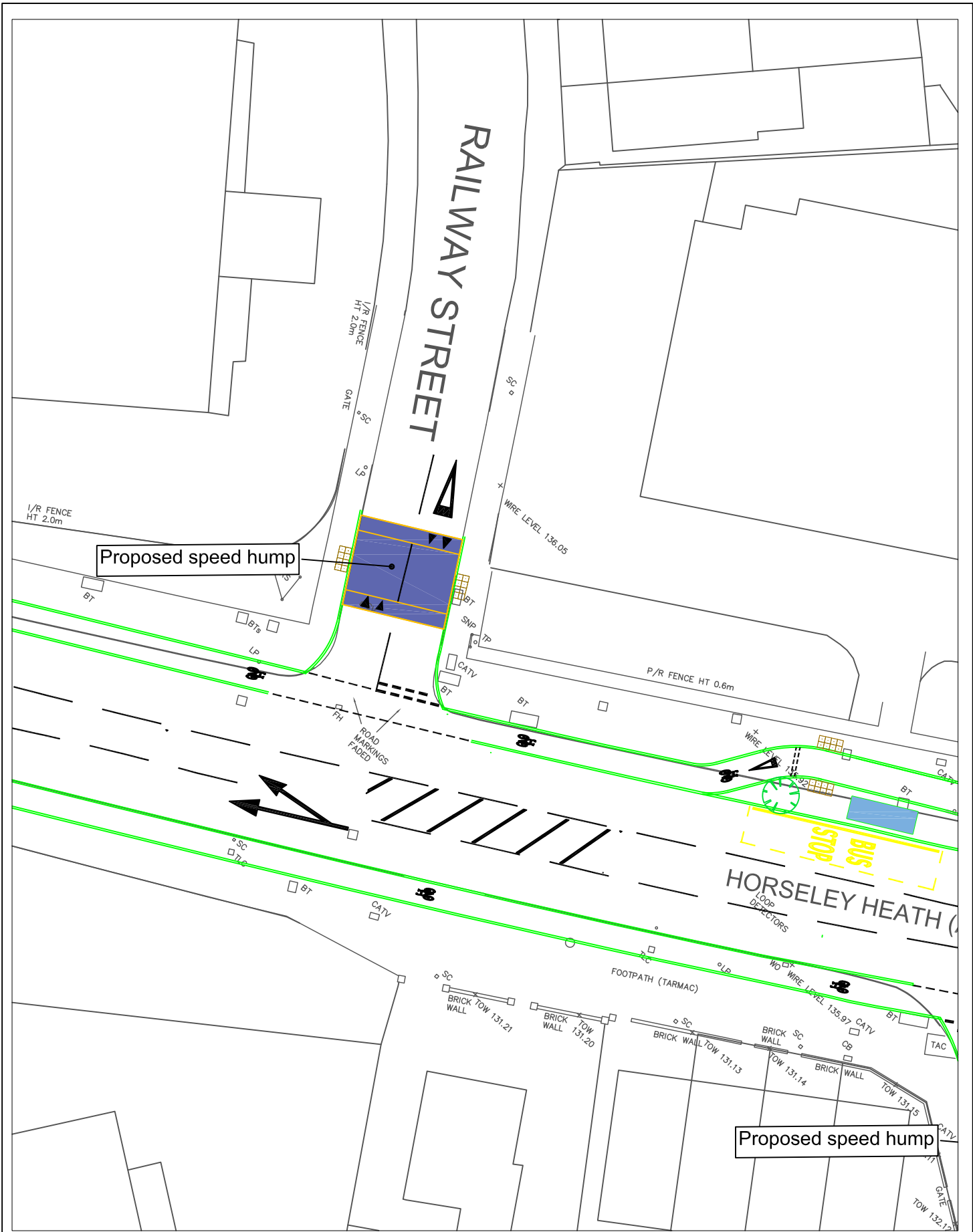




ASSISTANT DIRECTOR HIGHWAYS
 Robin Weare, BSc, C.Eng, M.I.C.E, MBA.
 Sandwell Council House
 Freeth Street Oldbury
 West Midlands B69 3DE
 E-mail: Highways@sandwell.gov.uk

ACTIVE TRAVEL FUND 3 - PEAKE DRIVE TO GREAT BRIDGE, TIPTON
PROPOSED SPEED HUMP - PROVIDENCE STREET

SCALE	N.T.S.
DATE	Oct 23
ISSUED BY	Assistant Director - Highways
DRAWING No	54,824 S/4 12:16)
DRAWN BY	S.S.



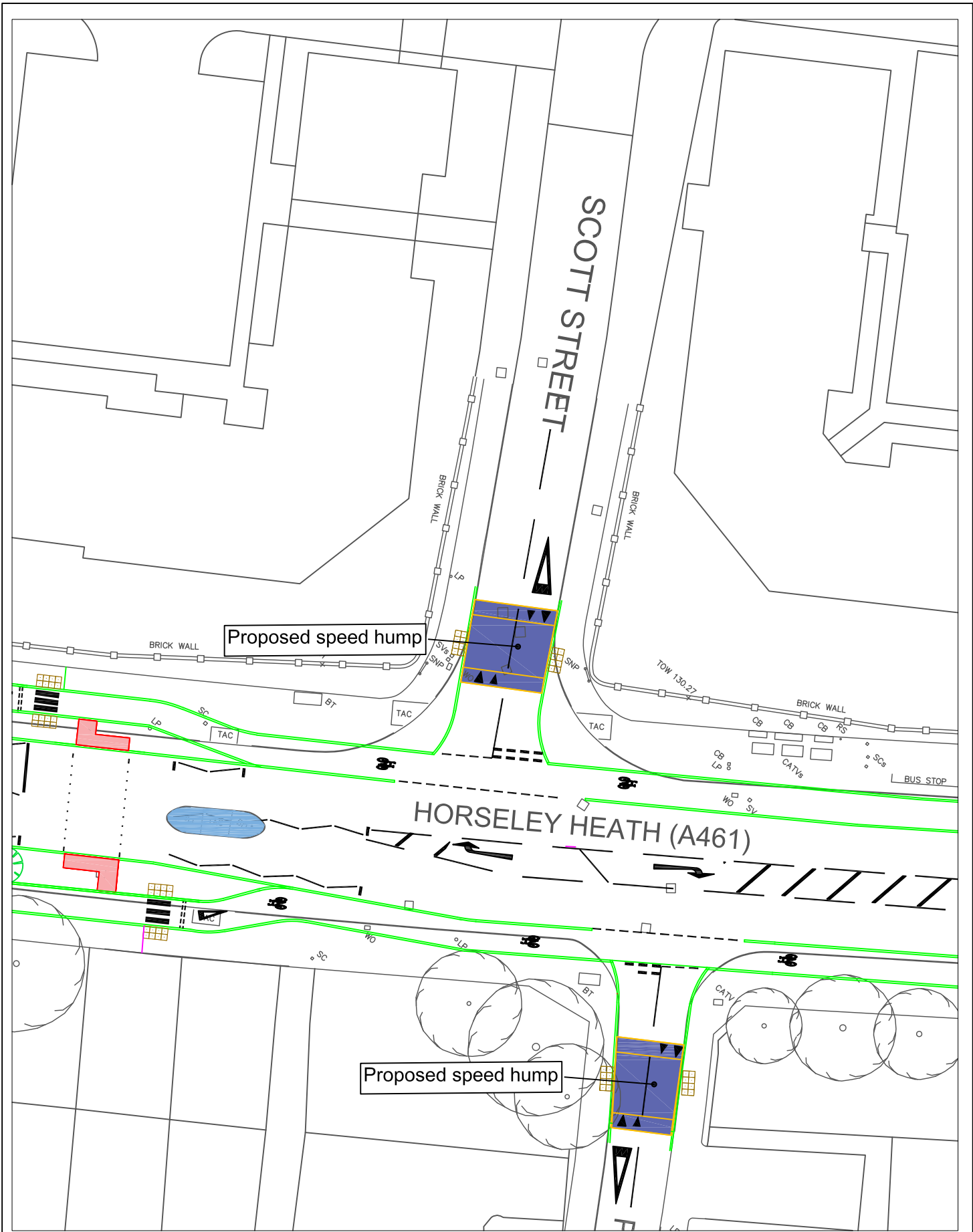


ASSISTANT DIRECTOR HIGHWAYS
 Robin Weare, BSc, C.Eng, M.I.C.E, MBA.
 Sandwell Council House
 Freeth Street Oldbury
 West Midlands B69 3DE
 E-mail: Highways@sandwell.gov.uk

ACTIVE TRAVEL FUND 3 - PEAKE DRIVE TO GREAT BRIDGE, TIPTON
PROPOSED SPEED HUMP - RAILWAY STREET

© Crown copyright and database rights 2012
 Ordnance Survey Licence No 100032119

SCALE	N.T.S.
DATE	Oct 23
ISSUED BY	Assistant Director - Highways
DRAWING No	54,824 S/4 8:16)
DRAWN BY	S.S.



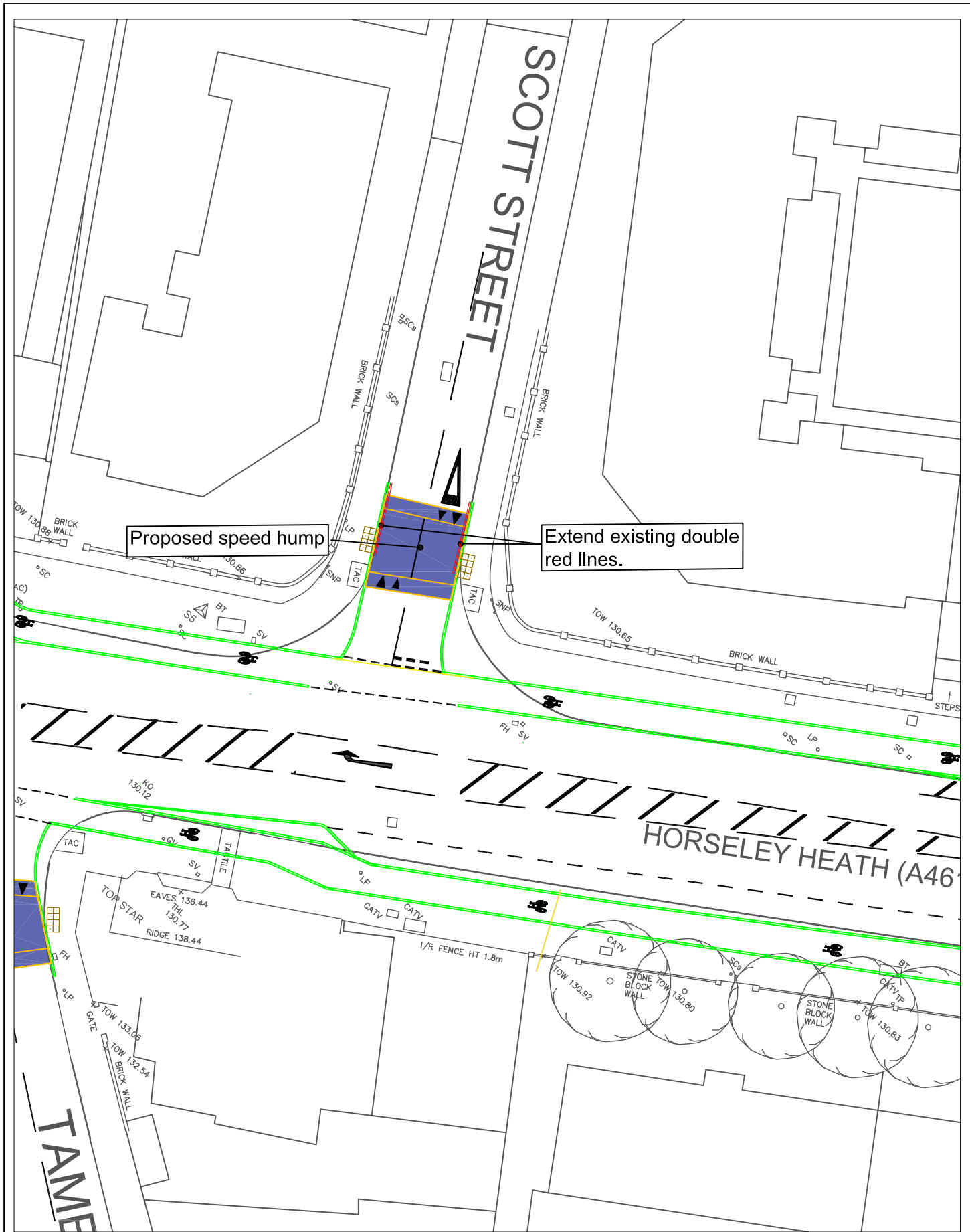


ASSISTANT DIRECTOR HIGHWAYS
 Robin Weare, BSc, C.Eng, M.I.C.E, MBA.
 Sandwell Council House
 Freeth Street Oldbury
 West Midlands B69 3DE
 E-mail: Highways@sandwell.gov.uk

ACTIVE TRAVEL FUND 3 - PEAKE DRIVE TO GREAT BRIDGE, TIPTON
PROPOSED SPEED HUMP - SCOTT ROAD (E)

© Crown copyright and database rights 2012
 Ordnance Survey Licence No 100032119

SCALE	N.T.S.
DATE	Oct 23
ISSUED BY	Assistant Director - Highways
DRAWING No	54,824 S/4 11:16)
DRAWN BY	S.S.



ASSISTANT DIRECTOR HIGHWAYS

Robin Weare, BSc, C.Eng, M.I.C.E, MBA.
Sandwell Council House
Freeth Street Oldbury
West Midlands B69 3DE

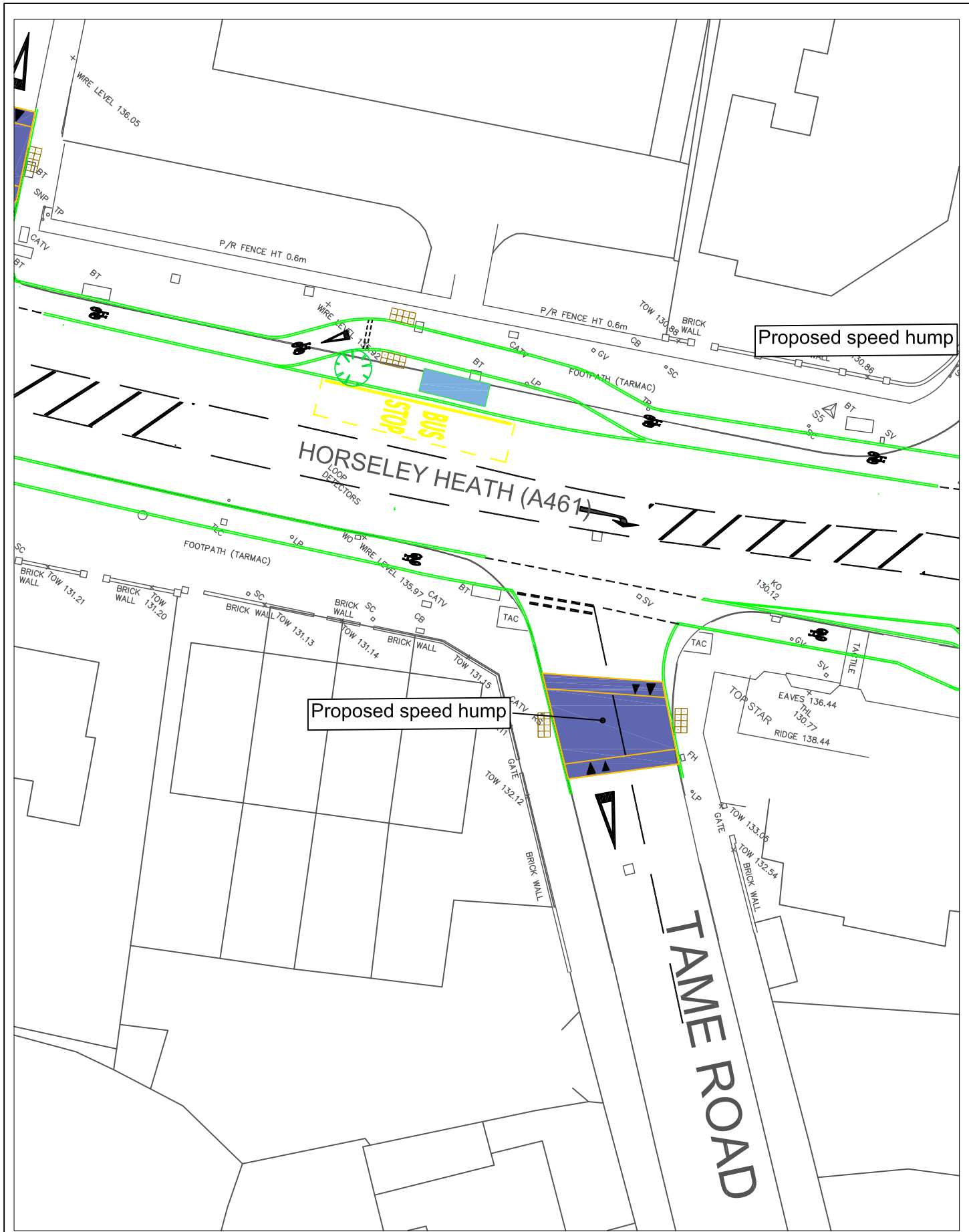
E-mail: Highways@sandwell.gov.uk

ACTIVE TRAVEL FUND 3 - PEAKE DRIVE TO GREAT BRIDGE, TIPTON
PROPOSED SPEED HUMP & PARKING RESTRICTIONS - SCOTT ROAD (w)

© Crown copyright and database rights 2012
Ordnance Survey Licence No 100032119



SCALE	N.T.S.
DATE	Oct 23
ISSUED BY	Assistant Director - Highways
DRAWING No	54,824 S/4 10:16)
DRAWN BY	S.S.



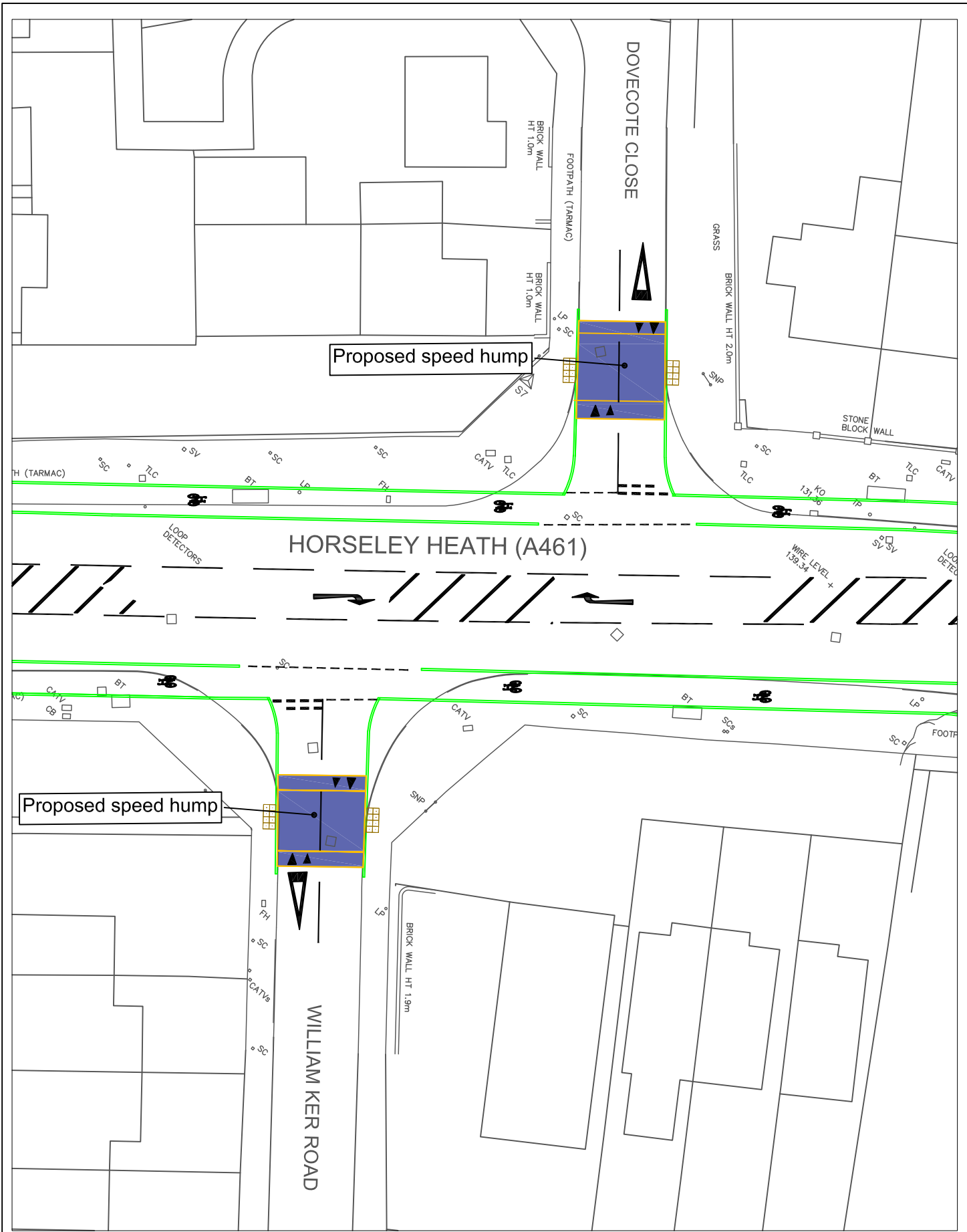


ASSISTANT DIRECTOR HIGHWAYS
 Robin Weare, BSc, C.Eng, M.I.C.E, MBA.
 Sandwell Council House
 Freeth Street Oldbury
 West Midlands B69 3DE
 E-mail: Highways@sandwell.gov.uk

ACTIVE TRAVEL FUND 3 - PEAKE DRIVE TO GREAT BRIDGE, TIPTON
PROPOSED SPEED HUMP - TAME ROAD

© Crown copyright and database rights 2012
 Ordnance Survey Licence No 100032119

SCALE	N.T.S.
DATE	Oct 23
ISSUED BY	Assistant Director - Highways
DRAWING No	54,824 S/4 9:16)
DRAWN BY	S.S.



Sandwell
Metropolitan Borough Council

ASSISTANT DIRECTOR HIGHWAYS

Robin Weare, BSc, C.Eng, M.I.C.E, MBA.
Sandwell Council House
Freeth Street Oldbury
West Midlands B69 3DE

E-mail: Highways@sandwell.gov.uk

ACTIVE TRAVEL FUND 3 - PEAKE DRIVE TO GREAT BRIDGE, TIPTON

PROPOSED SPEED HUMP- WILLIAM KER ROAD & DOVECOTE CLOSE

© Crown copyright and database rights 2012
Ordnance Survey Licence No 100032119

SCALE	N.T.S.
DATE	Oct 23
ISSUED BY	Assistant Director - Highways
DRAWING No	54,824 S/4 (5/6:16)
DRAWN BY	S.S.