

# **Fire Risk Assessment**

## **Newlands Green 1-37,2-36.**

### **Smethwick**

### **B66 4LL.**



**Date Completed:** 4th April 2024

**Review Period:** 3 years

**Officer:** Anthony Smith **Fire Risk Assessor**

**Checked By:** J Blewitt **Team Lead Fire Safety & Facilities**

**Current Risk Rating = Tolerable**

**Subsequent reviews**

<u>Review date</u>	<u>Officer</u>	<u>Comments</u>

---

## Contents

<a href="#">Section 0</a>	<b>Introduction</b>	
<a href="#">Section 1</a>	<b>Significant Findings (executive summary)</b>	
<a href="#">Section 2</a>	<b>People at Significant Risk of Fire</b>	
<a href="#">Section 3</a>	<b>Contact Details</b>	
<a href="#">Section 4</a>	<b>Description of Premises</b>	
<a href="#">Section 5</a>	<b>Building Plan</b>	
<a href="#">Section 6</a>	<b>External Envelope</b>	
<a href="#">Section 7</a>	<b>Means of Escape from Fire</b>	
<a href="#">Section 8</a>	<b>Fire Detection and Alarm Systems</b>	
<a href="#">Section 9</a>	<b>Emergency Lighting</b>	
<a href="#">Section 10</a>	<b>Compartmentation</b>	
<a href="#">Section 11</a>	<b>Fire Fighting Equipment</b>	
<a href="#">Section 12</a>	<b>Fire Signage</b>	
<a href="#">Section 13</a>	<b>Employee Training</b>	
<a href="#">Section 14</a>	<b>Sources of Ignition</b>	
<a href="#">Section 15</a>	<b>Waste Control</b>	
<a href="#">Section 16</a>	<b>Control and Supervision of Contractors and Visitors</b>	
<a href="#">Section 17</a>	<b>Arson Prevention</b>	
<a href="#">Section 18</a>	<b>Storage Arrangements</b>	
<a href="#">Section 19</a>	<b>Additional Control Measures; Fire Risk Assessment – Level 2 Action Plan</b>	
<a href="#">Appendix 1</a>	<b>Significant Hazards on Site and Information to be provided for the Fire Service Risk Rating of Block</b>	

---

## Section

# 0

## Introduction

---

The [Regulatory Reform \(Fire Safety\) Order 2005 \(RR\(FS\)O\)](#) places a legal duty on landlords to complete a fire risk assessment (FRA). Specifically, RR(FS)O article 9. — (1) *“The responsible person must make a suitable and sufficient assessment of the risks to which relevant persons are exposed for the purpose of identifying the general fire precautions he needs to take to comply with the requirements and prohibitions imposed on him by or under this Order”*.

This fire risk assessment has been written to comply fully with the above legislation which is enforced locally by West Midlands Fire Service. If required, complaints can be made to them by telephone on 0121 380 7500 or electronically on <https://www.wmfs.net/our-services/fire-safety/#reportfiresafety>. In the first instance however, we would be grateful if you could contact us directly via [https://www.sandwell.gov.uk/info/200195/contact\\_the\\_council/283/feedb ack\\_and\\_complaints](https://www.sandwell.gov.uk/info/200195/contact_the_council/283/feedback_and_complaints) or by phone on 0121 569 6000.

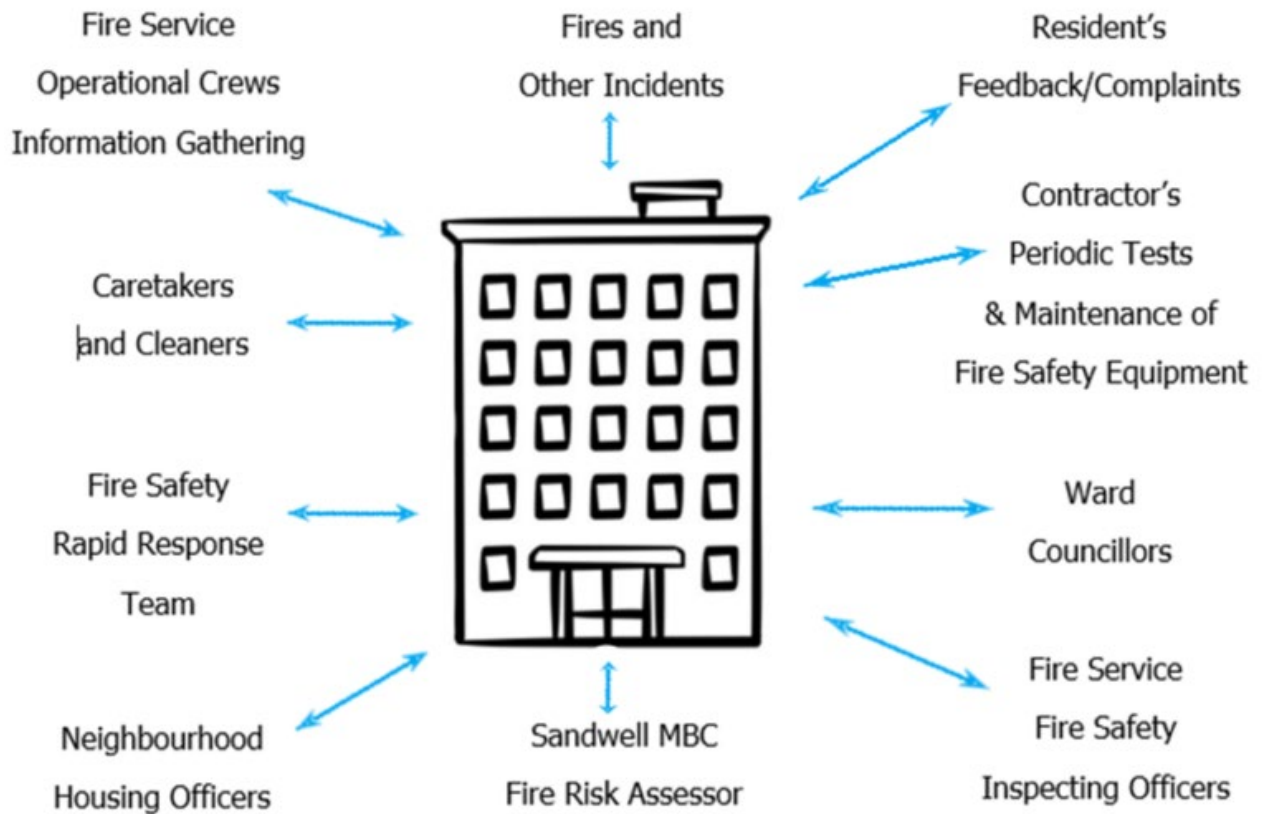
The date of the fire risk assessment is on the front page, followed by any subsequent reviews. A recurring time frame is not set in legislation, but the Council will as a minimum review:

- High Risk Residential Buildings annually
- Other Buildings every 3 years

The council has procedures and policies in place that will trigger a review of the fire risk assessment. This then is recorded on the fire risk assessment. If the review suggests the fire risk assessment is not currently suitable and sufficient, then a new fire risk assessment will be undertaken and become the current fire risk assessment. The previous fire risk assessment will be retained in the building safety case for that building.

The following diagrams illustrate those procedures and persons that support the effective planning, organisation, control, monitoring and review of the preventive and protective measures. This information is provided as required under the RR(FS)O.

---

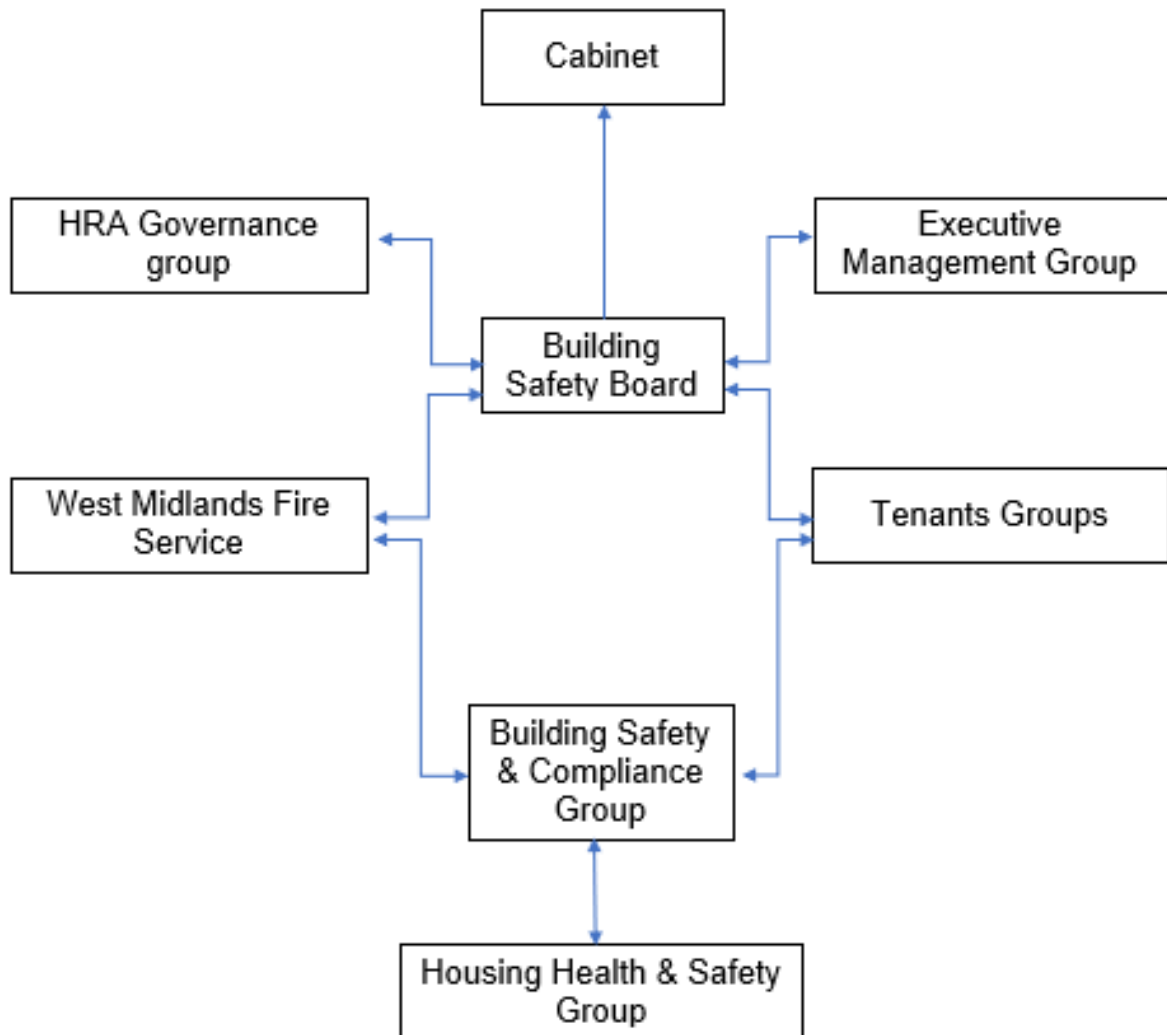


The above processes and procedures are overseen by the Fire Safety, Manager who reports to the Head of Building Safety

These managers attend the Building Safety and Compliance Group for scrutiny which is part of the governance structure below.

---

Governance Structure



To summarise the fire risk assessment, in this scenario the RR(FS)O requires the prescribed information to be recorded. The prescribed information is the significant findings of the fire risk assessment and those groups or persons especially at risk from fire. This is recorded here in [section 1](#). Also required to be recorded under article 11, are the fire safety arrangements for the planning, organisation, control, monitoring and review of the preventative and protective measures. The information shown above is part of this requirement.

---

## Section

## 1

## Significant findings

The significant findings (executive summary) of the fire risk assessment include those measures that have been or will be undertaken by the responsible person in order to comply with the RR(FS)O 2005.

Groups of people especially at risk of fire include such people as remote or lone workers, at risk due to layout of the building, visitors and contractors unfamiliar with the building layout as well as those with physical, sensory or mental health issues.

A third requirement that under the order must be recorded is the fire safety arrangements. This is the effective planning, organisation, control, monitoring and review of the preventive and protective measures. These are shown in the introduction.

### **Significant findings**

*Include a brief summary of protective and preventative measures where relevant along with any issues found;*

The escape strategy is '**Stay Put Unless**'. This means in the event of a fire in your flat you should evacuate. If there is a fire elsewhere in the building you should stay put unless you are affected by fire, smoke or you have been advised by the emergency services to leave.

Section number	Section Area	Individual Risk Level
<a href="#">Section 6</a>	<p><b>External Envelope</b></p> <p>Each façade of the building comprises of traditional brick masonry.</p> <p>Individual flat windows and those to communal areas are UPVC double glazed units.</p>	Trivial
<a href="#">Section 7</a>	<p><b>Means of Escape from Fire</b></p> <p>Each premise has a single staircase and final exit.</p>	Trivial

<a href="#">Section 8</a>	<p><b>Fire Detection and Alarm Systems</b></p> <p>Flats have a fire detection system fitted to an LD3 standard.</p>	Trivial
<a href="#">Section 9</a>	<p><b>Emergency Lighting</b></p> <p>Emergency lighting is located within escape stairs and communal corridors.</p>	Trivial
<a href="#">Section 10</a>	<p><b>Compartmentation</b></p> <p>The blocks have sufficient compartmentation between dwellings.</p> <p>Individual flat entrance doors are predominately Permadoor FD30s fire doors.</p>	Trivial
<a href="#">Section 11</a>	<p><b>Fire Fighting Equipment</b></p> <p>The premises have no provision for firefighting equipment.</p>	Trivial
<a href="#">Section 12</a>	<p><b>Fire Signage</b></p> <p>Due to simplicity of layout no requirement for fire signage.</p>	Trivial
<a href="#">Section 13</a>	<p><b>Employee Training</b></p> <p>All staff receive basic fire safety awareness training.</p>	Trivial
<a href="#">Section 14</a>	<p><b>Sources of Ignition</b></p>	Tolerable



	The last test date for the fixed electrical installation could not be established at the time of the Fire Risk Assessment.	
<a href="#">Section 15</a>	<p><b>Waste Control</b></p> <p>Refuse containers are emptied regularly.</p> <p>There is a regular cleaning service to the premises.</p>	Trivial
<a href="#">Section 16</a>	<p><b>Control and Supervision of Contractors and Visitors</b></p> <p>Contractors are controlled centrally, and hot works permits are required where necessary.</p>	Trivial
<a href="#">Section 17</a>	<p><b>Arson Prevention</b></p> <p>No current evidence of arson.</p> <p>External lighting is in place.</p>	Trivial
<a href="#">Section 18</a>	<p><b>Storage Arrangements</b></p> <p>Residents instructed not to bring L.P.G cylinders into block.</p>	Trivial

### Risk Level Indicator

The following simple risk level estimator is based on commonly used risk level estimator:

Likelihood of fire	Potential consequences of fire		
	Slight harm	Moderate harm	Extreme harm
Low	Trivial risk	Tolerable risk	Moderate risk
Medium	Tolerable risk	Moderate risk	Substantial risk
High	Moderate risk	Substantial risk	Intolerable risk

Considering the fire prevention measures observed at the time of this risk assessment, it is considered that the hazard from fire (likelihood of fire) at these premises is:

Low  Medium  High

In this context, a definition of the above terms is as follows:

**Low** Unusually low likelihood of fire because of negligible potential sources of ignition.

**Medium** Normal fire hazards (e.g., potential ignition sources) for this type of occupancy, with fire hazards generally subject to appropriate controls (other than minor shortcomings).

**High** Lack of adequate controls applied to one or more significant fire hazards, such as to result in significant increase in likelihood of fire.

Considering the nature of the premises and the occupants, as well as the fire protection and procedural arrangements observed at the time of this fire risk assessment, it is considered that the consequences for life safety in the event of fire would be:

---

Slight Harm  Moderate Harm  Extreme Harm

In this context, a definition of the above terms is as follows:

<b>Slight harm</b>	Outbreak of fire unlikely to result in serious injury or death of any occupant (other than an occupant sleeping in a room in which a fire occurs).
<b>Moderate harm</b>	Outbreak of fire could foreseeably result in injury including serious injury) of one or more occupants, but it is unlikely to involve multiple fatalities.
<b>Extreme harm</b>	Significant potential for serious injury or death of one or more occupants.

Accordingly, it is considered that the risk to life from fire at these premises is:

Trivial  Tolerable  Moderate  Substantial  Intolerable

## Comments

In conclusion, the likelihood of fire is at a medium level of risk prior to the implementation of the action plan because of the presence of normal fire hazards for this type of occupancy which have all been highlighted within the fire risk assessment.

After considering the use of the premise and the occupants the consequences for life safety in the event of a fire would be slight harm.

This is due to there being a Stay Put Unless policy and sufficient compartmentation to include predominately Permadoor FD30s doors to flat entrances combined with suitable smoke detection to LD3 standard within flats.

---

Overall, the level of risk at the time of this FRA is Tolerable.

A suitable risk-based control plan should involve effort and urgency that is proportional to risk. The following risk-based control plan is based on one that has been advocated for general health and safety risks:

<b>Risk level</b>	<b>Action and timescale</b>
<b>Trivial</b>	No action is required, and no detailed records need to be kept.
<b>Tolerable</b>	No major additional fire precautions required. However, there might be a need for reasonably practicable improvements that involve minor or limited cost.
<b>Moderate</b>	It is essential that efforts are made to reduce the risk. Risk reduction measures, which should take cost into account, should be implemented within a defined time period. Where moderate risk is associated with consequences that constitute extreme harm, further assessment might be required to establish more precisely the likelihood of harm as a basis for determining the priority for improved control measures.
<b>Substantial</b>	Considerable resources might have to be allocated to reduce the risk. If the premises are unoccupied, it should not be occupied until the risk has been reduced. If the premises are occupied, urgent action should be taken.
<b>Intolerable</b>	Premises (or relevant area) should not be occupied until the risk is reduced.

***(Note that, although the purpose of this section is to place the fire risk in context, the above approach to fire risk assessment is subjective and for guidance only. All hazards and deficiencies identified in this report should be addressed by implementing all recommendations contained in the following action plan. The fire risk assessment should be reviewed regularly.)***

---

## Section

# 2

## People at Significant Risk of Fire

---

Persons at significant risk of fire does not just refer to those people with physical, sensory or mental health issues. It also includes those at risk due to the layout or features of the building such as inner rooms or dead-end conditions. Persons may also be at risk due to remote or lone working.

The RR(FS)O requires that these people are identified in any fire risk assessment.

Sandwell Council takes the health, safety and wellbeing of its colleagues, contractors, residents and leaseholders seriously. It is our policy to exceed, where possible, the minimum health and safety requirements of the law.

Residents are responsible for letting us know whether they might need a Personal Emergency Evacuation Plan (PEEP). The Resident Engagement Officers (Fire Safety) will conduct an assessment visit upon request. Any risk-reduction measures that are found where a PEEP is necessary and completed will be documented and taken quickly. With the consent of the resident, we will make a referral for West Midlands Fire Service to conduct a Safe and Well visit.

When a PEEP is in place, the relevant information will be kept in the secure Premise Information Box (High Rise Buildings only), which is set up to help WMFS in an emergency. The data is classified as level 1, which means it complies with the General Data Protection Regulations.

---

## Section

# 3

## Contact Details

---

The Chief Executive of Sandwell Metropolitan Borough Council has ultimate responsibility for the site as the responsible person identified by the RR(FS)O 2005.

The Chief Executive has put a structure in place to support the management of the site.

This includes the role of Building Safety Manager who has duties as defined within the Regulatory Reform (Fire Safety) Order 2005.

The contact names to support the management of the site are as follows:

### **Chief Executive**

Shokat Lal

### **Interim Director of Housing**

Dean Epton

### **Assistant Director Building Compliance**

Phil Deery

### **Fire Safety Manager**

Tony Thompson

### **Team Lead Fire Safety**

Jason Blewitt

### **Fire Risk Assessor(s)**

Carl Hill

Louis Conway

Anthony Smith

Adrian Jones

### **Resident Engagement Officer - Fire Safety**

Lee Mlilo

Abdul Monim Khan

### **Housing Office Manager**

Susan Geddes

*Please note, the above details are correct at the time of the production of the risk assessment and may be subject to change*

---

## Section 4

### Description of Premises

Newlands Green  
1-37, 2-36  
Smethwick  
B66 4LL

#### Description of the Property

The property was built in 1952 of traditional brick and is 4 storeys inclusive of ground floor. There is vehicle access via an arched passageway on Newlands Green.

The blocks are a mixture of flats and maisonettes accessed from the ground floor and 3 “open” deck accesses.

There is no access to the roof from communal areas. There is a chute system present for each block with hoppers on the 1<sup>st</sup>, 2<sup>nd</sup> and 3<sup>rd</sup> floors.

The communal, any workplace areas and the external envelope of the building are subject to the Regulatory Reform (Fire Safety) Order 2005 as confirmed by the Fire Safety Act 2021.

The enforcing authority is West Midlands Fire Service.

High/Low Rise	Low Rise
Number of Floors	4
Date of Construction	1952
Construction Type	Traditional brick cavity
Last Refurbished	Unknown
External Cladding	None
Number of Lifts	None
Number of Staircases	1 per block
Automatic Smoke Ventilation to communal area	No
Fire Alarm System	No
Refuse Chute	Yes x 2
Access to Roof	No access from communal areas.

Equipment on roof (e.g., mobile phone station etc)	None
----------------------------------------------------	------

**Persons at Risk**

Residents / Occupants of 20 flats and 8 maisonettes.

Visitors,

Sandwell MBC employees,

Contractors,

Service providers (e.g., meter readers, delivery people etc)

Statutory bodies (e.g., W.M.F.S, Police, and Ambulance)

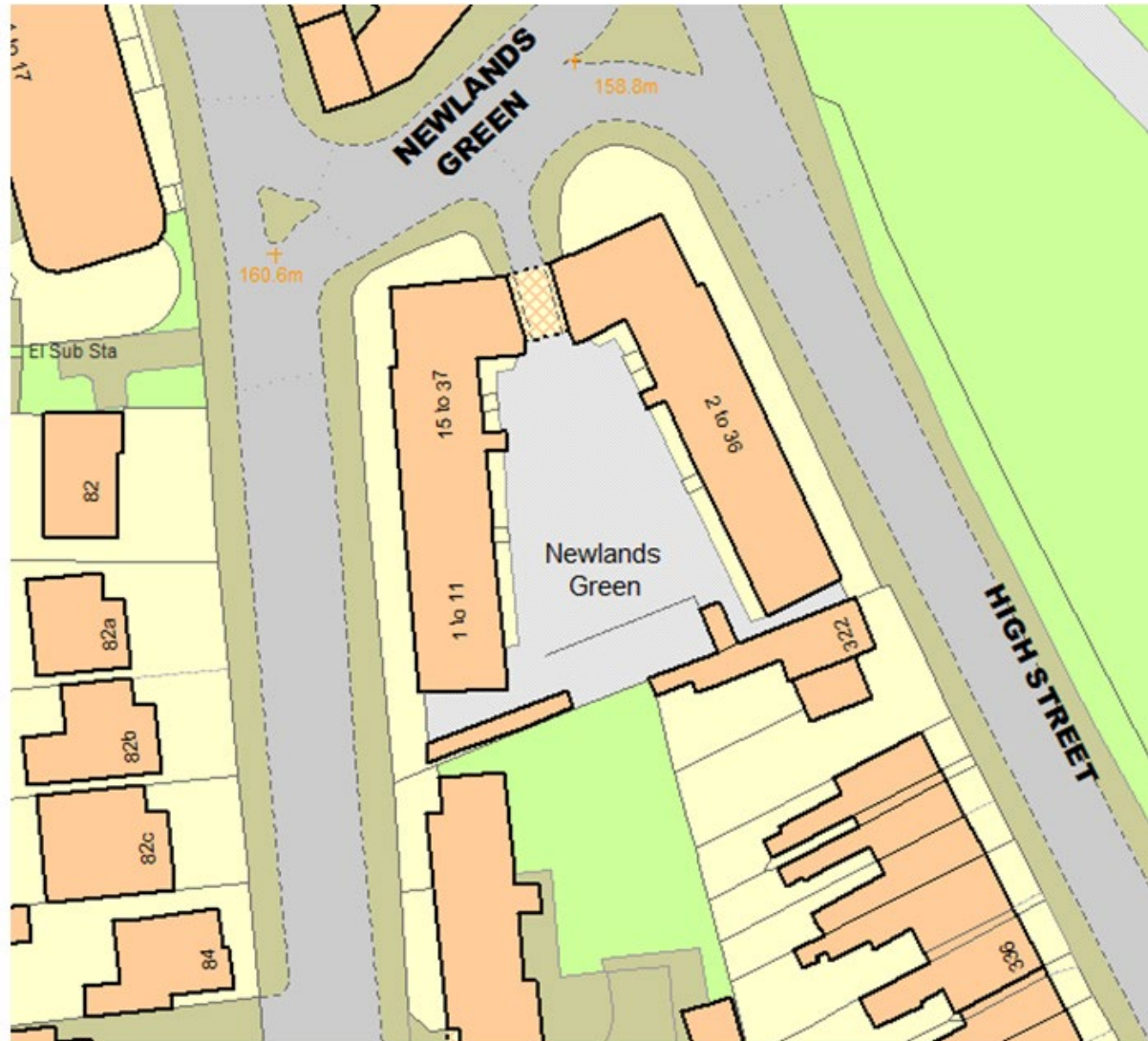
---



Section  
**5**

**Building Plan**

General plan which outlines the buildings footprint.



## Section 6

### External envelope

Following the introduction of the Fire Safety Act 2021, consideration needs to be given to the external envelope of the building for any fire risk. This predominantly means the external wall construction including any insulation filler. It also includes balconies and any other fixtures as well as doors and windows.

Below is a breakdown of the materials used within the external envelope and, as part of the external wall system.

It is deemed that the combination and application of these materials presents an acceptable level of fire risk.

- 1) The exterior of the buildings is predominantly traditional brick construction with concrete access decks.



- 2) Individual communal windows to the stairs are open without any window frames/glazing installed. Flats have UPVC windows.



3) Front entrance doors are Permadoor.



4) The block has a pitched concrete tiled roof.



## Section

# 7

## Means of Escape from Fire

---

- 1) Each of the blocks has a single staircase, the width is 1000 mm. Two staircases in total. Staircase is permanently ventilated as no window or doors present.



- 2) The means of escape are protected to prevent the spread of fire and smoke with predominately Permadoor FD30s doors. No internal access to flats was gained during the fire risk assessment. Residents to flats 26 and 34 did allow an inspection of the flat entrance doors. Both doors have self-closing devices. Residents confirmed smoke detection provision (not inspected).



- 3) Brickwork, on external escape route, is approx. 1050mm to bottom of window. This is deemed acceptable for a person to crouch and pass the window. Please note a stay put unless strategy applies to this building.
-



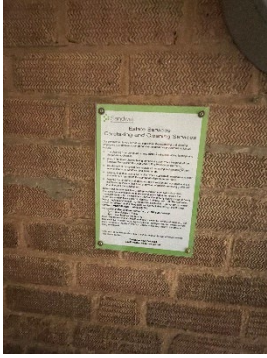
- 4) Electric and gas meter cupboards are timber construction. It is recommended that during the next future works programme these cupboards are replaced with fire resisting construction providing 30 minutes fire resistance.



- 5) Automatic smoke ventilation is not employed. This is acceptable as decks are open to air. Both staircases also have permanent ventilation as no doors/ windows fitted within openings.



- 6) Communal areas are kept free of flammable items. The communal areas are checked on a regular basis by Janitorial/ Cleaning teams. There is also an out of hours service that allows combustible items of furniture / rubbish to be removed.
-



*Good housekeeping is fundamental to reducing risk in blocks of flats. Controlling the presence of combustibile materials and ignition sources not only reduces the potential for accidental fires to start and develop in the common parts, it also significantly reduces the scope for deliberate fires. It also ensures escape routes are free of obstructions that might hinder the evacuation of people from the building and access for fire-fighters.*

- 7) Emergency lighting is provided to the communal landings and stairs.



- 8) The building has sufficient passive controls that provide effective compartmentation in order to support a Stay Put-Unless Policy. Therefore, residents are advised to remain in their flat unless the fire directly affects them or if they are advised to evacuate by the emergency services.

**Section**

**8**

---

## **Fire Detection and Alarm Systems**

---

- 1) Early warning is limited to hard wire or battery smoke alarms within each of the resident's flats. The equipment is subjected to a cyclical test.
- 2) Based on the previous fire risk assessment the smoke alarms within residents' flats are installed to an LD3 standard. No access was gained during this fire risk assessment. However, residents to flats 26 and 34 confirmed LD3 standard.

*For information*

*LD1 all rooms except wet rooms*

*LD2 all-risk rooms e.g., Living Room, Kitchens and Hallway.*

*LD3 Hallway only*

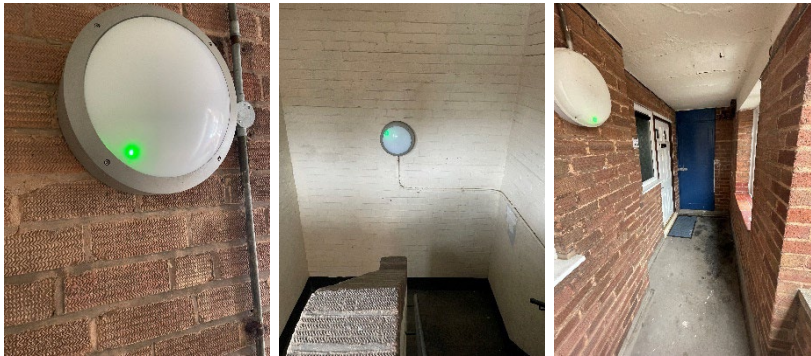
- 3) There is no effective means for detecting an outbreak of fire to communal areas in the remaining blocks. The reason for this is:
  - I. Such systems may get vandalised.
  - II. False alarms would occur.
  - III. A Stay Put - Unless policy is in place.

Section

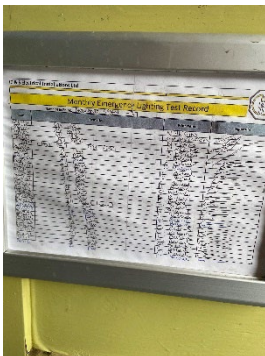
9

Emergency Lighting

- 1) The premises has a sufficient emergency / escape lighting system in accordance with BS 5266 and has test points strategically located.



- 2) The self-contained units are provided to the communal landings and stairs.
- 3) All installed equipment is checked and tested on a monthly basis by Sandwell MBC in house electrical team or approved contractor, in accordance with current standards.





**Section**  
**10**

---

## **Compartmentation**

---

*This section should be read in conjunction with Section 4*

- 1) The building is designed to provide as a minimum 1-hour vertical fire resistance and 30 minutes horizontal fire resistance. This is not possible in communal areas due to the open plan staircase.
  - 2) The premises do not have sufficient compartmentation to limit the travel and effect of smoke and flame in event of a fire in communal areas due to the open plan staircase.
  - 3) A variety of methods / materials have been used to achieve fire-stopping including Rockwool, fire rated sponge and intumescent pillows.
  - 4) The fire stopping / compartmentation is subject to an annual check by the Fire Safety Rapid Response Team.
  - 5) Any remedial works arising from the fire stopping / compartmentation check(s) will be actioned immediately by the Fire Safety Rapid Response Team.
-

# Fire Risk Assessment

## Block 2-36

Electrical																																						
		Fire Stopping Materials					Fire Stopping Materials					Fire Stopping Materials					Fire Stopping Materials																					
Floor No		Supalux	Inu Batt	Inu Sponge	Inu AM Mastic	Graphite Filler	Inu Pads	Inu Pillows	Inu Wraps	Rockwool	Supalux	Inu Batt	Inu Sponge	Inu AM Mastic	Graphite Filler	Inu Pads	Inu Pillows	Inu Wraps	Rockwool	Supalux	Inu Batt	Inu Sponge	Inu AM Mastic	Graphite Filler	Inu Pads	Inu Pillows	Inu Wraps	Rockwool	Supalux	Inu Batt	Inu Sponge	Inu AM Mastic	Graphite Filler	Inu Pads	Inu Pillows	Inu Wraps	Rockwool	Floor No
B																																						B
G				✓																																		G
1				✓																																		1
2				✓																																		2
3																																						3
4																																						4
5																																						5
6																																						6
7																																						7
8																																						8
9																																						9
10																																						10
11																																						11
12																																						12
13																																						13
14																																						14
15																																						15
16																																						16
		Communal doors free from defects	✓	Communal lift doors free from defects		✓	Flat doors free from defects		✓	Communal cupboards & locks & doors secure		✓	Communal areas free from tenants stored items		✓	Communal areas free from repair materials		✓																				
<b>Foam Removal &amp; Enhancement Record</b>										<b>Foam, Enhancements &amp; Other Comments:</b>																												
Foam Present But Not Removed This Visit																																						
Foam Present & Partially Removed This Visit																																						
Foam Present & Fully Removed This Visit																																						
No Foam Present										✓																												
No Enhancement Carried Out This Visit										✓																												
Enhancement Carried Out This Visit																																						

## Block 1-37

Floor No	Electrical															Floor No																			
	Fire Stopping Materials					Fire Stopping Materials					Fire Stopping Materials						Fire Stopping Materials																		
	Supalux	Intu Batt	Intu Sponge	Intu AM Mastic	Graphite Filler	Intu Pads	Intu Pillars	Intu Weaps	Rockwool	Supalux	Intu Batt	Intu Sponge	Intu AM Mastic	Graphite Filler	Intu Pads	Intu Pillars	Intu Weaps	Rockwool	Supalux	Intu Batt	Intu Sponge	Intu AM Mastic	Graphite Filler	Intu Pads	Intu Pillars	Intu Weaps	Rockwool								
B																											B								
G																												G							
1																												1							
2																												2							
3																												3							
4																												4							
5																												5							
6																												6							
7																												7							
8																												8							
9																												9							
10																												10							
11																												11							
12																												12							
13																												13							
14																												14							
15																												15							
16																												16							
Communal doors free from defects					✓	Communal windows free from defects					✓	Flat doors free from defects					✓	Communal cupboards locked and secure					✓	Communal areas free from tenants stored items					✓	Communal areas free from repairs materials					✓
<b>Foam Removal &amp; Enhancement Record</b>															<b>Foam, Enhancements &amp; Other Comments:</b>																				
Foam Present But Not Removed This Visit																																			
Foam Present & Partially Removed This Visit																																			
Foam Present & Fully Removed This Visit																																			
No Foam Present																																			
No Enhancement Carried Out This Visit																																			
Enhancement Carried Out This Visit																																			

6) Individual flat doors are predominantly Permadoor FD30s rated fire doors.

Refer to updated door spreadsheet below.

Newlands Green 1-37 (O)	BL34420NE35	BL34420NE35	1-37 Newlands Green (O);Smethwick;West Midlands;;	Intentionally Blank
Newlands Green 1-37 (O)	BL34420NE35	DW3442000001	1 Newlands Green;Smethwick;West Midlands;;	Permadoor Glazed
Newlands Green 1-37 (O)	BL34420NE35	DW3442000003	3 Newlands Green;Smethwick;West Midlands;;	Composite Not Glazed
Newlands Green 1-37 (O)	BL34420NE35	DW3442000005	5 Newlands Green;Smethwick;West Midlands;;	Permadoor Glazed
Newlands Green 1-37 (O)	BL34420NE35	DW3442000007	7 Newlands Green;Smethwick;West Midlands;;	Permadoor Glazed
Newlands Green 1-37 (O)	BL34420NE35	DW3442000009	9 Newlands Green;Smethwick;West Midlands;;	Permadoor Glazed
Newlands Green 1-37 (O)	BL34420NE35	DW3442000011	11 Newlands Green;Smethwick;West Midlands;;	Composite Glazed
Newlands Green 1-37 (O)	BL34420NE35	DW3442000014	15 Newlands Green;Smethwick;West Midlands;;	Permadoor Glazed
Newlands Green 1-37 (O)	BL34420NE35	DW3442000016	17 Newlands Green;Smethwick;West Midlands;;	Permadoor Glazed
Newlands Green 1-37 (O)	BL34420NE35	DW3442000018	19 Newlands Green;Smethwick;West Midlands;;	Permadoor Glazed
Newlands Green 1-37 (O)	BL34420NE35	DW3442000020	21 Newlands Green;Smethwick;West Midlands;;	Permadoor Glazed
Newlands Green 1-37 (O)	BL34420NE35	DW3442000022	23 Newlands Green;Smethwick;West Midlands;;	Permadoor Glazed
Newlands Green 1-37 (O)	BL34420NE35	DW3442000024	25 Newlands Green;Smethwick;West Midlands;;	Permadoor Glazed
Newlands Green 1-37 (O)	BL34420NE35	DW3442000026	27 Newlands Green;Smethwick;West Midlands;;	Permadoor Glazed
Newlands Green 1-37 (O)	BL34420NE35	DW3442000028	29 Newlands Green;Smethwick;West Midlands;;	Permadoor Glazed
Newlands Green 1-37 (O)	BL34420NE35	DW3442000030	31 Newlands Green;Smethwick;West Midlands;;	Permadoor Glazed
Newlands Green 1-37 (O)	BL34420NE35	DW3442000032	33 Newlands Green;Smethwick;West Midlands;;	Permadoor Glazed
Newlands Green 1-37 (O)	BL34420NE35	DW3442000034	35 Newlands Green;Smethwick;West Midlands;;	Permadoor Glazed
Newlands Green 1-37 (O)	BL34420NE35	DW3442000036	37 Newlands Green;Smethwick;West Midlands;;	Composite Glazed
Newlands Green 2-36 (E)	BL34420NE36	BL34420NE36	2-36 Newlands Green (E);Smethwick;West Midlands;;	Intentionally Blank
Newlands Green 2-36 (E)	BL34420NE36	DW3442000002	2 Newlands Green;Smethwick;West Midlands;;	Permadoor Glazed
Newlands Green 2-36 (E)	BL34420NE36	DW3442000004	4 Newlands Green;Smethwick;West Midlands;;	Composite Glazed
Newlands Green 2-36 (E)	BL34420NE36	DW3442000006	6 Newlands Green;Smethwick;West Midlands;;	Permadoor Glazed
Newlands Green 2-36 (E)	BL34420NE36	DW3442000008	8 Newlands Green;Smethwick;West Midlands;;	Permadoor Glazed
Newlands Green 2-36 (E)	BL34420NE36	DW3442000010	10 Newlands Green;Smethwick;West Midlands;;	Permadoor Glazed
Newlands Green 2-36 (E)	BL34420NE36	DW3442000012	12 Newlands Green;Smethwick;West Midlands;;	Permadoor Glazed
Newlands Green 2-36 (E)	BL34420NE36	DW3442000013	14 Newlands Green;Smethwick;West Midlands;;	Permadoor Glazed
Newlands Green 2-36 (E)	BL34420NE36	DW3442000015	16 Newlands Green;Smethwick;West Midlands;;	Permadoor Glazed
Newlands Green 2-36 (E)	BL34420NE36	DW3442000017	18 Newlands Green;Smethwick;West Midlands;;	Permadoor Glazed
Newlands Green 2-36 (E)	BL34420NE36	DW3442000019	20 Newlands Green;Smethwick;West Midlands;;	Permadoor Glazed
Newlands Green 2-36 (E)	BL34420NE36	DW3442000021	22 Newlands Green;Smethwick;West Midlands;;	Permadoor Glazed
Newlands Green 2-36 (E)	BL34420NE36	DW3442000023	24 Newlands Green;Smethwick;West Midlands;;	Composite Glazed
Newlands Green 2-36 (E)	BL34420NE36	DW3442000025	26 Newlands Green;Smethwick;West Midlands;;	Permadoor Glazed
Newlands Green 2-36 (E)	BL34420NE36	DW3442000027	28 Newlands Green;Smethwick;West Midlands;;	Permadoor Glazed
Newlands Green 2-36 (E)	BL34420NE36	DW3442000029	30 Newlands Green;Smethwick;West Midlands;;	Permadoor Glazed
Newlands Green 2-36 (E)	BL34420NE36	DW3442000031	32 Newlands Green;Smethwick;West Midlands;;	Permadoor Glazed
Newlands Green 2-36 (E)	BL34420NE36	DW3442000033	34 Newlands Green;Smethwick;West Midlands;;	Permadoor Glazed
Newlands Green 2-36 (E)	BL34420NE36	DW3442000035	36 Newlands Green;Smethwick;West Midlands;;	Permadoor Glazed



- 7) There is no means of access to the internal roof space from the common areas.

---

## Section 11

## Fire Fighting Equipment

---

- 1) The premise has no provision for firefighting equipment.

---

## Section 12

## Fire Signage

---

- 1) Fire Action Notices are not displayed throughout the building. The signs are not necessary due to the building not having a complex layout.
  - 2) Smoking is prohibited within any communal parts of the building in line with Smoke Free England Legislation.
  - 3) Yellow LPG warning signs are not displayed.
-

**Section  
13**

**Employee & Resident  
Training/Provision of Information**

- 1) All Caretaking / Cleaning Employees have undertaken fire safety training. This includes use of bespoke 'Fire Safety in High / Low Rise Flatted Accommodation' Video.
- 2) All employees are encouraged to complete 'In the line of fire' training on an annual basis.
- 3) Caretaking Teams are not currently trained in the effective use of fire extinguishers. Caretaking Teams are not expected to tackle fires in this area.
- 4) Staff undertaking fire risk assessments are qualified to or working towards Level 4 Diploma in Fire Safety.
- 5) Fire safety information has been provided as part of tenancy pack.
- 6) Information regarding use of fire doors is provided to residents.



- 7) Information regarding the Stay Put unless fire evacuation strategy is provided to residents.



Section

14

---

## Sources of Ignition

---

- 1) Smoking is prohibited within any communal parts of the building in line with Smoke Free England legislation.
  - 2) Hot working is not normally carried out. If essential maintenance requires the use of hot work processes, then corporate policies and procedures are to be followed.
  - 3) Portable electrical equipment used as part of the Caretaking / Cleaning regime is subject to annual PAT Testing. This information is held by the Estate Services Manager Bryan Low.
  - 4) **The fixed electrical installation shall be tested every 5 years. At the time of the Fire Risk Assessment, it was not possible to ascertain the date of the last test.**
  - 5) Portable heaters are not allowed in any common parts of the premises.
  - 6) Gas appliances and pipework (where installed) are subject to annual testing and certification. This cyclical contract is managed by the in-house Gas Team. Gas meters and pipework to flats is external to the building.
-

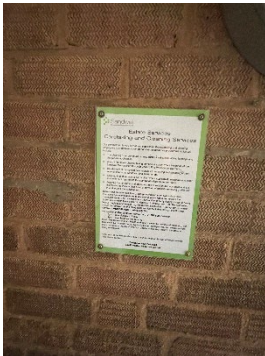
**Section  
15**

---

**Waste Control**

---

- 1) There is a regular cleaning service to the premises.
- 2) Regular checks by Caretakers minimise risk of waste accumulation.



- 3) There is an 'Out of Hours' service in place to remove bulk items.
-

**Section  
16**

---

## **Control and Supervision of Contractors and Visitors**

---

- 1) Responsive Repairs service delivered by Sandwell MBC necessitates the production of an order via the computerised repairs system. Details of any known risks are documented on the repair order.
  - 2) Hot works are not permitted unless authorisation is given via the approved officer. The hot works procedure is to be followed.
  - 3) Owing to the nature of Low-Rise flatted accommodation, it is difficult to manage / control individual contractors / utility companies.
  - 4) However, utility companies are not allowed to access any service cupboard or secure area. They must request and collect maintenance keys from the local housing team. This allows scrutiny of what is the scope of any works such as installation of tenant's broadband / phone line etc.
  - 5) Where contractors are appointed to undertake major refurbishment works, Sandwell MBC Urban Design team will put control measures in place. Such Measures include: -
    - a) Pre-Contract Meetings – where contractor is made aware of all working arrangements and safe systems of work to be adopted. Issues covered in this meeting will include:
      - Health and Safety.
      - Site security.
      - Safety of working and impact on children/school business.
      - Fire risk, if any.
      - Site Emergency Plan.
    - b) Monthly Site Meetings – in order to monitor, review and share any new information including any new risks.
    - c) Site monitored daily whilst work is in progress by Clerk of Works / Health and Safety Officers.
-



- d) Final Contractor review on completion of works undertaken.

## Section 17

---

### Arson Prevention

---

- 1) Regular checks are undertaken by Janitorial / Cleaning Teams which helps reduce the risk of arson.
- 2) There is no current evidence of arson.
- 3) The perimeter of the premises is well illuminated.
- 4) There have been no fire related incidents since the previous FRA.

## Section 18

---

### Storage Arrangements

---

- 1) Residents instructed not to bring L.P.G cylinders into block.
  - 2) The tenancy conditions, Section 7 – Condition 5.6 stipulates “If you live in a flat or maisonette, you, people living with you and any visitors to your property must not keep or use paraffin oil, petrol, bottled gas appliances or any other explosive, FLAMMABLE or dangerous material in the property. This restriction also applies to any storage facility situated in or attached to the block, which has been provided for your use.”
  - 3) No Flammable liquids stored on site by Caretakers / cleaners.
  - 4) There are no flammable liquids or gas cylinders stored on site.
-

**Section**  
**19**

**Additional Control Measures;  
Fire Risk Assessment - Level 2  
Action Plan**

---

Significant Findings

**Action Plan**

It is considered that the following recommendations should be implemented to reduce fire risk to, or maintain it at, the following level:

Trivial       Tolerable

Definition of priorities (where applicable):

P1 Arrange and complete as urgent – Within 10 days

P2 Arrange and complete within 1-3 Months of assessment date

P3 Arrange and complete within 3-6 Months of assessment date

P4 Arrange and complete exceeding 6 months under programmed work

---



# Fire Risk Assessment Level 2 Action Plan



Name of Premises or Location:

Newlands Green. Blocks 1-37 and 2-36

Date of Action Plan:

09/04/2024

Review Date:

<Insert date>

Question/ Ref No	Required Action	Supporting photograph	Priority	Timescale and Person Responsible	Date Completed
14/04	Last test date of fixed electrical system to be established. If overdue test required.	No Image.	P3	Electrical Engineers. 3-6 Months.	



## Fire Risk Assessment

---



When undertaking future improvement program(s), it is advised that the observations listed below should be given consideration (noting that the safety of the residents is not jeopardised by these, and all steps to reduce any known risks have been taken).

### Observations

Future works programme should consider encasing the electrical and gas meters with 30 minutes fire resisting construction.



### Signed

	Fire Risk Assessor	Date: 09/04/2024
	Quality Assurance Check	Date: 16/04/2024



## Significant Hazards on Site and Information to be Provided for the Fire Service

Name of property: Newlands Green 1-37 and 2-36


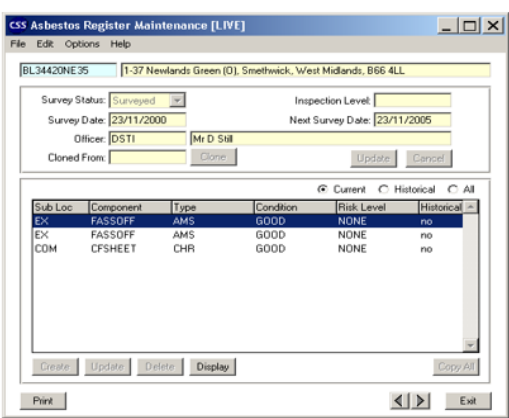

Updated: 06/10/2022

Premise Manager: Tony Thompson

Tel. No.: 0121 569 2975

Hazard	Information/Comments
Asbestos	An asbestos survey has been undertaken of the communal areas. Survey held by Sandwell Housing (Derek Still <a href="tel:01215695077">Tel:- 0121 569 5077</a> ). <i>Include survey</i>


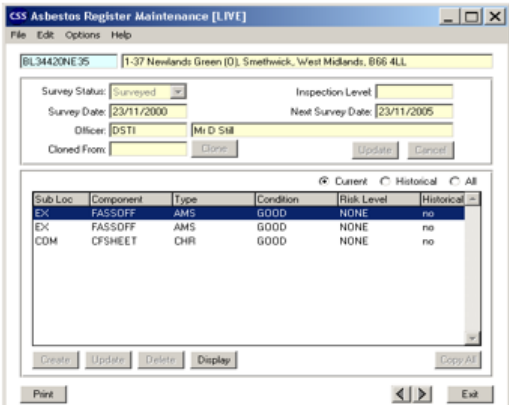

### Block 1-37

<b>Asbestos Survey</b>		Property Address		1-37 Newlands Green, Smethwick, B66 4LL.		Office use <input checked="" type="checkbox"/>	
Surveyed by	Gary Carrington	Date	18/03/14	Checked by	Derek still	Desktop Check	<input checked="" type="checkbox"/>
Reason for request		HSG 264 - Survey Report Type		Date	11/10/2022		
Investment Void		Refurbishment Survey		Property Description			
Investment Tenanted		Management Survey	<input checked="" type="checkbox"/>				
R & M Void		SHAPE Interrogated.	<input checked="" type="checkbox"/>	4 Storey Block			
R & M Tenanted		No Existing SHAPE Data.					
Medical / Emergency - Heating Works		Existing SHAPE Data.	<input checked="" type="checkbox"/>				
Communal Areas	<input checked="" type="checkbox"/>	Refurb Surveys Interrogated ?		Year Built	1952		
				Notes / including details of similar property surveys completed. No access to store cupboards or meter cupboards Revised by G. Carrington – 25/09/18 REVISED BY DAVE JASPER 06/10/2022			
Building Surveyors 0121 569 5077				Asset Team – Investment Division Operations & Development Centre Roway Lane Oldbury B69 3ES			
							

## Fire Risk Assessment

Sample Locations	Property Address 1-37 Newlands Green, Smethwick, B66 4LL.						
LOCATION	MATERIAL	QTY	SURFACE TREATMENT	SAMPLE REF	RESULT	HSE NOTIFY	ACTION TAKEN ON CONTRACT
IF DURING THE COURSE OF WORK SUSPECTED ACM'S ARE IDENTIFIED THAT ARE NOT CONTAINED WITHIN THIS REPORT STOP WORK & SEEK ADVICE							
MAIN VEHICLE ENTANCE TUNNEL CEILING	TEXTURED COATING	-	-	-	-	-	REQUEST SAMPLE IF TO BE DISTURBED
ITEMS SHOWN BELOW HAVE BEEN ASSESSED ON SITE BY THE ASBESTOS SURVEYOR & ARE CONFIRMED NOT TO BE ACM'S.							
LOCATION DESCRIPTION	MATERIAL	LOCATION DESCRIPTION	MATERIAL	LOCATION DESCRIPTION	MATERIAL		
MAIN SOFFITS	UPVC	LANDING METER CUPBOARD ELECTRICS BACKBOARDS	PLYWOOD				
STORE SHED ROOF SHEETS	STEEL	ALL FLAT DOOR FRAME SEALANTS	SILICONE				
BIN STORE ROOFS	MINERAL FELT	ALL COMMUNAL CUPBOARDS DOOR FRAME SEALTS	SILICONE				
LANDING METER CUPBOARD SHELVES	CONCRETE						
LANDING METER CUPBOARD CEILINGS	CONCRETE						

### Block 2-36

<b>Asbestos Survey</b>		Property Address 2-36 Newlands Green, Smethwick, B66 4LL.		Office use <input checked="" type="checkbox"/>	
Surveyed by	Gary Carrington	Date	18/03/14	Checked by	
Reason for request		HSG 264 - Survey Report Type		Date	
Investment Void	<input type="checkbox"/>	Refurbishment Survey	<input type="checkbox"/>	Property Description  4 Storey Block  	
Investment Tenanted	<input type="checkbox"/>	Management Survey	<input checked="" type="checkbox"/>		
R & M Void	<input type="checkbox"/>	SHAPE Interrogated.	<input checked="" type="checkbox"/>		
R & M Tenanted	<input type="checkbox"/>	No Existing SHAPE Data.	<input type="checkbox"/>		
Medical / Emergency - Heating Works	<input type="checkbox"/>	Existing SHAPE Data.	<input checked="" type="checkbox"/>		
Communal Areas	<input checked="" type="checkbox"/>	Refurb Surveys Interrogated?	<input type="checkbox"/>		
				Year Built	1952
				Notes / including details of similar property surveys completed.  No access to store cupboards or meter cupboards  Revised by G. Carrington - 25/09/18  REVISED BY DAVE JASPER 06/10/2022	
Building Surveyors 0121 569 5077				<b>Asset Team – Investment Division</b> Operations & Development Centre Roway Lane Oldbury B69 3ES  	

## Fire Risk Assessment

Sample Locations		Property Address	2-36 Newlands Green, Smethwick, B66 4LL.					
LOCATION	MATERIAL	QTY	SURFACE TREATMENT	SAMPLE REF	RESULT	HSE NOTIFY	ACTION TAKEN ON CONTRACT	
IF DURING THE COURSE OF WORK SUSPECTED ACM'S ARE IDENTIFIED THAT ARE NOT CONTAINED WITHIN THIS REPORT STOP WORK & SEEK ADVICE								
MAIN VEHICLE ENTANCE TUNNEL CEILING	TEXTURED COATING	-	-	-	-	-	REQUEST SAMPLE IF TO BE DISTURBED	
ITEMS SHOWN BELOW HAVE BEEN ASSESSED ON SITE BY THE ASBESTOS SURVEYOR & ARE CONFIRMED NOT TO BE ACM'S.								
LOCATION DESCRIPTION	MATERIAL	LOCATION DESCRIPTION	MATERIAL	LOCATION DESCRIPTION	MATERIAL			
MAIN SOFFITS	UPVC	LANDING METER CUPBOARD ELECTRICS BACKBOARDS	PLYWOOD					
STORE SHED ROOF SHEETS	STEEL	ALL FLAT DOOR FRAME SEALANTS	SILICONE					
BIN STORE ROOFS	MINERAL FELT	ALL COMMUNAL CUPBOARDS DOOR FRAME SEALTS	SILICONE					
LANDING METER CUPBOARD SHELVES	CONCRETE							
LANDING METER CUPBOARD CEILINGS	CONCRETE							