



Plate 08: Trench 04 representative section. Scales = 1m and 2m. Looking north-west.



Plate 09: Trench 05 in plan. Scales = 1m. Looking north-east.



Plate 10: Trench 05 furrow [0503]. Scale = 1m. Looking west.



Plate 11: Trench 05 furrow [0505]. Scale = 0.3m. Looking south-east.



Plate 12: Trench 05 furrow [0507] in north north-west facing section. Scale = 1m. Looking south south-east.



Plate 13: Trench 05 pit [0509]. Scale = 0.3m. Looking north north-east.



Plate 14: Trench 05 ditch [0511] in north north-west facing section. Scale = 1m. Looking south south-east



Plate 15: Trench 06 oblique. Scales = 1m. Looking north-east.



Plate 16: Trench 06 representative section. Scale = 1m. Looking north-west.



Plate 17: Trench 07 oblique. Scales = 1m. Looking north-west.



Plate 18: Trench 07 representative section. Scale = 1m Looking south-west.



Plate 19: Trench 07 field drain [0710]. Scale = 1m. Looking east.



Plate 20: Trench 07 (number wrong) ditch [0709]. Scale = 1m. Looking south-west.



Plate 21: Trench 08 in plan. Scale = 1m. Looking north-east.



Plate 22: Trench 08 field drain [0804]. Scales = 1m. Looking south-west.



Plate 23: Trench 08 field drain [0804]. Scale = 1m. Looking south-east.



Plate 24: Trench 09 oblique. Scales = 1m. Looking south.



Plate 25: Trench 09 representative section. Scale = 1m. Looking north north-west.



Plate 26: Trench 10 oblique showing field drain. Scales = 1m. Looking west



Plate 27: Trench 10 ditch [1002]. Scale = 1m. Looking south



Plate 28: Trench 10 south facing section of ditch [1002]. Scale = 1m. Looking north



Plate 29: Trench 10 ditch [1005]. Scale = 1m. Looking north-east



Plate 30: Trench 11 plan. Scales = 1m. Looking north-east



Plate 31: Trench 11 representative section. Scale = 1m. Looking south-east



Plate 32: Trench 11 ditch [1103]. Scale = 1m. Looking south-east



Plate 33: Trench 12 in plan. Scales = 1m. Looking east



Plate 34: Trench 12 pit [1203]. Scale = 0.5m. Looking south

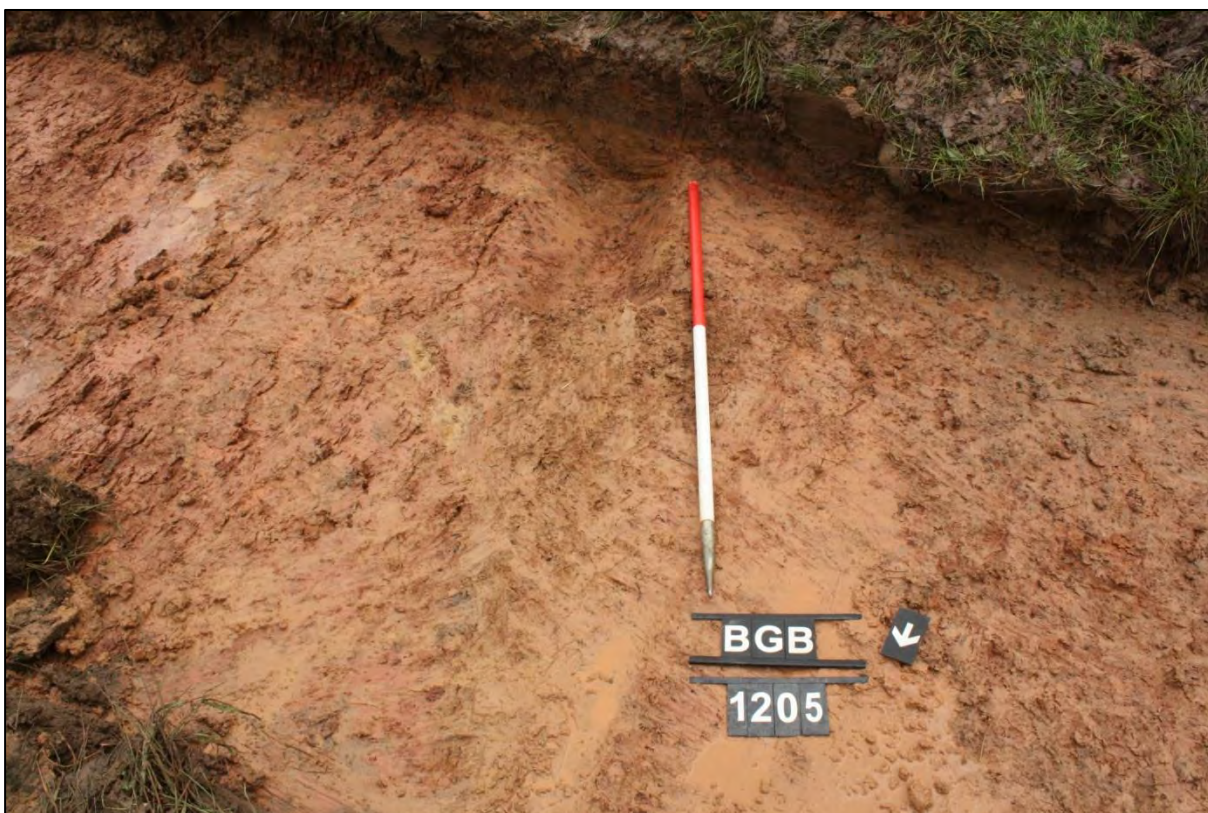


Plate 35: Trench 12 gully [1205]. Scale = 1m. Looking south south-east



Plate 36: Trench 12 north facing section of gully [1205]. Scale = 0.5m. Looking south



Plate 37: Trench 12 ditch [1207]. Scale = 1m. Looking north-west

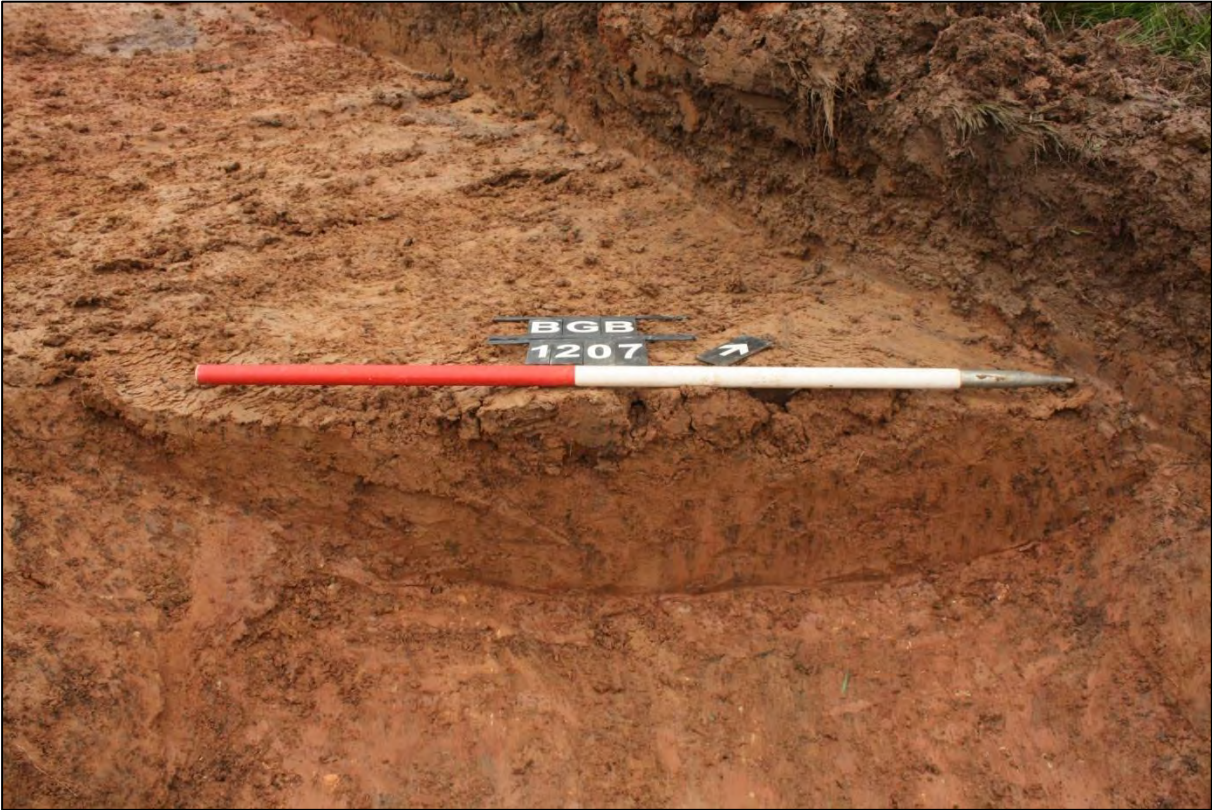


Plate 38: Trench 12 south-east facing section of ditch [1207]. Scale = 1m. Looking north-west



Plate 39: Trench 13 in plan. Scales = 1m. Looking west



Plate 40: Trench 13 representative section. Scale = 1m. Looking north north-west



Plate 41: Trench 14 oblique. Scales = 1m. Looking north-west



Plate 42: Trench 14 representative section. Scale = 1m. Looking east



Plate 43: Trench 15 in plan. Scales = 1m. Looking south-east



Plate 44: Trench 15 cobbled surface [1502]. Scales = 1m. Looking east



Plate 45: Trench 15 remains of cobbled surface [1503]. Scale = 1m. Looking east



Plate 46: Trench 15 oblique of squarish pit [1504]. Scales = 0.5m and 1m. Looking north



Plate 47: Trench 15 south-east facing section [1504]. Scale = 0.5m. Looking north-west



Plate 48: Trench 16 in plan. Scales = 1m. Looking east



Plate 49: Trench 16 representative section including ditches [1603] and [1605]. Scale = 1m. Looking north north-east



Plate 50: Trench 16 north facing section of ditches [1605] and [1609]. Scale = 1m. Looking east



Plate 51: Trench 16 south facing section ditches [1603], [1605] and [1609]. Scale = 0.5m. Looking north



Plate 52: Trench 16 north facing section deposit [1607]. Scales = 1m. Looking south

14 Figures

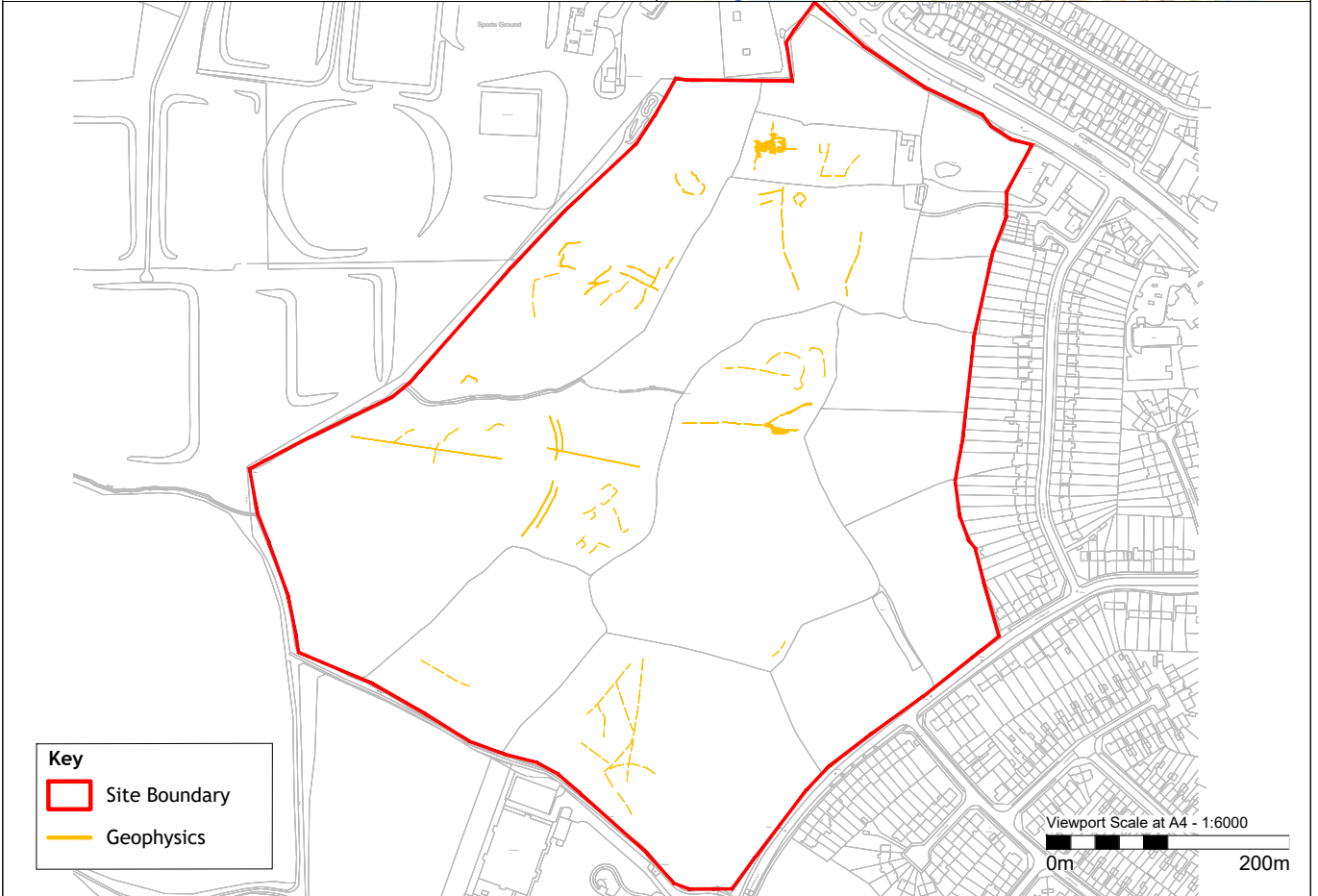
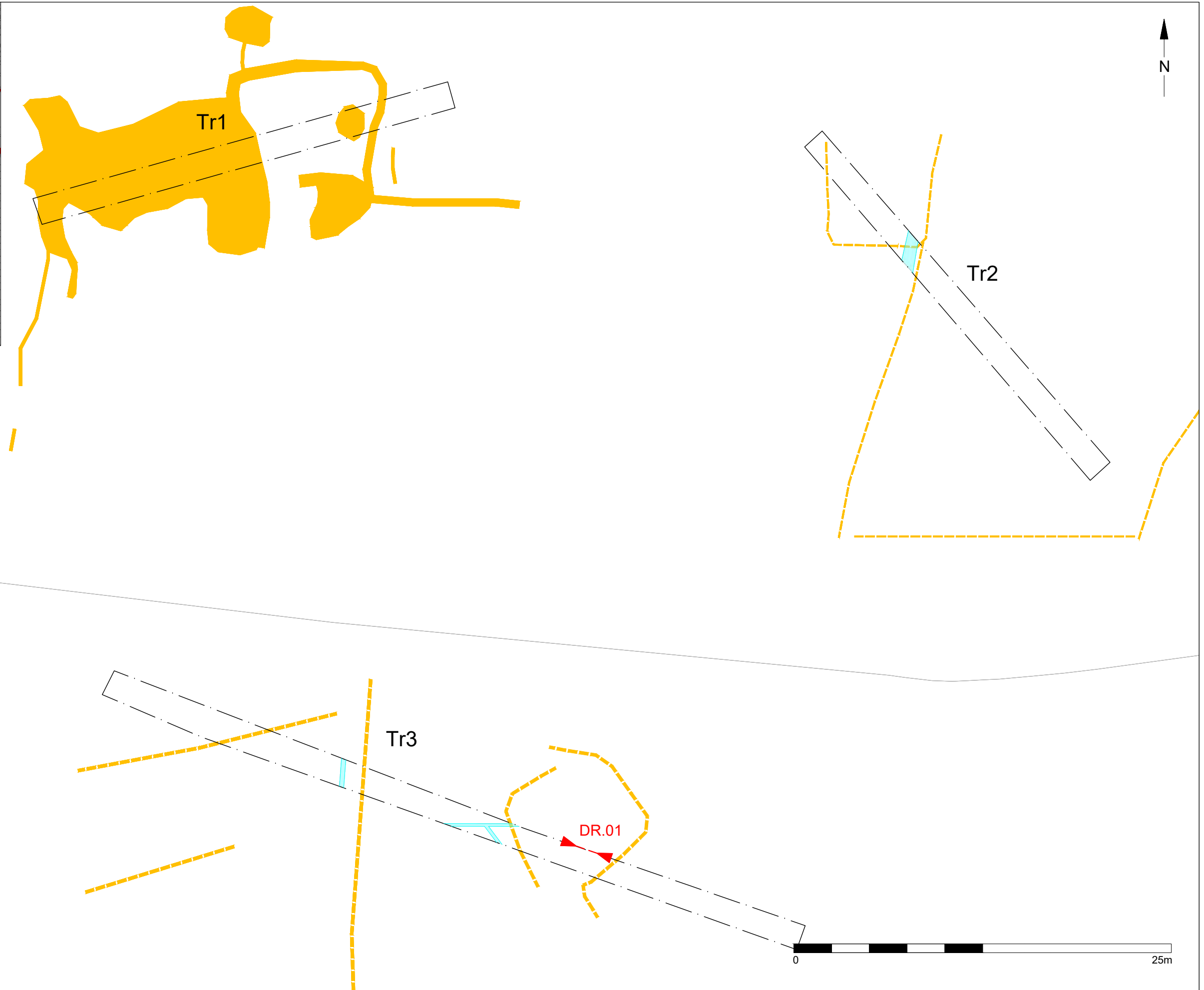
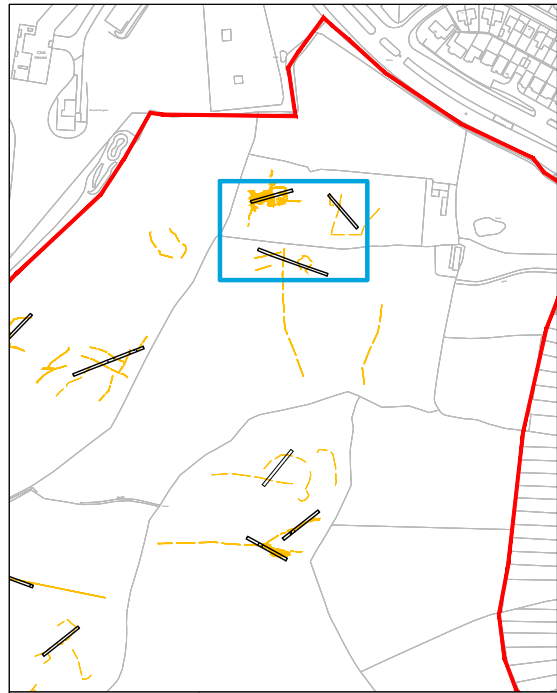


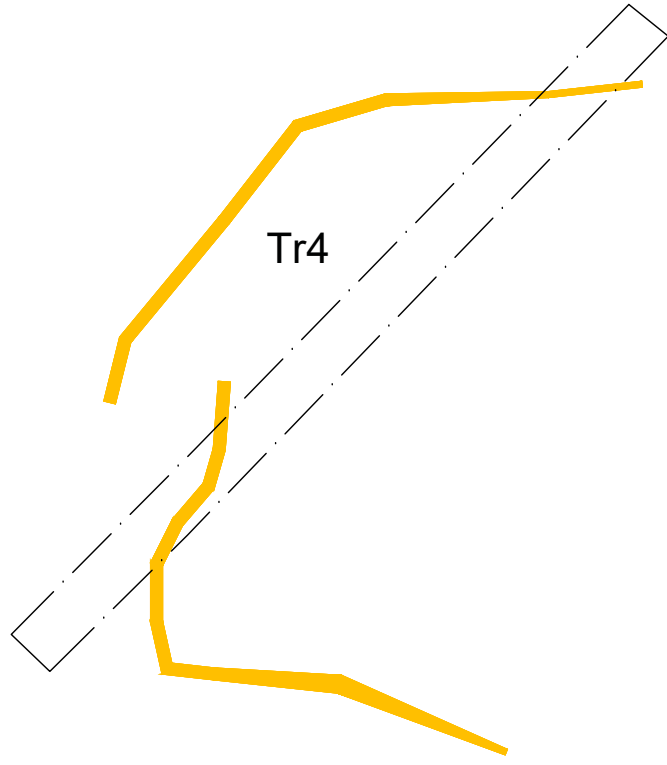
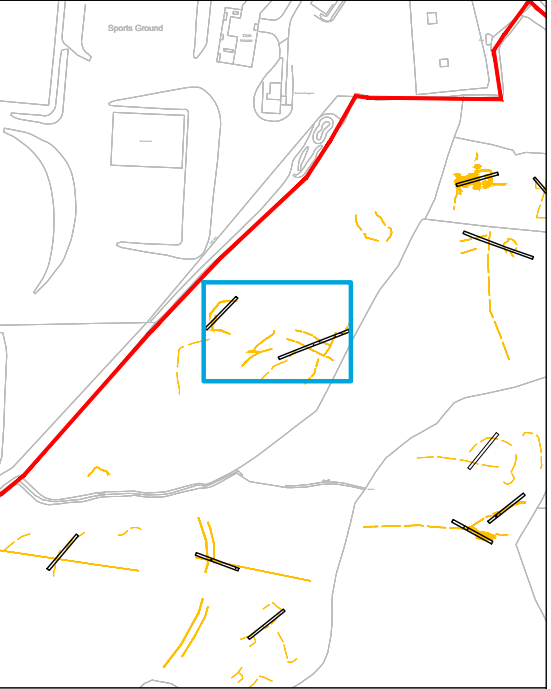
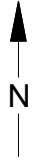


Figure 02 - Trench Layout Overlying Geophysical Survey Data
 BGB - Birmingham Rd., Great Barr

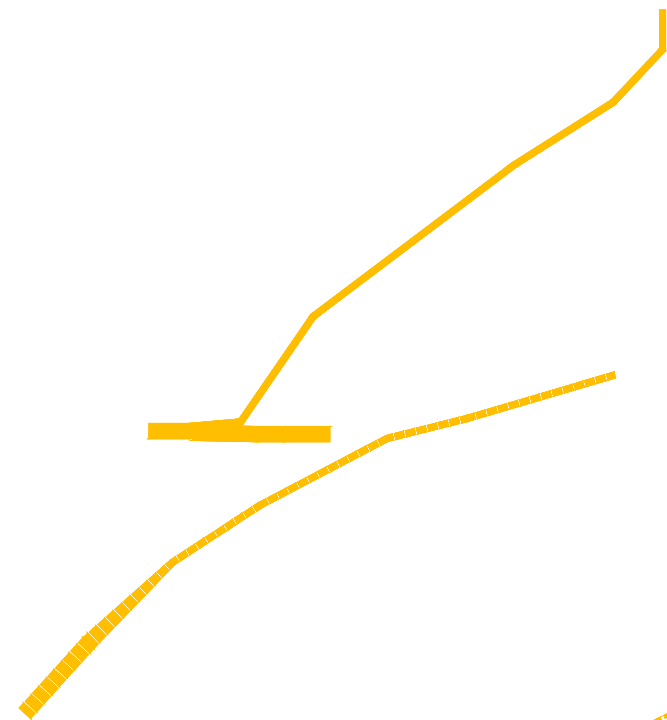
Scale at A3 - 1:2000
 Drawn by MH



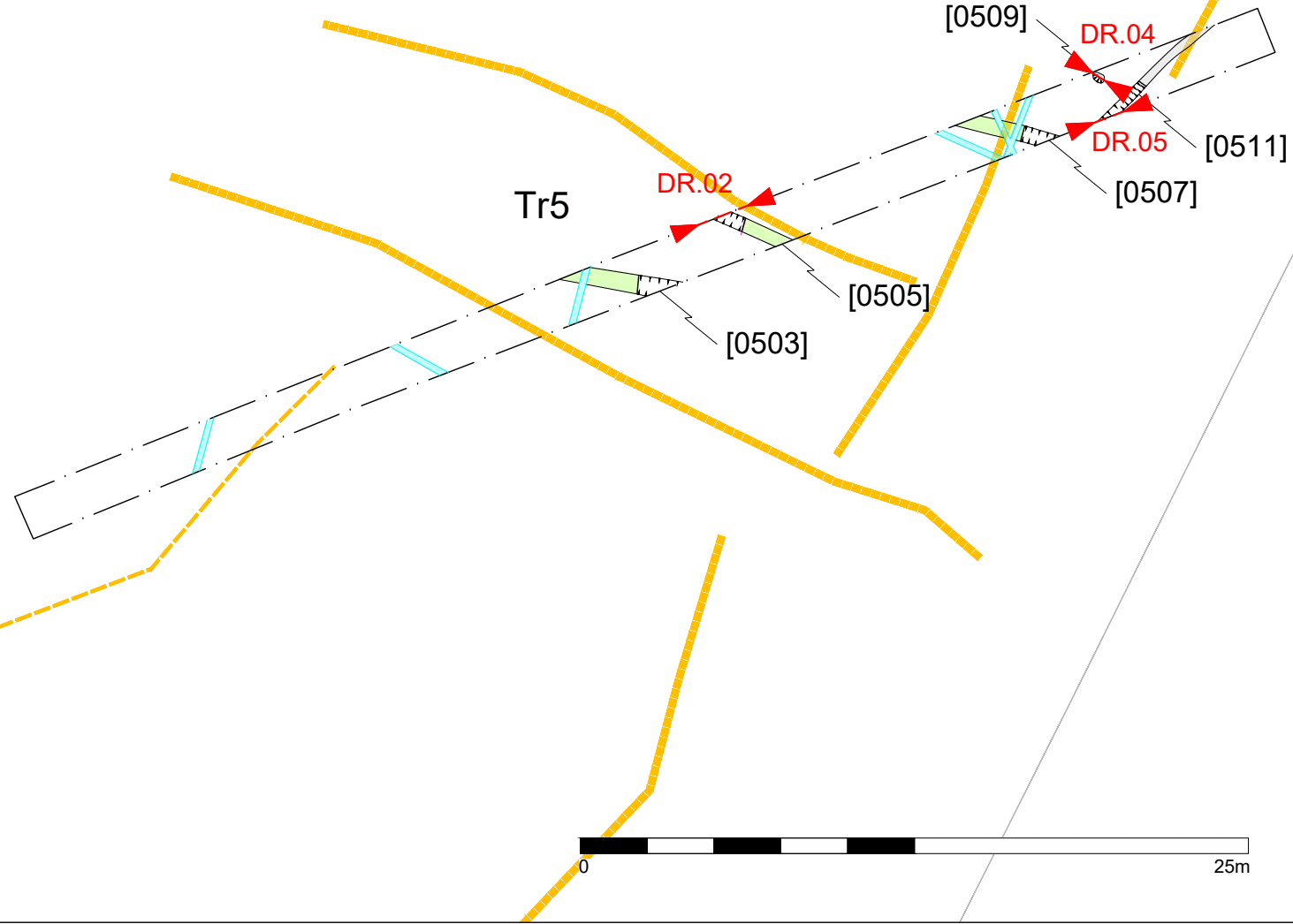
Key	
	Geophysics
	Trench Outline
	Modern Service
	Section Drawing



Tr4



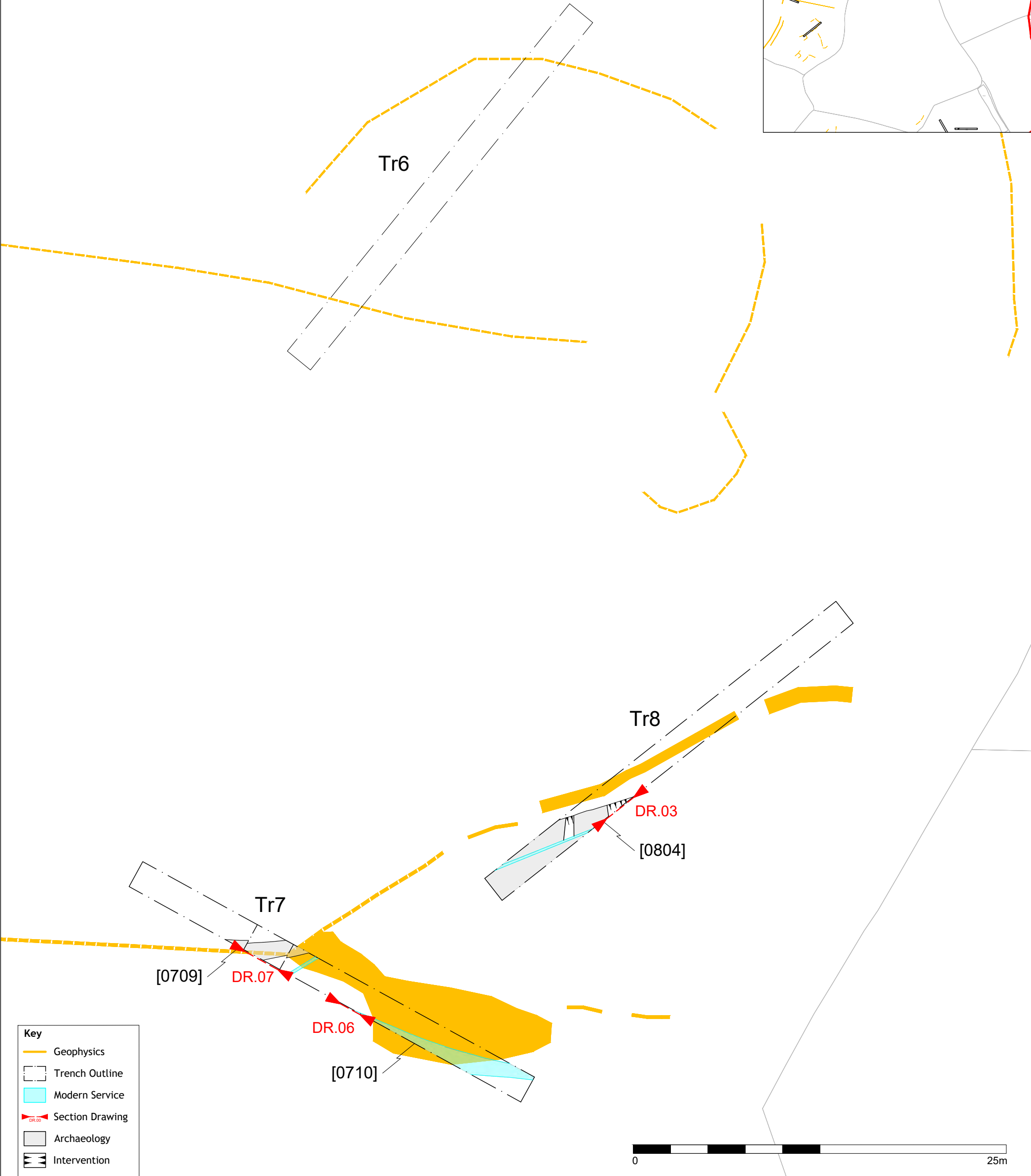
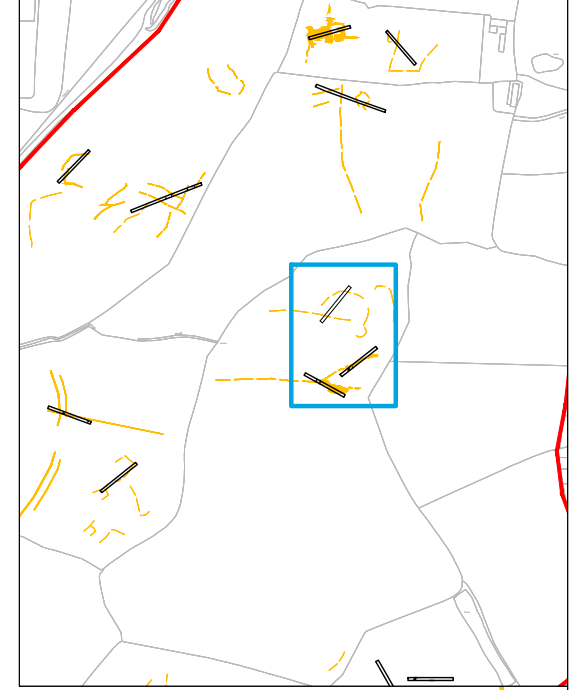
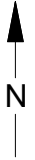
Tr5



Key

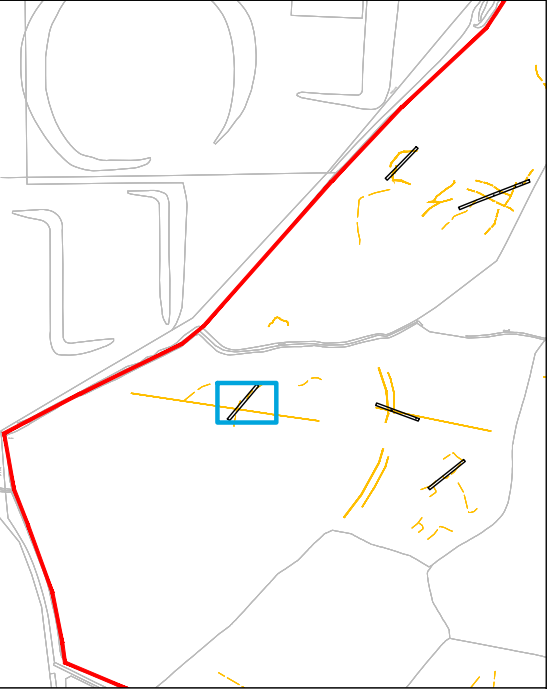
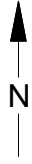
- Geophysics
- Trench Outline
- Modern Service
- Section Drawing
- Archaeology
- Furrow
- Intervention





Key

- Geophysics
- Trench Outline
- Modern Service
- Section Drawing
- Archaeology
- Intervention



Tr9

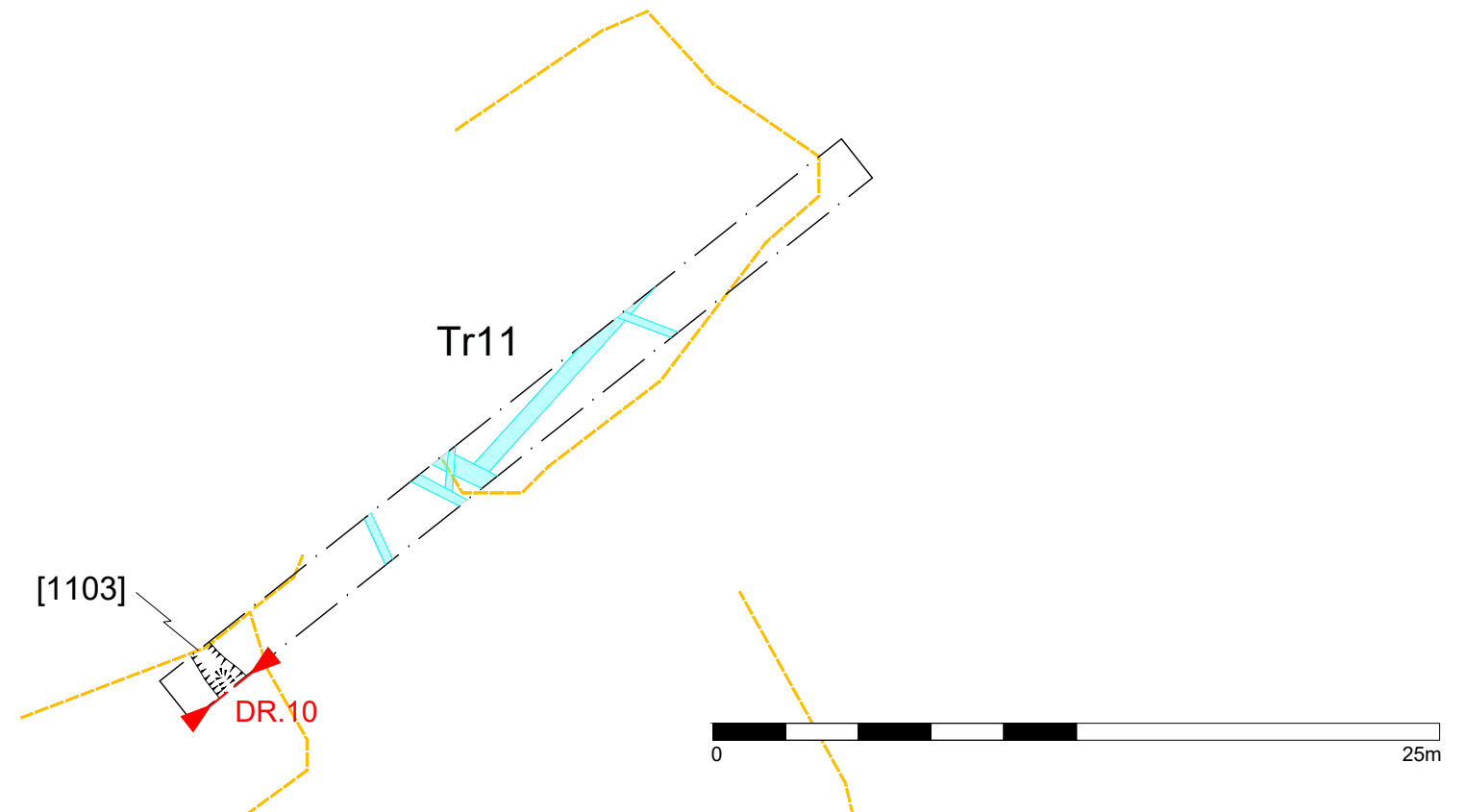
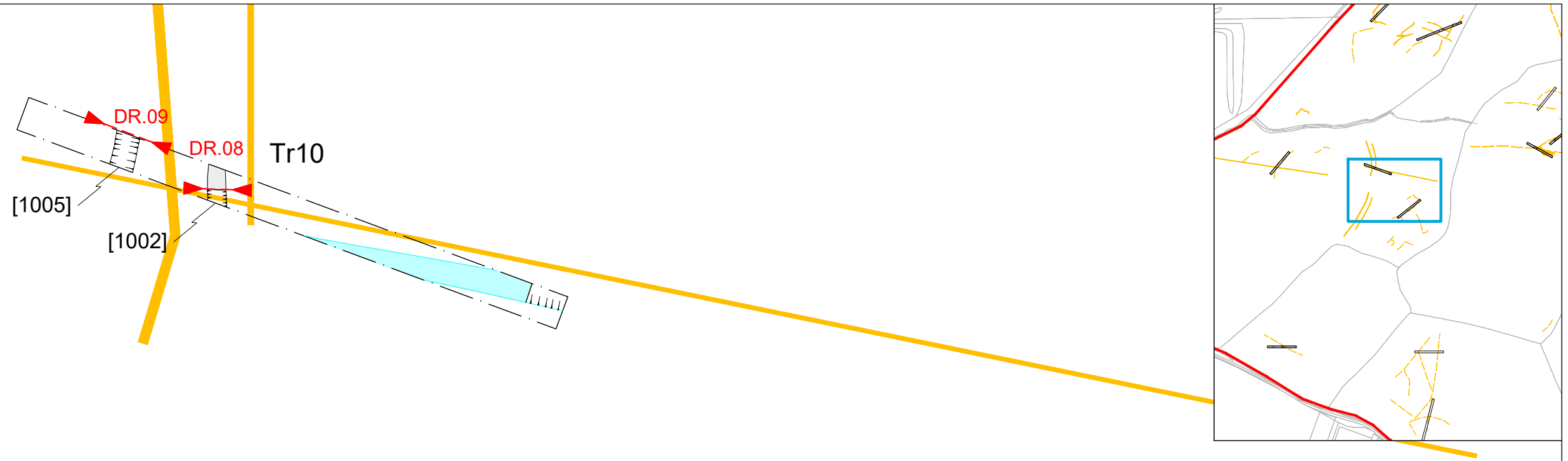
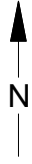
Key

- Geophysics
- Trench Outline
- Modern Service



Figure 06 - Trench 09 Plan
BGB - Birmingham Rd., Great Barr

Scale at A3 - 1:100
Drawn by MH

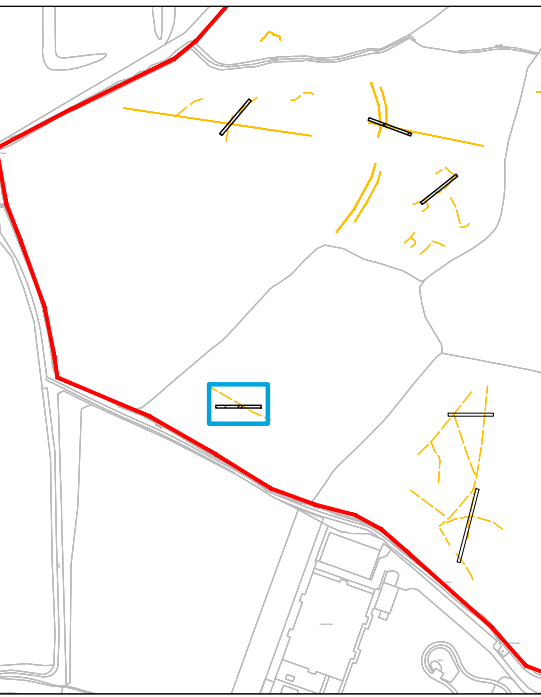
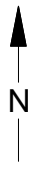


- Key**
- Geophysics
 - Trench Outline
 - Modern Service
 - Section Drawing
 - Archaeology
 - Intervention

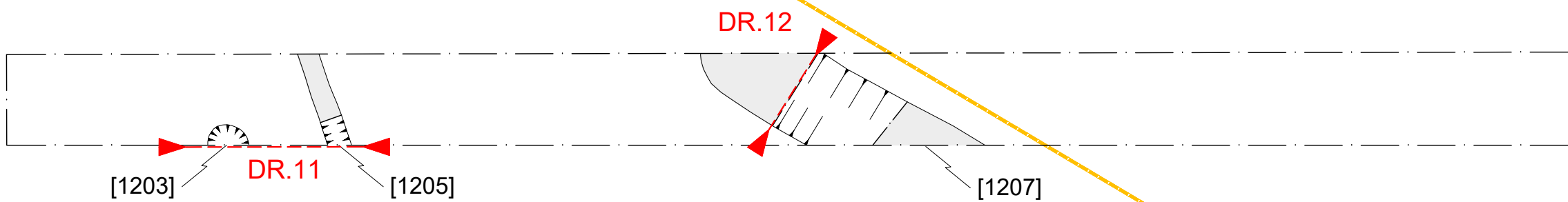


Figure 07 - Trenches 10 - 11 Plan
BGB - Birmingham Rd., Great Barr

Scale at A3 - 1:250
Drawn by MH



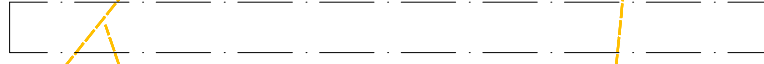
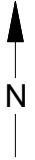
Tr12



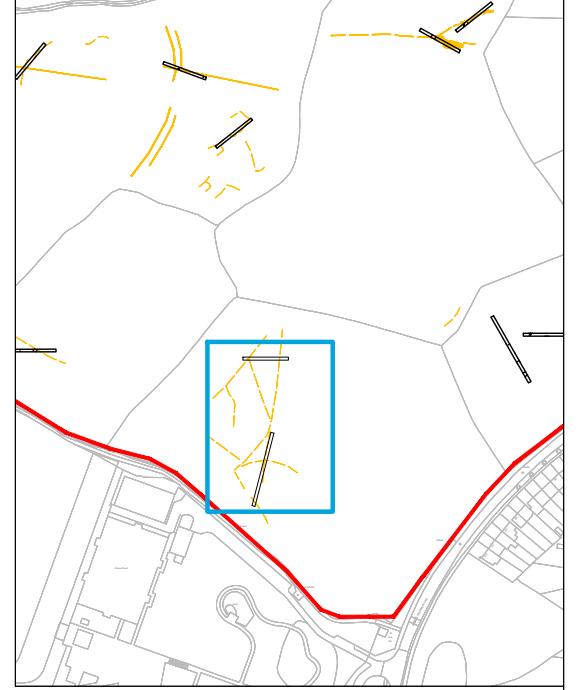
Key

- Geophysics
- Trench Outline
- Section Drawing
- Archaeology
- Intervention





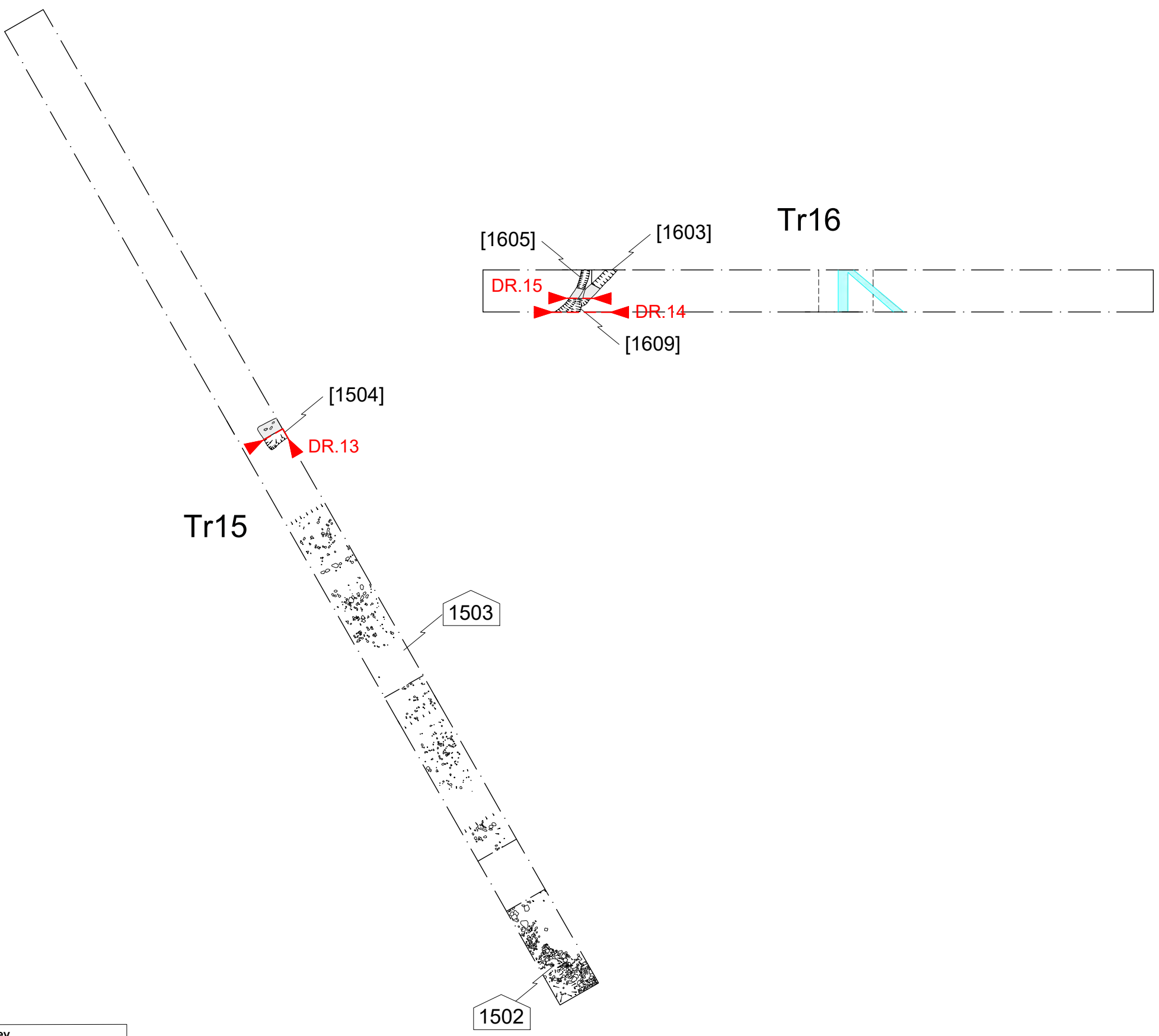
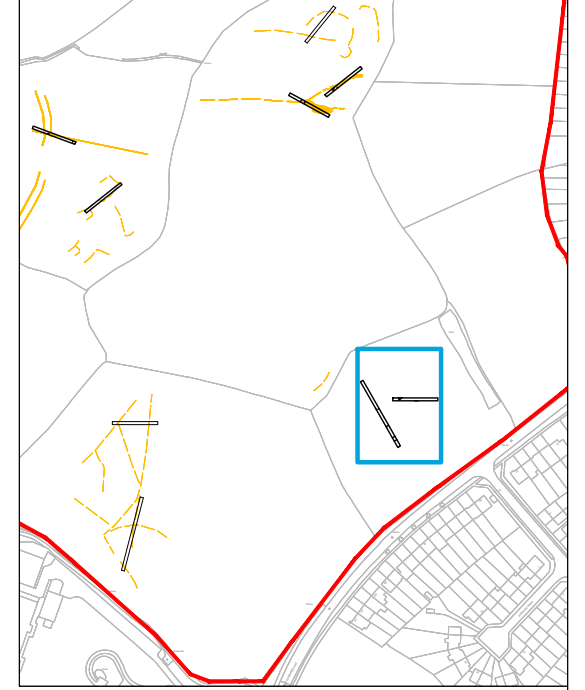
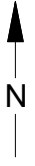
Tr13



Tr14

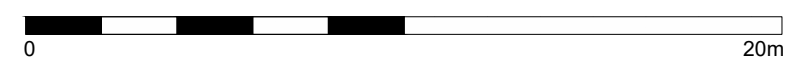
Key
— Geophysics
- - - Trench Outline



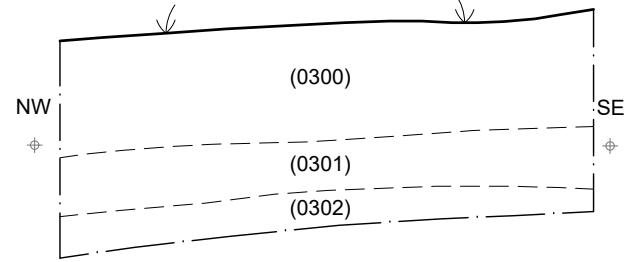


Key

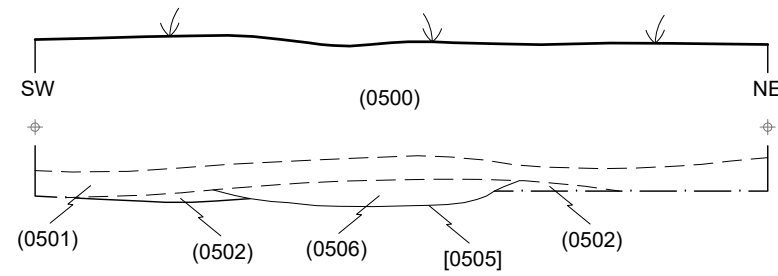
- Trench Outline
- Modern Service
- Section Drawing
- Archaeology
- Intervention
- Stone Surface



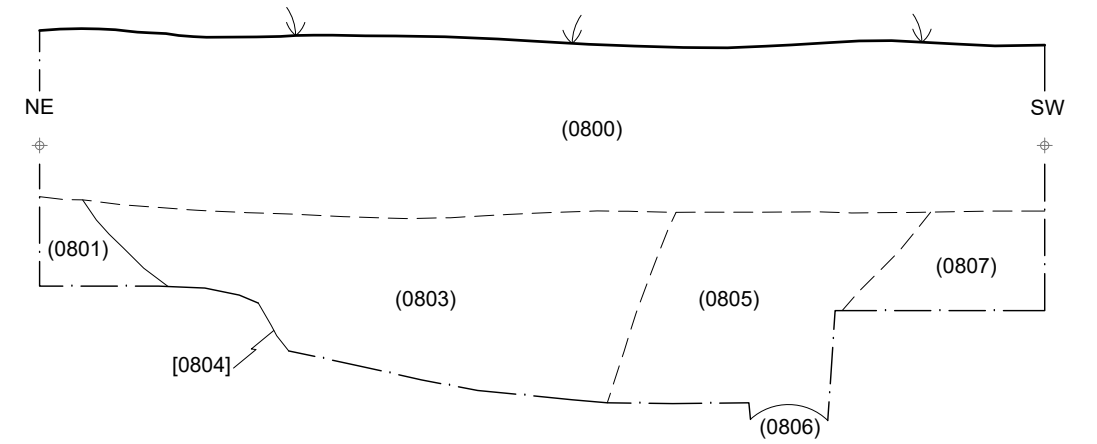
DR.01
South-West Facing Representative Section of Tr.03



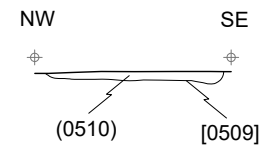
DR.02
South-East Facing Section of [0505]



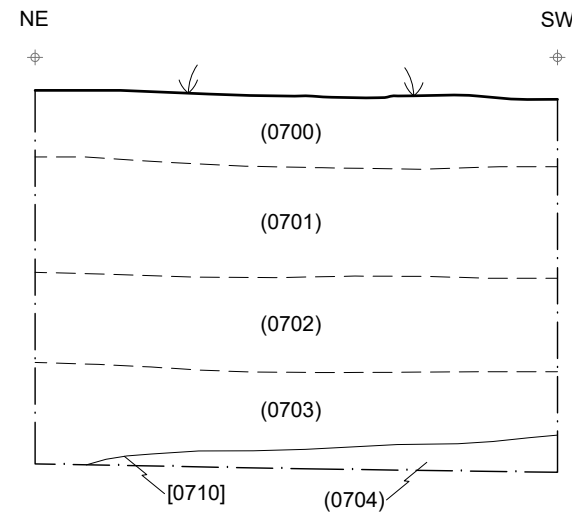
DR.03
North-West Facing Section of [0804]



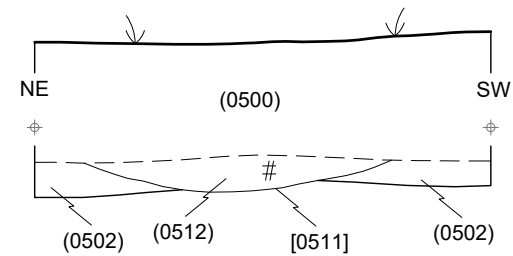
DR.04
South-West Facing Section of [0509]



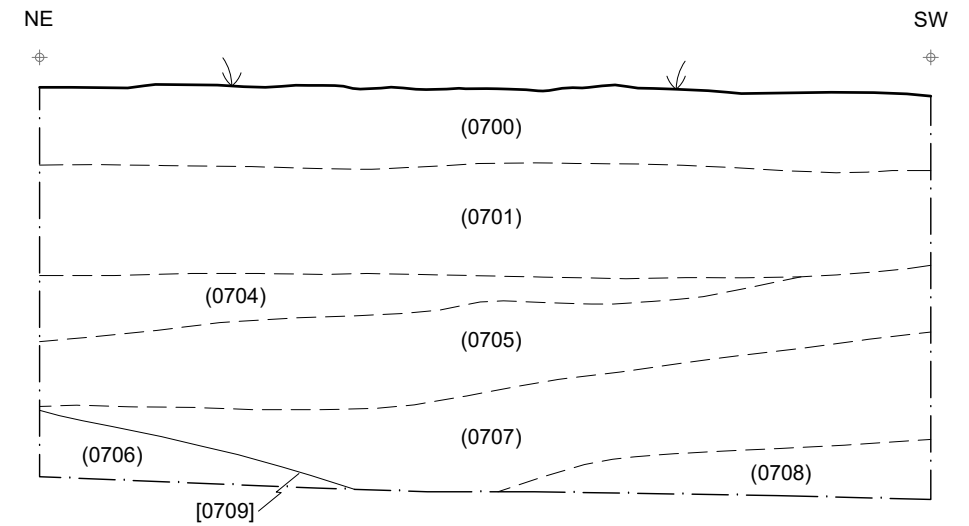
DR.06
North-West Facing Representative Section of Tr.07



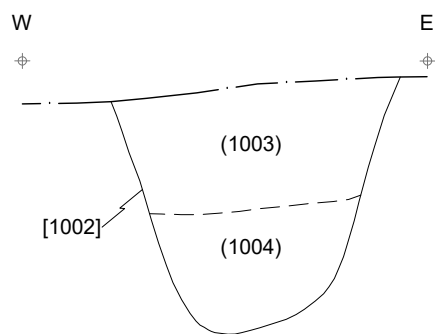
DR.05
North-West Facing Section of [0511]



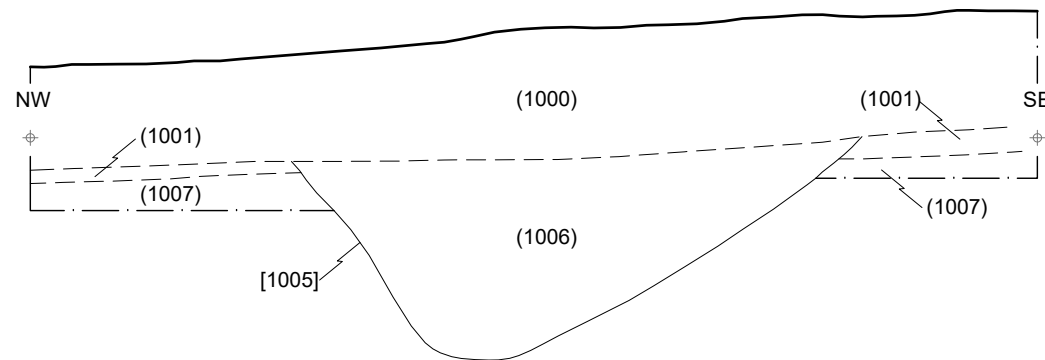
DR.07
North-West Facing Section of [0709]



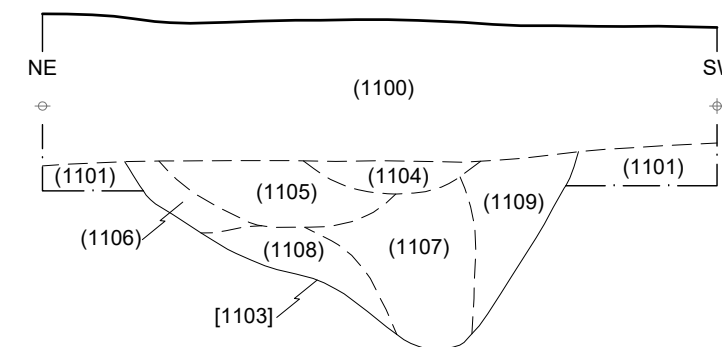
DR.08
South Facing Section of [1002]



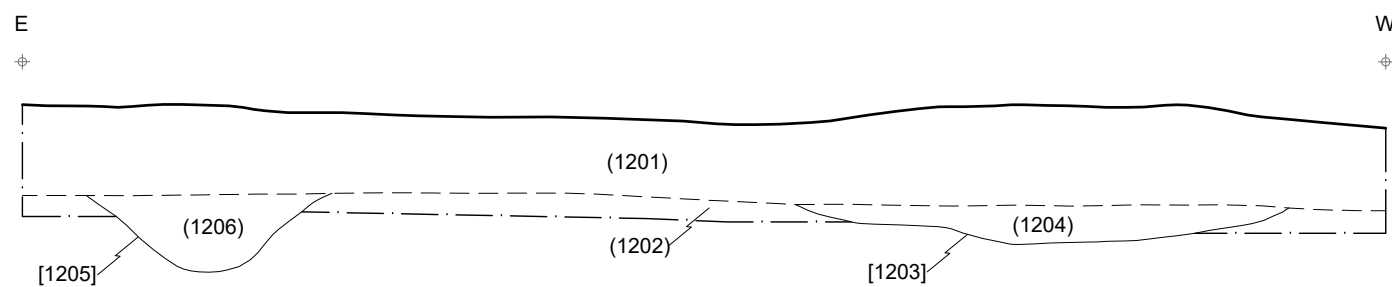
DR.09
South-West Facing Section of [1005]



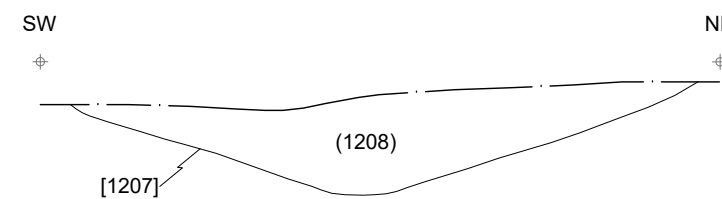
DR.10
North-West Facing Section of [1103]



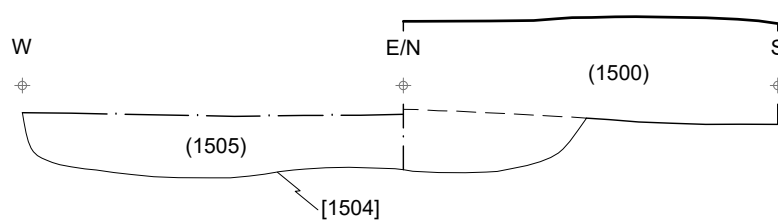
DR.11
North Facing Section of [1203] and [1205]



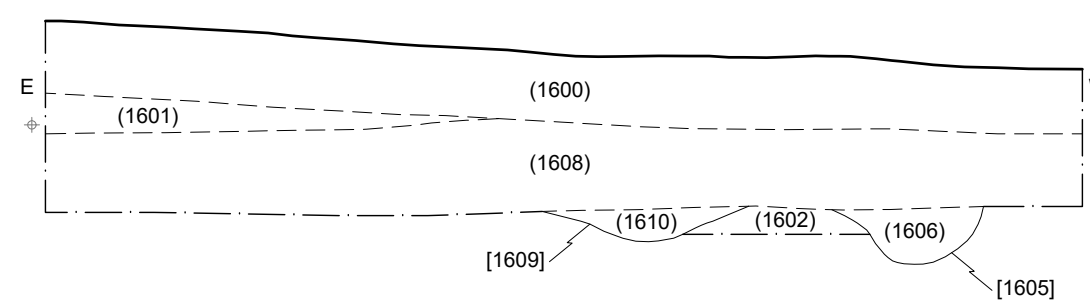
DR.12
South-East Facing Section of [1207]



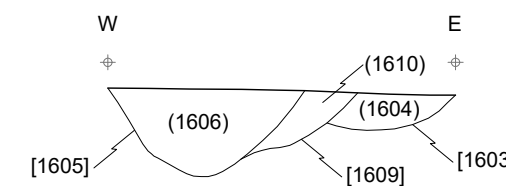
DR.13
North and West Facing Section of [1504]



DR.14
North Facing Section of [1605] and [1609]



DR.15
South Facing Section of [1603], [1605] and [1609]



Appendix 1: Trench Logs

Trench 01					
Trench Dimensions (L x W)	30 x 1.8m	Trench Orientation	WSW-ENE	Trench Depth	0.42m
Context	Type	Description			Thickness
0100	Layer	Topsoil – Friable dark brown clay silt			0.28m
0101	Layer	Alluvium – Strong orange yellow clay			0.1m
0102	Layer	Natural substrate – yellow, pink and orange mottled clay, merging into a dark pink crumbly clay with green sandstone bands			N/A

Trench 02					
Trench Dimensions (L x W)	30 x 1.8m	Trench Orientation	NNE-SSW	Trench Depth	0.5m
Context	Type	Description			Thickness
0200	Layer	Topsoil – Friable dark brown clay silt			0.3m
0201	Layer	Alluvium – Strong orange yellow clay			0.2m
0202	Layer	Natural substrate – yellow, pink and orange mottled clay			N/A

Trench 03					
Trench Dimensions (L x W)	50 x 1.8m	Trench Orientation	ESE - WNW	Trench Depth	0.6m
Context	Type	Description			Thickness
0300	Layer	Topsoil - Dark brownish-grey silty clay			0.32m
0301	Layer	Subsoil – reddish-brown silt clay Occasional sub-rounded stones			0.16m
0302	Layer	Natural substrate – Red clay with yellow mottles			N/A

Trench 04					
Trench Dimensions (L x W)	30 x 1.8m	Trench Orientation	NE-SW	Trench Depth	0.5m
Context	Type	Description			Thickness
0400	Layer	Topsoil – Dark grey/brown silty clay			0.34m
0401	Layer	Subsoil – Light reddish brown silt clay intermittent along trench			0.14m
0402	Layer	Natural Substrate – yellow clay, mottles of yellow and red sands and gravel			N/A

Trench 05					
Trench Dimensions (L x W)	50 x 1.8m	Trench Orientation	ENE-WSW	Trench Depth	0.48m
Context	Type	Description			Thickness
0500	Layer	Topsoil – Dark grey silty clay			0.32m
0501	Layer	Subsoil – Light reddish-brown clay			0.6m
0502	Layer	Natural Substrate – Firm yellow clay with red mottles			N/A
0503	Cut	East to West orientated furrow			0.08m
0504	Fill	Light reddish-brown clay silt, fill of [0503]			0.08m
0505	Cut	East to West orientated furrow			0.07m
0506	Fill	Firm light reddish brown clay silt, fill of [0505]			0.07m
0507	Cut	East to West orientated furrow			0.08m
0508	Fill	Light reddish-brown clay silt, fill of [0507]			0.08m
0509	Cut	Oval pit			0.03m
0510	Fill	Friable light brown clay silt, fill of [0509]			0.03m
0511	Cut	North-east to south-west orientated gully			0.1m

0512	Fill	Friable mid grey brown clay silt fill of [0511]	0.1m
------	------	---	------

Trench 06					
Trench Dimensions (L x W)	30 x 1.8m	Trench Orientation	NE-SW	Trench Depth	0.86m
Context	Type	Description			Thickness
0600	Layer	Topsoil – Friable grey clay silt			0.3m
0601	Layer	Subsoil – Strong brown orange clay			0.12m
0602	Layer	Natural substrate – firm red clay with sand mottles merging into limestone banding with pink clay mottles			N/A

Trench 07					
Trench Dimensions (L x W)	30 x 1.8m	Trench Orientation	ENE-WSW	Trench Depth	1.14m
Context	Type	Description			Thickness
0700	Layer	Topsoil – Friable grey brown clay silt			0.22m
0701	Layer	Subsoil – Friable-firm mid dark grey silt clay			0.3m
0702	Fill	Firm pink brown clay fill of [0710]			0.22m
0703	Fill	Firm light brown grey clay fill of [0710]			0.2m
0704	Deposit	Firm orange pink clay infilling a hollow/ pond			0.16m
0705	Deposit	Firm light pink grey clay infilling a hollow/ pond			0.14m
0706	Layer	Natural substrate - Firm pink and yellow mottled clay			N/A
0707	Fill	Firm brown orange yellow redeposited natural fill of [0709]			0.24m
0708	Fill	Firm light grey clay fill of [0709]			0.18m
0709	Cut	North-east to south-west linear ditch			>0.2m

0710	Cut	Cut for WSW-ENE orientated field drain	N/A
------	-----	--	-----

Trench 08					
Trench Dimensions (L x W)	30 x 1.8m	Trench Orientation	WNW - ESE	Trench Depth	0.68m
Context	Type	Description			Thickness
0800	Layer	Topsoil – Friable grey brown clay silt			0.44m
0801	Layer	Alluvial subsoil – Strong brown orange clay			0.24m
0802	Layer	Natural Substrate – Mottled pink natural clay			N/A
0803	Fill	Mid yellow grey clay fill of [0804]			0.5m
0804	Cut	Cut for south-east to north-west field drain			>1m
0805	Fill	Firm mid grey clay fill of [0804]			0.5m
0806	Fill	Rubble deposit covering land drain in [0804]			0.5m
0807	Fill	Firm pink clay fill of modern land drain cutting [0804]			N/A

Trench 09					
Trench Dimensions (L x W)	30 x 1.8m	Trench Orientation	NE-SW	Trench Depth	0.5m
Context	Type	Description			Thickness
0900	Layer	Topsoil – Friable mid-dark brown grey clay silt.			0.34m
0901	Layer	Sub-Soil – Firm strong orange brown clay			0.18m
0902	Layer	Natural Substrate – Firm pink-yellow mottled clay			N/A

Trench 10					
Trench Dimensions (L x W)	30x 1.8m	Trench Orientation	WNW-ESE	Trench Depth	0.42m
Context	Type	Description			Thickness
1000	Layer	Topsoil – Dark grey silty clay			0.32m
1001	Layer	Subsoil – Light brown to light reddish-brown silt clay			0.4m
1002	Cut	North to south orientated post medieval ditch			0.8m
1003	Fill	Mid brown silty sand with clay mottles. Fill of [1002]			0.4m
1004	Fill	Red clay and yellow sand, redeposited natural fill of [1002]			0.4m
1005	Cut	SSW-NNE orientated post medieval ditch.			0.56m
1006	Fill	Dark brown – grey brown slightly sandy clay silt fill of [1005]			0.56m
1007	Layer	Natural substrate – mottled red and yellow clay with sand patches			N/A

Trench 11					
Trench Dimensions (L x W)	30 x 1.8m	Trench Orientation	WNW-ESE	Trench Depth	0.4m
Context	Type	Description			Thickness
1100	Layer	Topsoil – Dark grey silty clay			0.4m
1101	Layer	Alluvial subsoil – Reddish brown silt clay			0.1m
1102	Layer	Natural substrate -			N/A
1103	Cut	SSW-NNE modern linear ditch			0.5m
1104	Fill	Firm light orange brown silt clay fill of [1103]			0.08m
1105	Fill	Firm light blue grey clay fill of [1103]			0.2m
1106	Fill	Firm brown grey clay fill of [1103]			0.2m

1107	Fill	Firm light brown clay with orange mottles fill of [1103]	0.45m
1108	Fill	Firm yellow orange redeposited natural fill of [1103]	0.14m
1109	Fill	Firm yellow grey sand clay fill of [1103]	0.5m

Trench 12					
Trench Dimensions (L x W)	30 x 1.8m	Trench Orientation	E-W	Trench Depth	0.36m
Context	Type	Description		Thickness	
1201	Layer	Topsoil – Dark grey crumbly silty clay		0.25m	
1202	Layer	Natural substrate – Red clay with lignite inclusions		N/A	
1203	Cut	Cut of pit		0.1m	
1204	Fill	Light greyish yellow brown clay silt fill of [1203]		0.1m	
1205	Cut	Cut of NNW-SSE gully		0.22m	
1206	Fill	Light yellow brown clay silt fill of [1205]		0.22m	
1207	Cut	Cut of NW-SE ditch		0.24m	
1208	Fill	Light yellowish brown silty clay fill of [1207]		0.24m	

Trench 13					
Trench Dimensions (L x W)	30 x 1.8m	Trench Orientation	W-E	Trench Depth	0.36m
Context	Type	Description			Thickness
1300	Layer	Topsoil – dark grey silty clay lignite inclusions			0.32m
1301	Layer	Natural Substrate – red clay			N/A

Trench 14					
Trench Dimensions (L x W)	50 x 1.8m	Trench Orientation	NE-SW	Trench Depth	0.46m
Context	Type	Description			Thickness
1400	Layer	Topsoil – dark grey silty clay lignite inclusions, mottles of red clay			0.31m
1401	Layer	Natural Substrate – red clay			N/A

Trench 15					
Trench Dimensions (L x W)	50 x 1.8m	Trench Orientation	NW-SE	Trench Depth	0.4m
Context	Type	Description			Thickness
1500	Layer	Topsoil – Friable dark brown mid silty-sand			0.4m
1501	Layer	Disturbed or redeposited natural clay bedding for cobbles [1502]			0.05m
1502	Structure	Cobbled surface to the SE end of trench			0.1m
1503	Structure	Cobbled surface in the middle of trench			0.1m
1504	Cut	Cut of squarish pit			0.15m
1505	Fill	Friable mixed brownish-red and dark grey-brown silty clay, with sandstone inclusions			0.15m
1506	Layer	Natural Substrate – Mottled red and yellow clay			N/A

Trench 16					
Trench Dimensions (L x W)	30 x 1.8m	Trench Orientation	E-W	Trench Depth	0.40m
Context	Type	Description			Thickness
1600	Layer	Topsoil – Friable dark grey brown clay silt			0.1m
1601	Layer	Subsoil – Friable dark brownish – yellow silty clay			0.08m
1602	Layer	Natural substrate – Firm mid brown yellow and mottle red clay			N/A
1603	Cut	NE-SW orientated linear ditch			0.34m
1604	Fill	Firm dark reddish grey silty clay fill of [1603]			0.34m
1605	Cut	NNE-SW curvilinear ditch cutting [1609]			0.2m
1606	Fill	Firm light greyish red clay silt fill of [1605]			0.2m
1607	Deposit	Friable dark grey silty clay deposit within a hollow			0.18m
1608	Layer	Greyish mottled pink redeposited natural clay with sandstone fragments			0.2m
1609	Cut	N-S orientated linear ditch cutting [1603]			0.1m
1610	Fill	Firm pink grey clay fill of [1609]			0.1m