

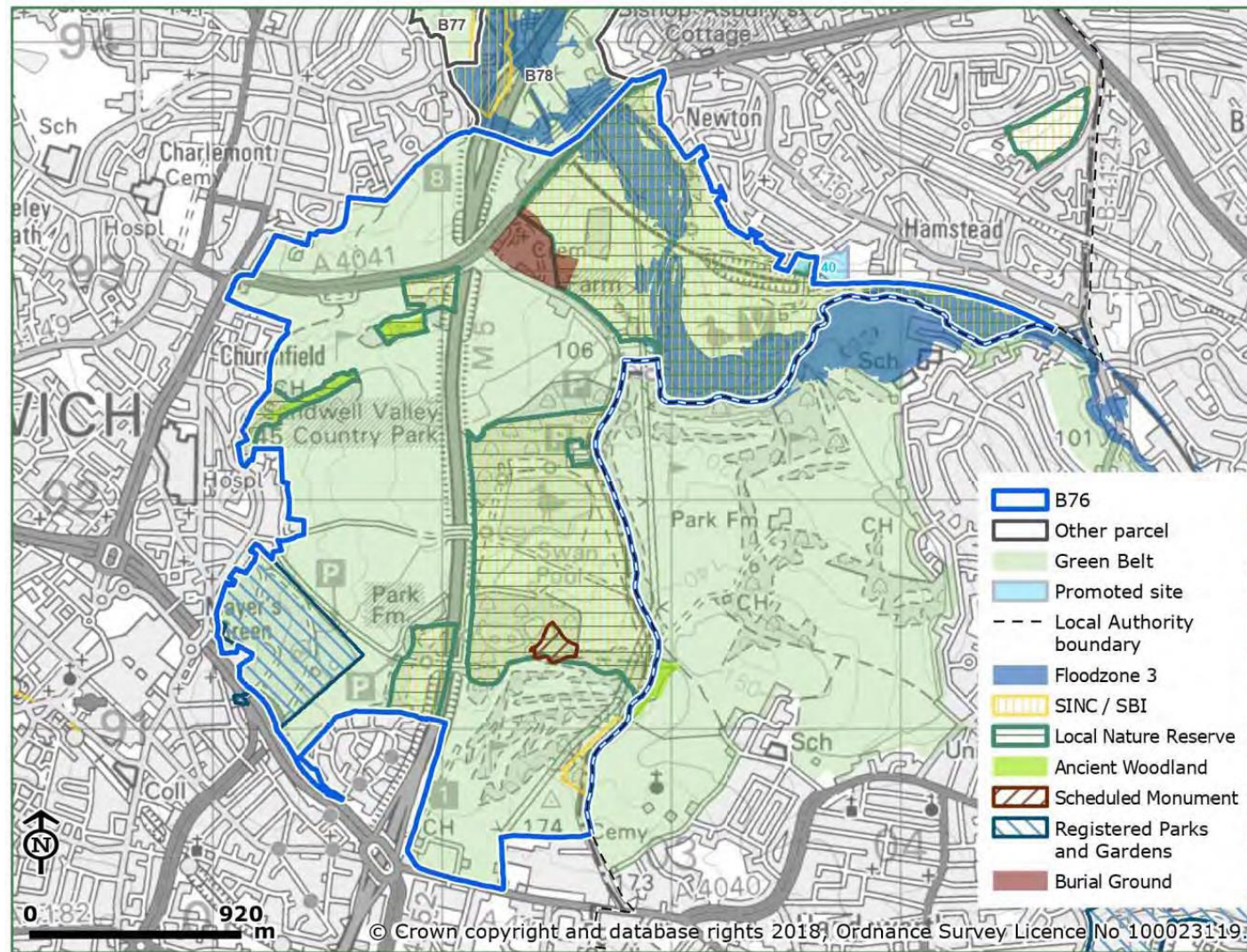


**SANDWELL LOCAL PLAN - EXAMINATION IN PUBLIC  
JANUARY 2025**

**TOPIC PAPER – THE ENVIRONMENT**

Appendix 5 - Sandwell Green Belt - extract from LUC report

| Parcel ref                      | Parcel area (ha) | Purpose 1 rating<br>Checking unrestricted sprawl | Purpose 2 rating<br>Preventing merging towns | Purpose 3 rating<br>Safeguarding countryside from encroachment | Purpose 4 rating<br>Preserving setting and special character of historic towns |
|---------------------------------|------------------|--|--|--|--|
| B76 - Sandwell Valley           | 515.3            | Strong   | Strong                                       | Strong   | Weak / No contribution   |
| B77 - Charlemont                | 11.4             | Moderate   | Weak / No contribution                       | Moderate   | Weak / No contribution   |
| B78 - Ray Hall Waterworks       | 114.3            | Moderate   | Strong                                       | Moderate   | Weak / No contribution   |
| B79 - M6 Junction 8             | 23.0             | Weak / No contribution                           | Weak / No contribution                       | Moderate   | Weak / No contribution   |
| B80 - Painswick substation      | 26.6             | Weak / No contribution                           | Strong                                       | Moderate   | Weak / No contribution   |
| B81 - Wilderness Lane           | 71.7             | Moderate   | Strong                                       | Moderate   | Weak / No contribution   |
| B82 - Q3 Academy                | 5.8              | Moderate   | Moderate                                     | Moderate   | Weak / No contribution   |
| B83 - Red House Park            | 19.5             | Weak / No contribution                           | Weak / No contribution                       | Moderate   | Weak / No contribution   |
| B84 - M6 Junction 7             | 4.9              | Weak / No contribution                           | Weak / No contribution                       | Moderate   | Weak / No contribution   |
| B85 - Holiday Inn, Chapel Lane  | 4.9              | Moderate   | Moderate                                     | Moderate   | Weak / No contribution   |
| B86 - Whitecrest Primary School | 25.5             | Moderate   | Moderate                                     | Moderate   | Weak / No contribution   |

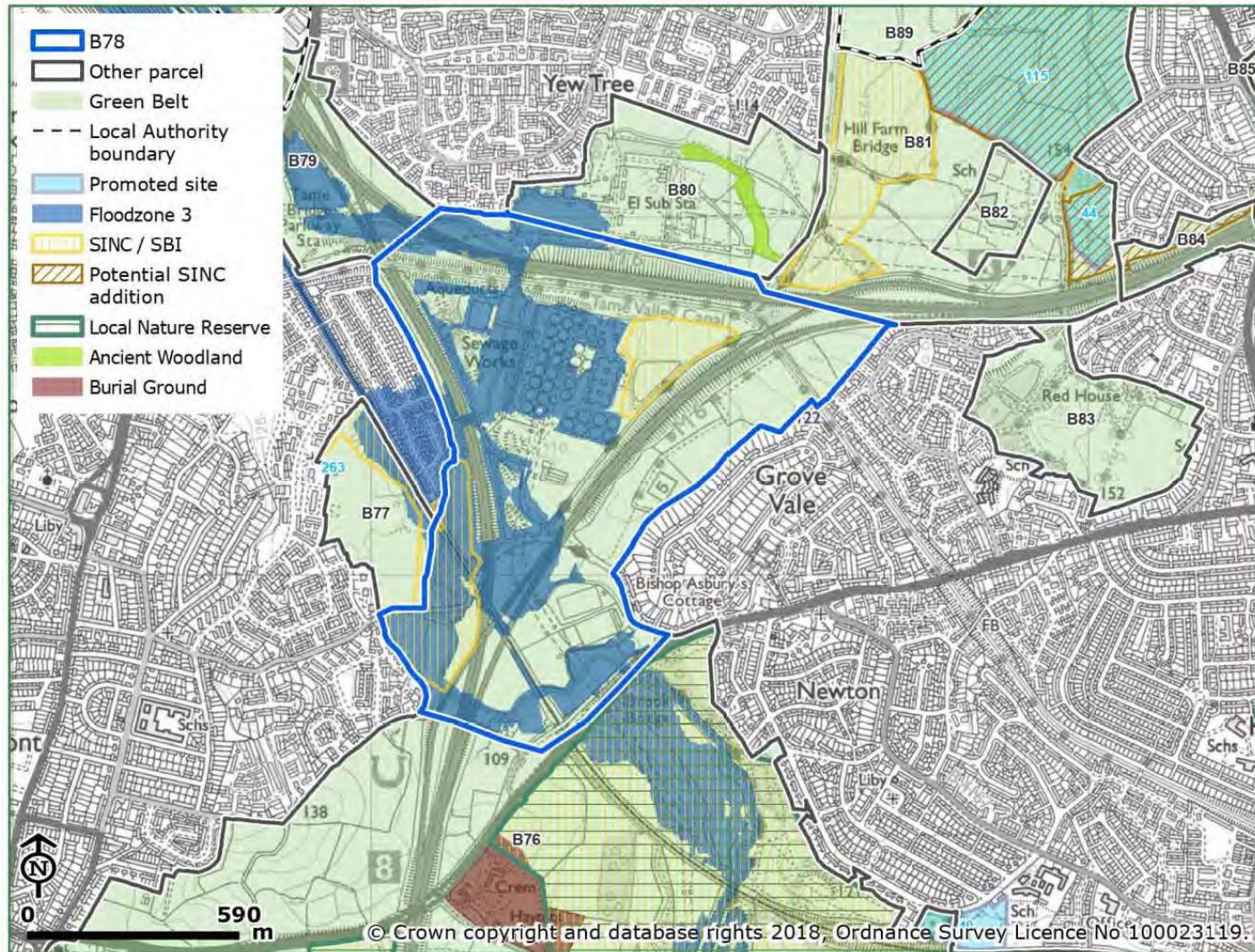


B76 Sandwell Valley



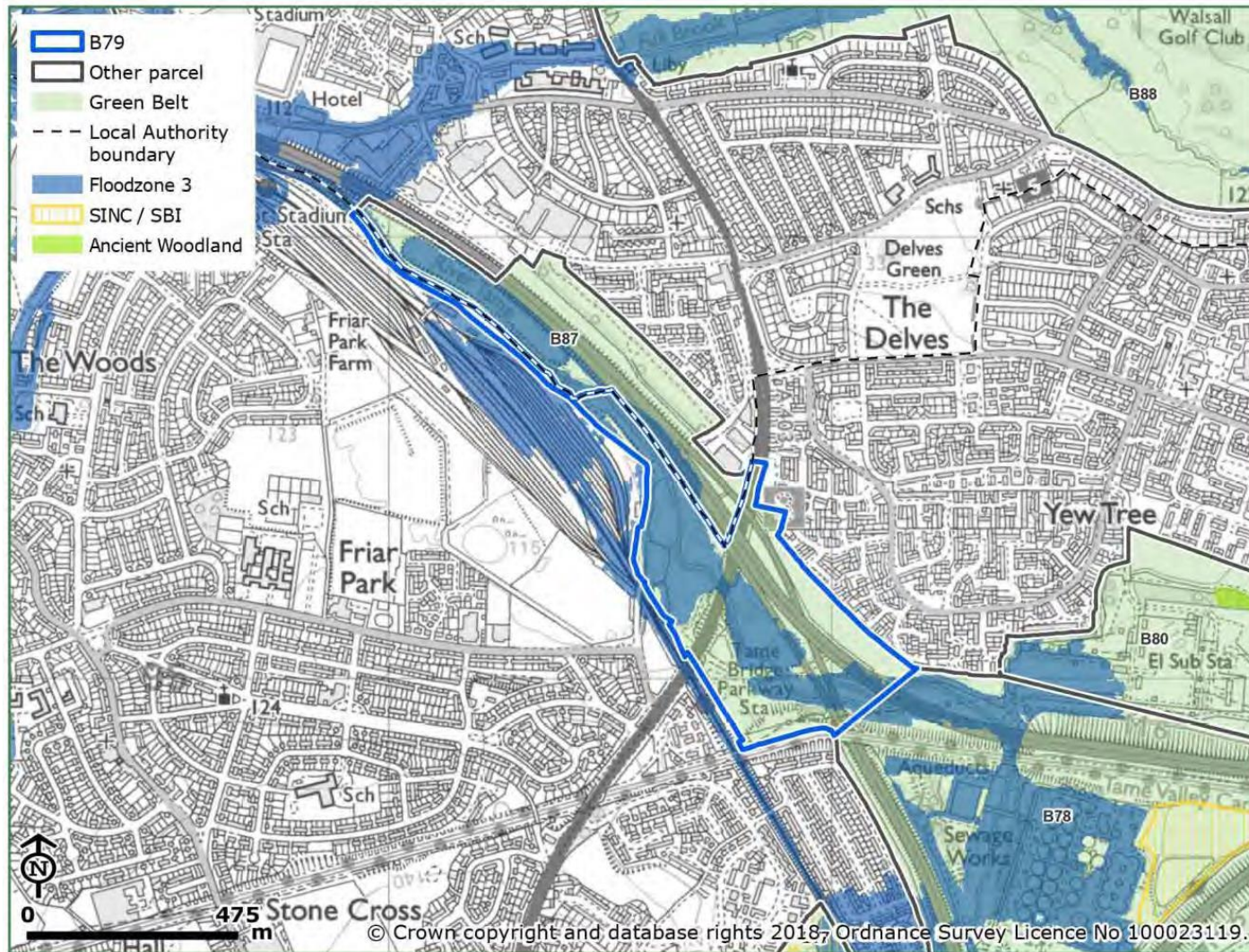






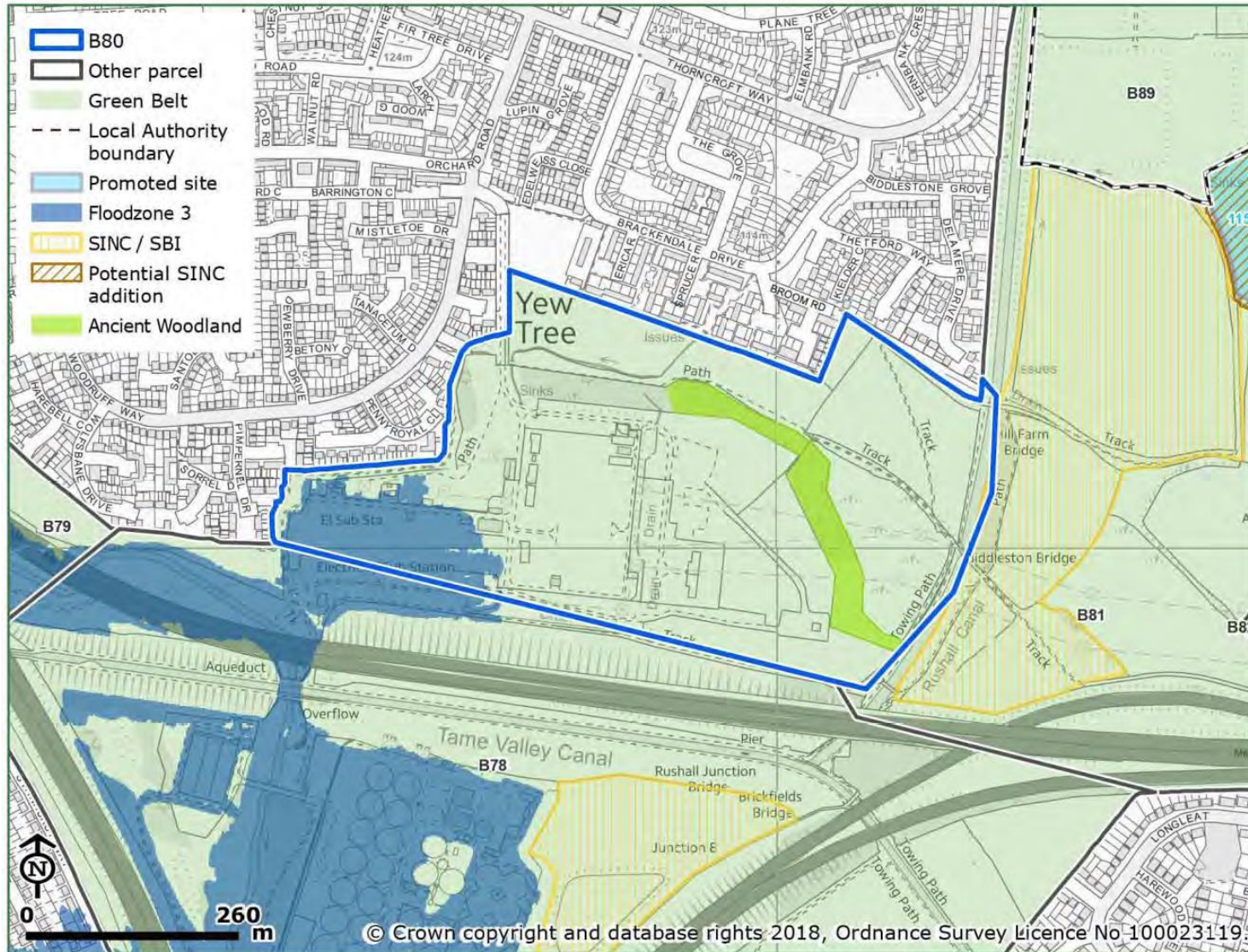
B78 Ray Hall Water Works





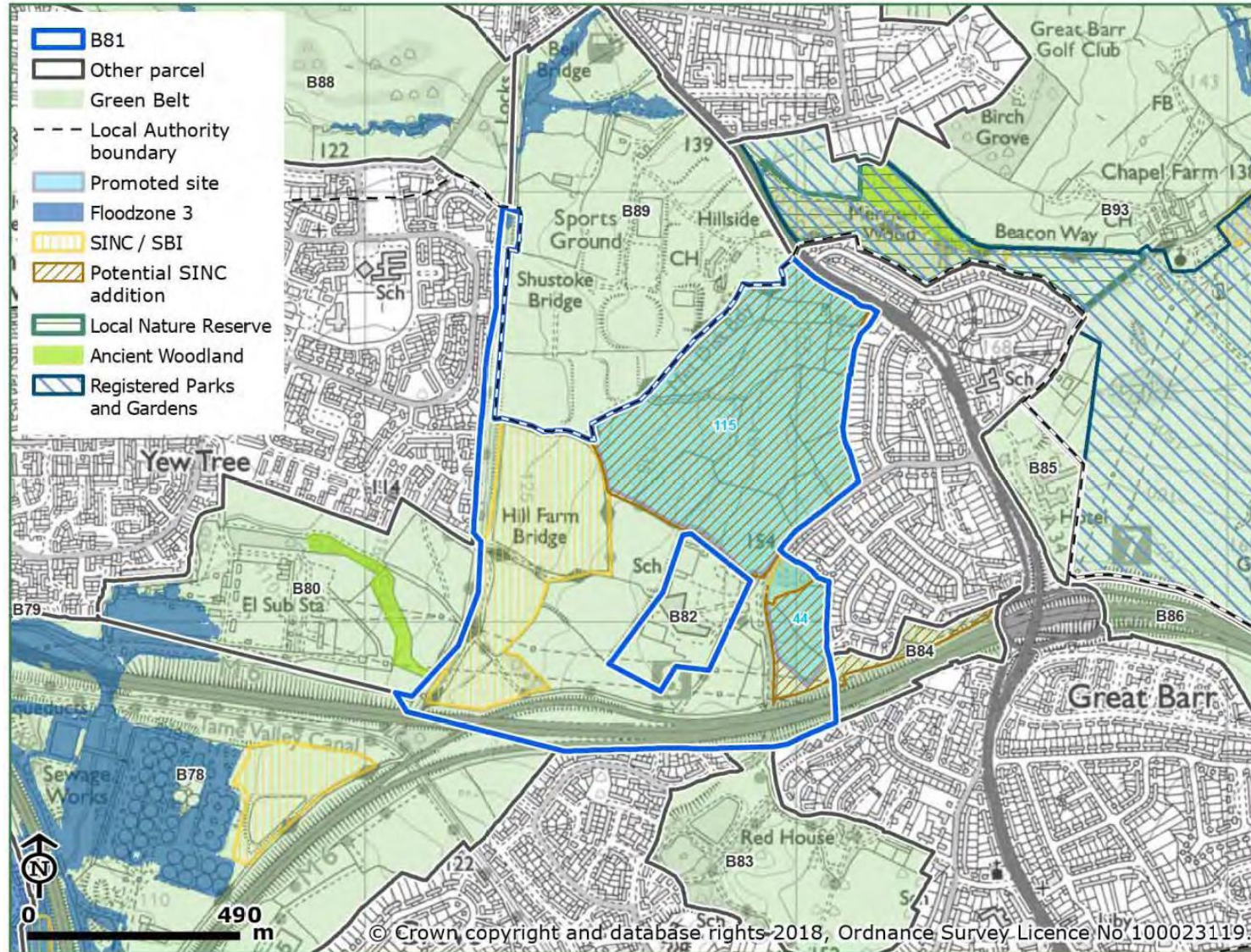
B79 M6 Junction 8





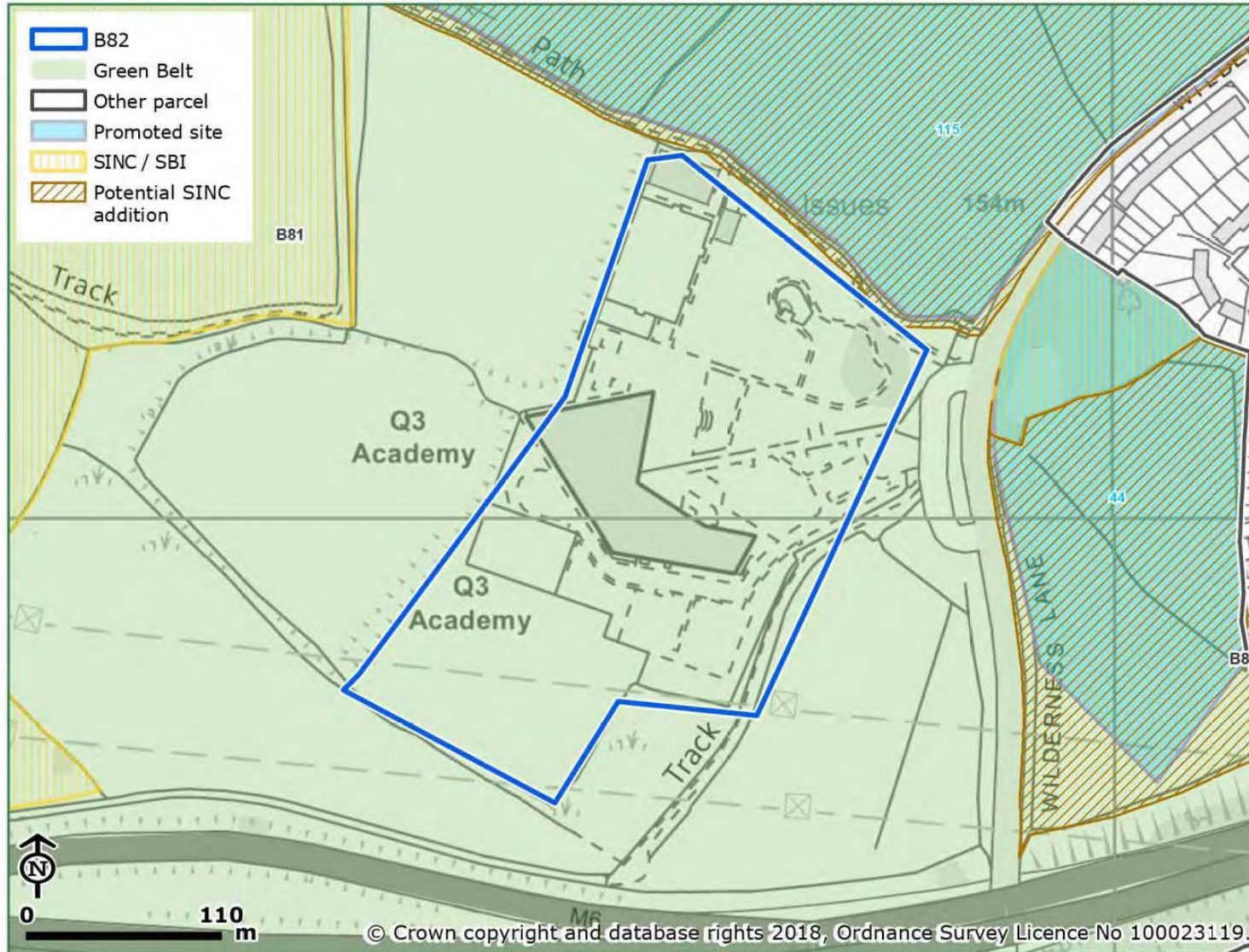
B80 Painswick Sub Station





B81 Wilderness Lane



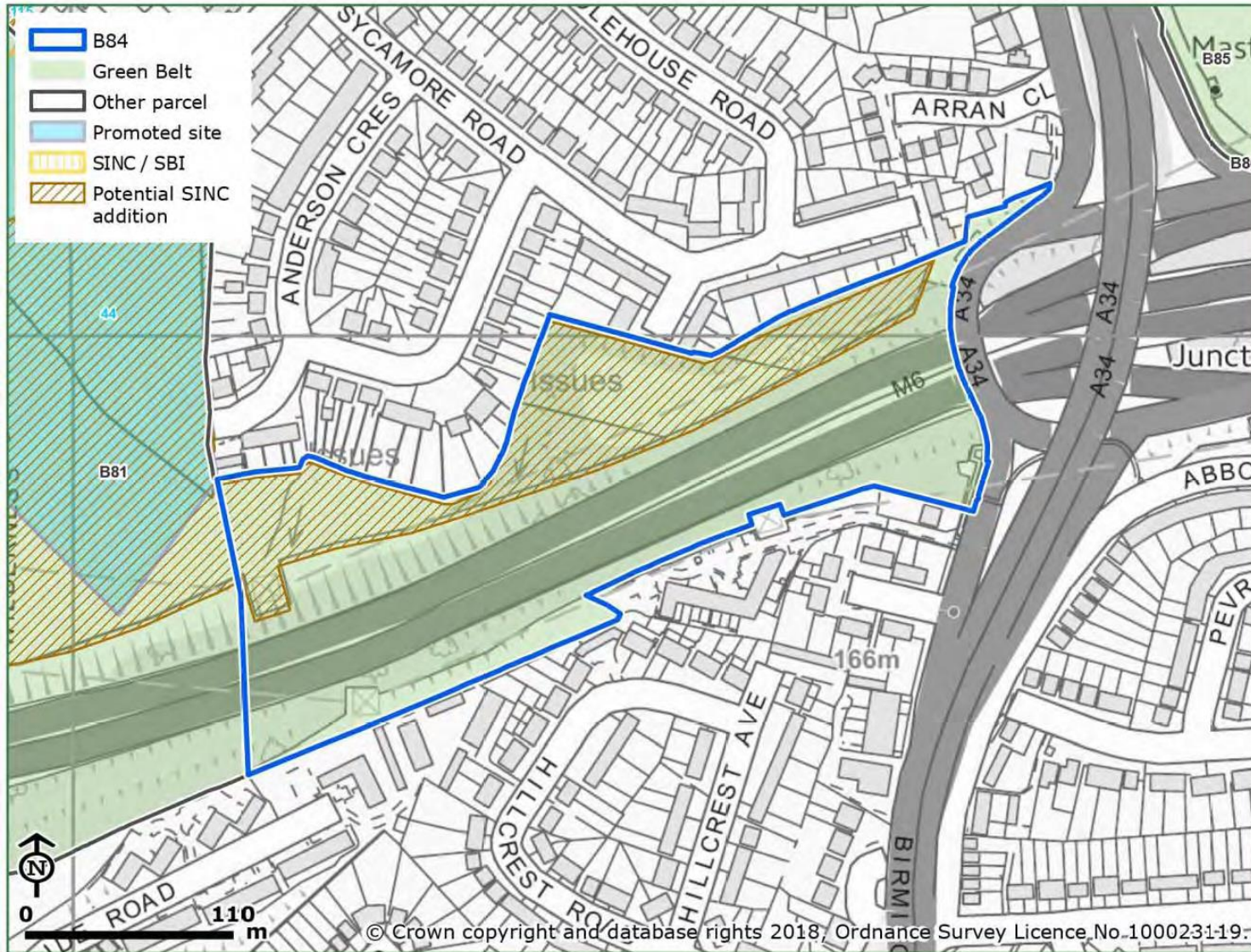


B82 Q3 Academy









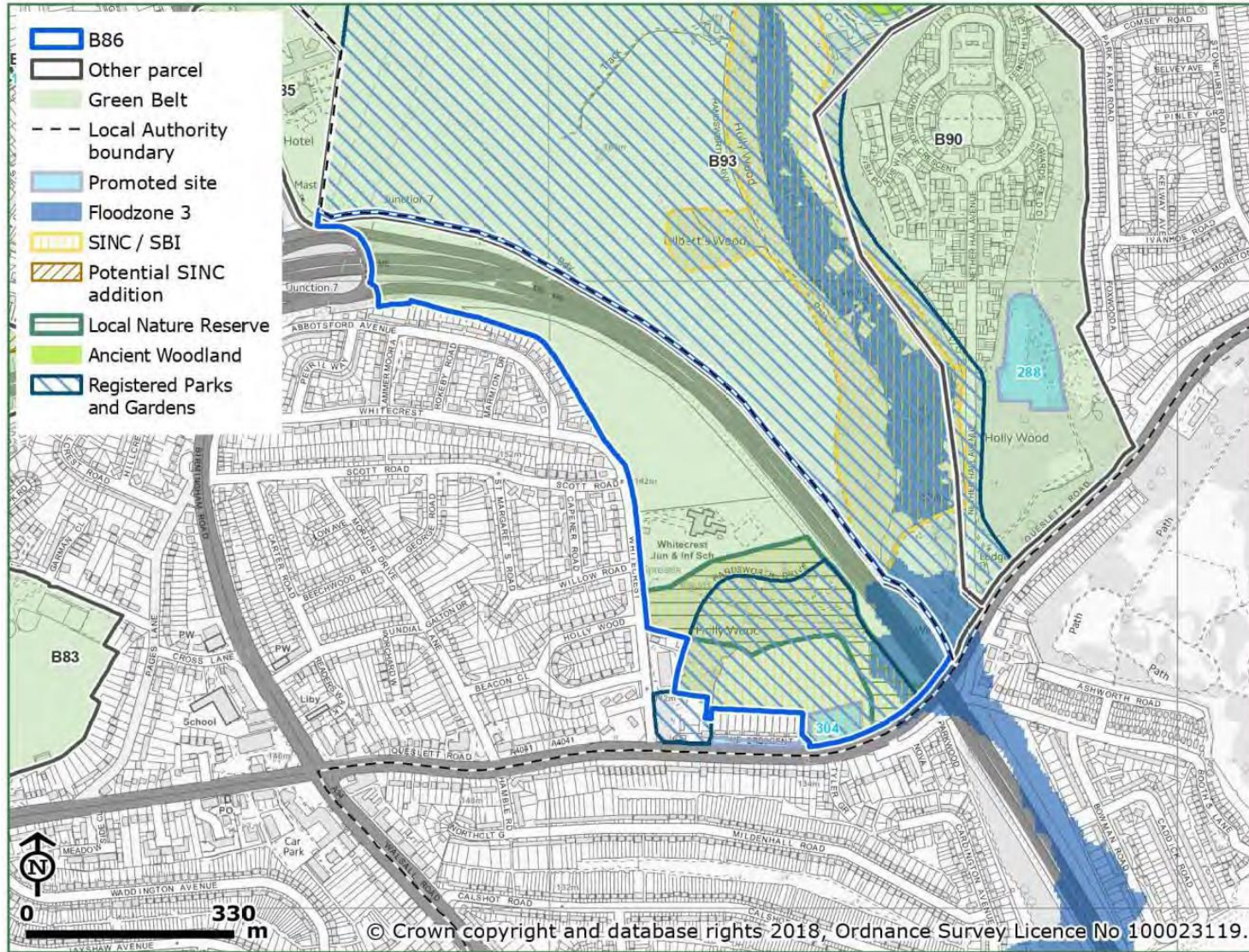
B84 M6 Junction 7





B85 Holiday Inn site





B86 Whitecrest Primary School