



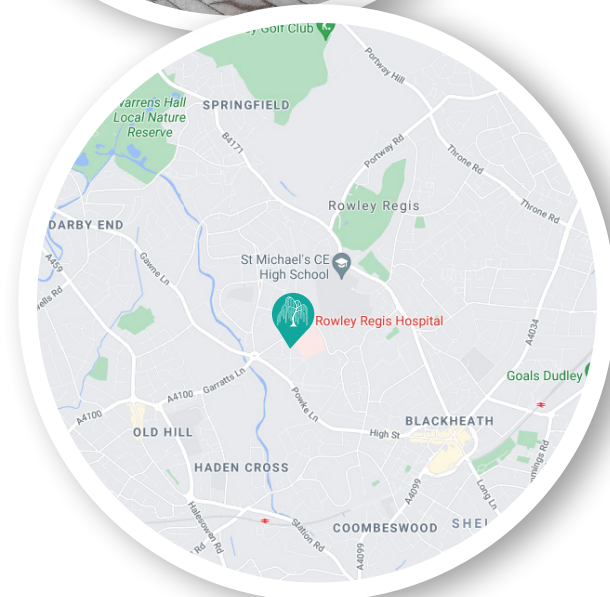
WILLOW GARDENS

When can people move in?



The first apartment
tenancies are anticipated
to be available from late
autumn / early winter 2021

Willow Gardens
Harvest Road
Rowley Regis
B65 8FG



HOW CAN I APPLY?

People can express interest online or
through Sandwell Enquiry.
Contact: 0121 569 2266
Email: sandwell_enquiry@sandwell.gov.uk

HOW MUCH WILL IT COST?

Rents for the property will be set at the current market value. There
will also be a range of service charges to cover general maintenance
costs and communal facility upkeep. These charges will be covered
by housing benefits where applicable.
In addition there will be a weekly well-being charge for all tenants.

To find out more visit:

www.sandwell.gov.uk/willowgardens
for more information about our new
extra care housing centre.

A housing development
scheme from



A new extra care housing scheme in
Rowley Regis from Sandwell Council.

“Better lives for older people”

To support individuals to lead
happy, fulfilling and independent
lives whilst feeling safe
and valued

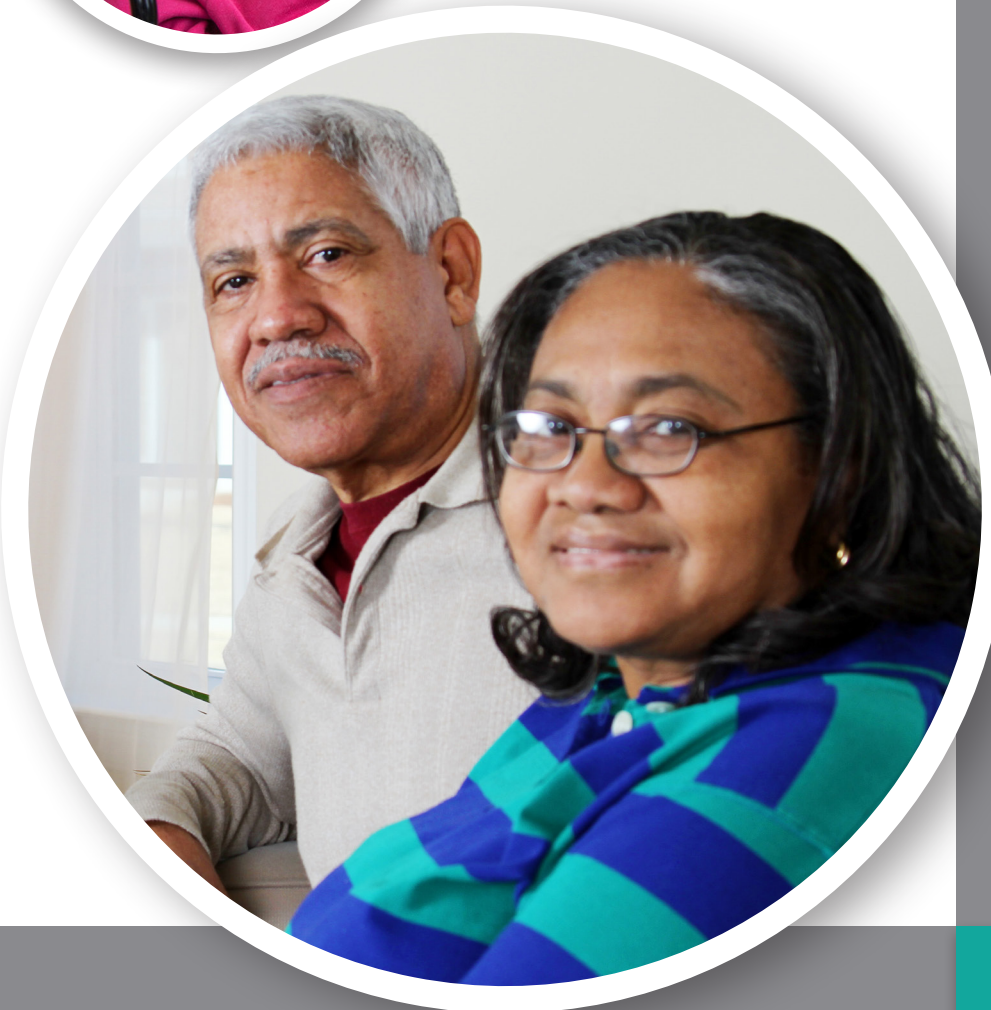
Welcome to



WILLOW GARDENS

Willow Gardens is a new extra care housing scheme being developed by Sandwell Council.

Our specialist built new scheme in Rowley Regis offers a mixture of one and two-bedroom apartments, with 24hr support onsite and care services available that are tailored to your needs.



WHAT IS IT LIKE AT WILLOW GARDENS?



- There are 90 apartments for rent, consisting of 23 with two bedrooms and 67 with one bedroom, including 5 which are fully wheelchair compliant.
- Each self-contained apartment has an intercom entry system and emergency pull cord alarm, fitted kitchen and bathroom.
- Our care team are on-site 24hrs to provide support based on individual needs and choice and there is lift access to all parts of the building.



Who can access the apartments?

Sandwell residents over the age of 55 who require care and support will be given priority when allocating apartments on the development.



WHAT DOES 'EXTRA CARE' MEAN AT WILLOW GARDENS?

A sociable community and a range of opportunities and facilities will also be available when you want to drop-in and use it - its the best of both worlds

“Better lives for older people”

To support individuals to lead happy, fulfilling and independent lives whilst feeling safe and valued